

TRAIL CAMERA

HC550G/HC550M



USER MANUAL



1080P full
hd

0.3s

Fast trigger
time

120°

Detection angle



Rugged
waterproof

PACKING INCLUDES



Camera



Manual



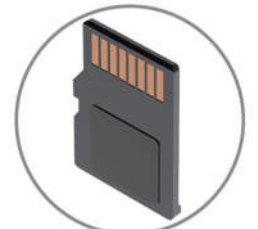
Mounting
Strap



Remote
Control



High gain
Antenna



Micro SD
card



USB Cable

SPECIFICATIONS

Cellular/Wireless

Frequency	2G(GSM) HC550M 3G(WCDMA) HC550G
-----------	------------------------------------

Photo recording

Photo resolution	16 MP
File format	JPG
Time lapse mode	5min/30min/60min
Multi-shot mode	Up to 9 photos per detection
Stamp (photos and video)	Date, time, temperature (°C/°F) and moon phase
Capture mode	Color by day, black and white by night

Video recording

Video resolution	1920 x 1080/30fps (FHD)
File format	AVI/H.264
Sequence length	Adjustable from 10 to 90 s
Capture mode	Color by day, black and white by night

Audio

Sound recording (automatically recorded in video mode)	N/A
---	-----

Memory storage

Support	•Internal memory: none •External memory : SD/SDHC card (up to 64 GB)
---------	---

Viewing

Built-in screen	TFT 2"
-----------------	--------

Power source

Alkaline or lithium batteries	8 x AA
Lithium battery pack	Rechargeable battery pack(LIT-550)
External (3.5X1.5mm Jack)	DC12V 1000mA ,(6V~12V)

Detection system

Motion sensor	Single PIR
Detection angle	120°
Detection range	Adjustable from 1 to 80 ft
Trigger speed	0.3 sec
Delay between each detection	Adjustable from Instant to 30 min

Night time illumination system

LEDs	24 LEDs
Flash range	< 90 ft
Exposure	Automatic infrared level adjustment

Optical field of view

120°

Dimensions

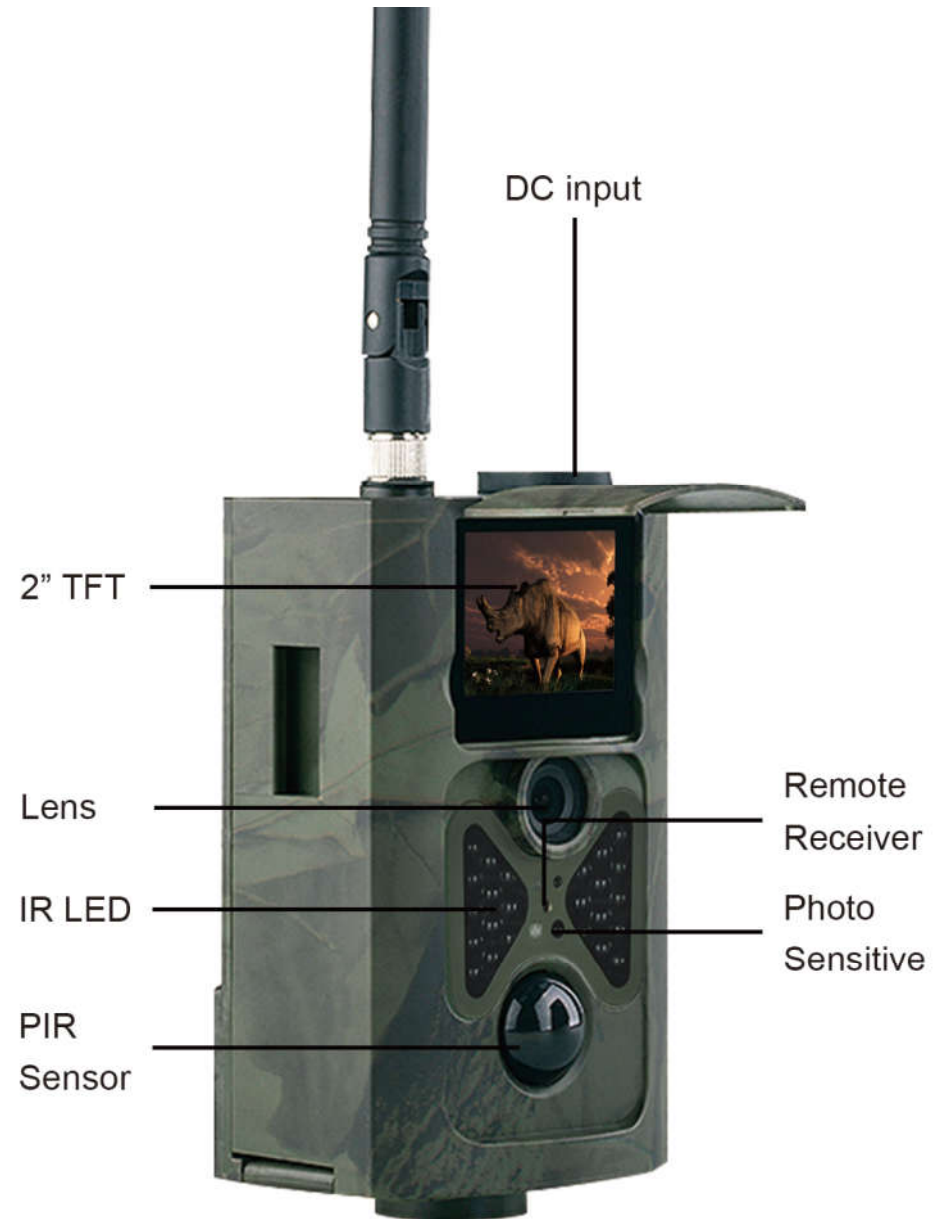
145mm X 80mm X 55 mm

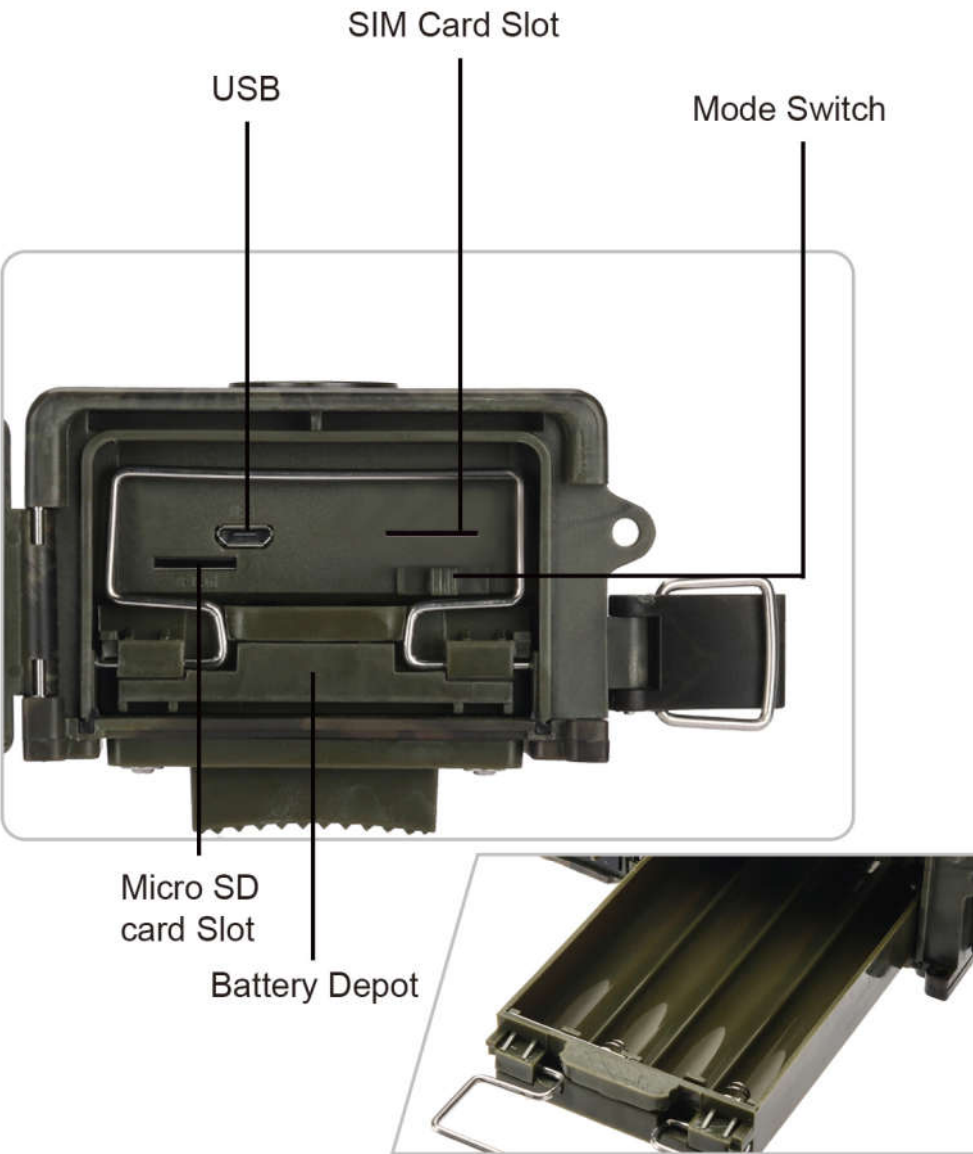
Recommendations

Operating temperature	(-30 °C to + 50 °C) (-22 °F to +122 °F)
Storage temperature	(-40 °C to + 60 °C) (-40 °F to +140 °F)

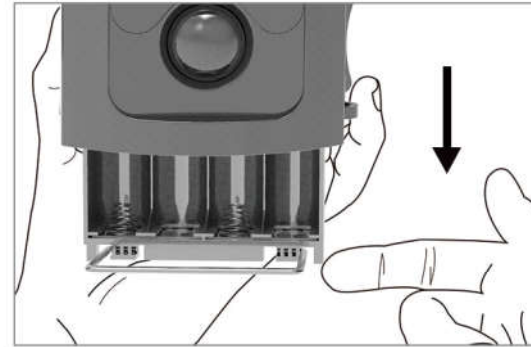
THE SIZE LIST FOR TRANSMITTING TYPE

Version / Function	4G	3G	2G
MMS	<100KB(Default), Options:200KB/100KB/50KB (depend on the limit of the local operator)		
SMTP	<40MB (Picture and Video)	<1MB (Picture only)	Same with MMS
FTP	<40MB (Picture and Video)	Not support (need to be customized)	Not support (need to be customized)
SIM	Support		
Live Show	Under development (Only in 4G camera)		





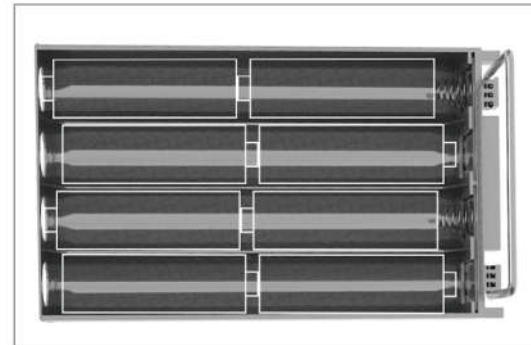
INSTALLING BATTERIES



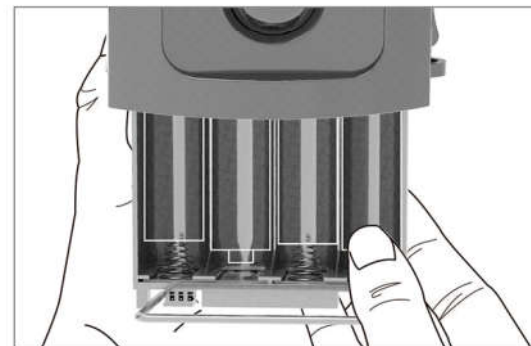
IF USING AA - ALKALINE BATTERIES

1. Pull the iron ring to draw out the internal AA battery box.

2. Insert the AA batteries accordingly as indicated by the positive and negative battery icons



3. Slide the battery compartment back into the camera housing until it is completely engaged in the slot in the bottom of the housing

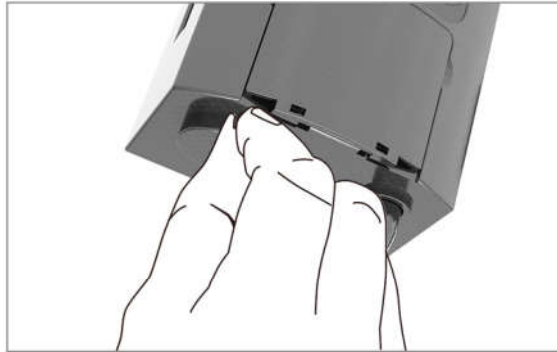


NOTE: Installing any of the 8-AA batteries in the wrong direction may cause the batteries to leak acid and could possibly explode, causing camera failure and damage to the battery compartment.

BATTERIES CONT.....

IF USING 12V DC POWER SOURCE

1. Remove the rubber port cap at the bottom of the camera .



2. Using a universal 12V DC cord, plug in to the bottom port option.



3. When not in use, replace the rubber port cap at the bottom of the camera to protect the 12V DC universal plug-in port.

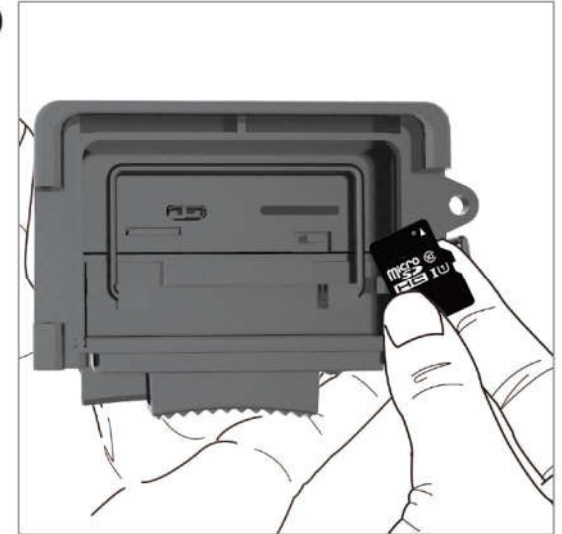


08

MEMORY CARD INSTALL

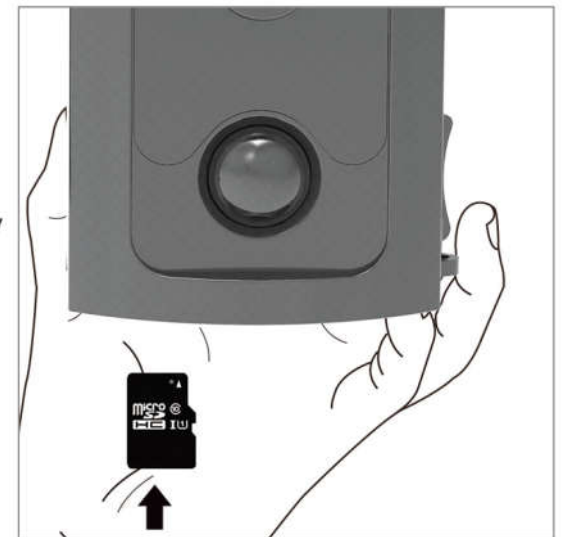
INSTALL MICRO-SD CARD

1. Insert the Micro SD card (Max 64 GB) with the contacts facing away. The Micro SD card should slide in freely with little resistance. Continue pressing the card inward until you hear a click. This means the Micro SD card is locked in place and ready for use.



2. To remove Micro SD card, press the card inwards to release.

Caution: we recommend class6 & above high speed memory card, cheap memory card may damage the pictures and videos



09

QUICK START

Enter to TEST mode

Slide the mode switch from OFF to TEST position to activate the camera and view the user setup screen.




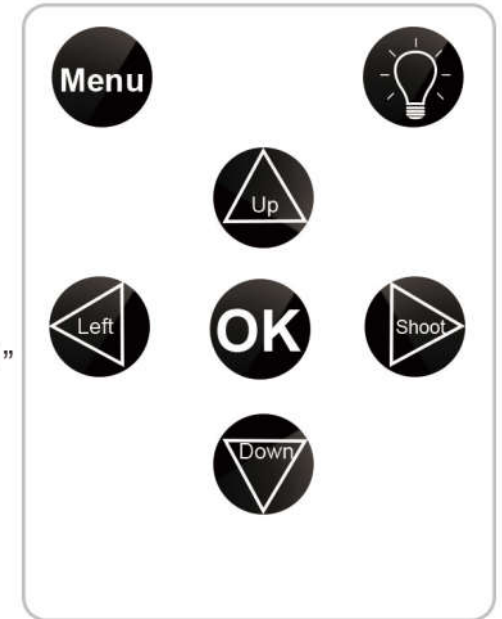
A SIM card is needed. Make sure your SIM card supports Short Messaging Service (SMS), Multimedia Messaging Service (MMS) and data traffic service. When SIM card recognized by camera, the camera display will show carrier's icon.

There is a control panel with 8 keys when you open the camera.

REMOTE CONTROL

The infrared remoter is an input device of the camera and primarily used for customer settings. Its maximum remote distance is 9 meters.


Note: Press the key “” for laser light.



Note (Under TEST mode)

- Press **Shoot** directly, the camera will take picture or video directly.
- Press **OK** directly, the captured picture or video can be viewed.
- Viewing picture, press **Up** or **Down**.
- Viewing video, press **Left** to start, again to stop, press **OK** to return.
- Press **Left** directly to get the IMEI (in the TEST interface).

The best position to place the camera could be found through this TEST mode. Generally, it is recommended to place the camera at the height of 3 to 6 feet (1 to 2 meters) to the ground.

Press  directly to get the IMEI (in the TEST mode).

Enter to ON Mode

After you complete all the setting, slide power switch to ON to enter to auto working mode. The motion indicator will flash red for about 5 seconds and the camera starts working after that. It will immediately take pictures or record videos when person or animal enters into the area of the PIR sensor.

- **Cautions:** To avoid potential false triggers due to temperature and motion disturbances, please do not aim the camera at a heat source (e.g.: the sun, heated stone or metal) or nearby tree branches and twigs. The ideal direction to aim at is the north and the open place without heat source. Also, remove any twigs close to the front of the camera.

Advanced Setting

Menu list

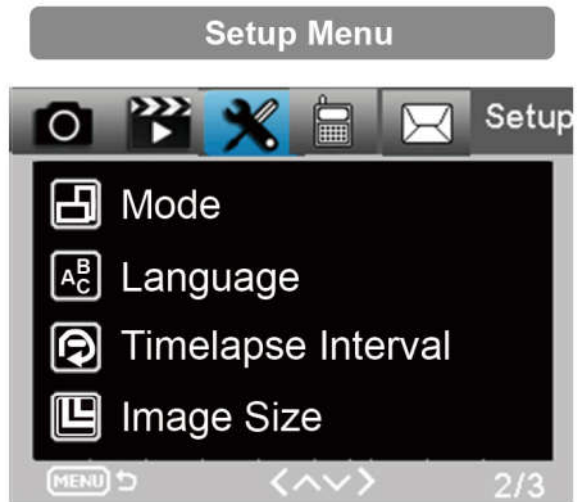




Camera	Sub menu	Description
Resolution	16MP, 12MP, 8MP	Photo Size
Sequence	1/3/6/9	Number of photos taken every time
ISO	Auto, 100, 200, 400	The camera exposure level
Delay	1/5/10/30 sec/min	Waiting time from the last taking
Camera ID	0-0-0 0-0-0	Camera ID



Video	Sub menu	Description
Resolution	1080P, 720P, WVGA, VGA	Video size
Video Length	10S, 30S, 60S, 90S	The time length of video
Record Audio	On, Off	If On, Video sound is recorded



Setup	Sub menu	Description
Mode	Camera, video, camera& video, Timelapse	Taking picture, video, picture and video, taking picture regular
Language	English, Francais, Deutsch and so on	Camera Menu language
Timelapse interval	5/30/60 Min	Taking picture or video every 5/30/60 minutes constantly
Image Size	Small/Normal/Big	Size for transmitting picture Small <100KB Normal <150KB Big <200KB
TV Mode	NTSC, PAL	TV play mode

Setup	Sub menu	Description
Date/Time	2018-09-03 16:37:25	Year-Month-Date Hour: Minute:Second
Timer	ON, OFF	If On, the camera only works in the period
Password	****	4 digital numbers(1314 Universal password)
Format	SD Card	All files of memory card will be deleted
Default Setting	return menu setting to defaults	Cancel/OK
Version	03/09/2018 16:37:25	Camera version



MMS	Sub menu	Description
MMS ON/OFF	Off/On	MMS Off/On
Country	Set in MMSCONFIG	Operator name
MMS Phone	Set in MMSCONFIG	Receiver's phone of mms
MMS E-mail	Set in MMSCONFIG	Receiver's mail of mms



SMTP	Sub menu	Description
SMTP ON/OFF	Off/On	SMTP Off/On
Country	Set in MMSCONFIG	Operator name
SMTP E-mail	Set in MMSCONFIG	Receiver's mail of picture

MMSCONFIG SETTING

► Load CD into the computer

► Click the MMSCONFIG.exe file from MMSCONFIG folder



► Fix Camera, Video and System Menu Setting (the second way to set the menu)

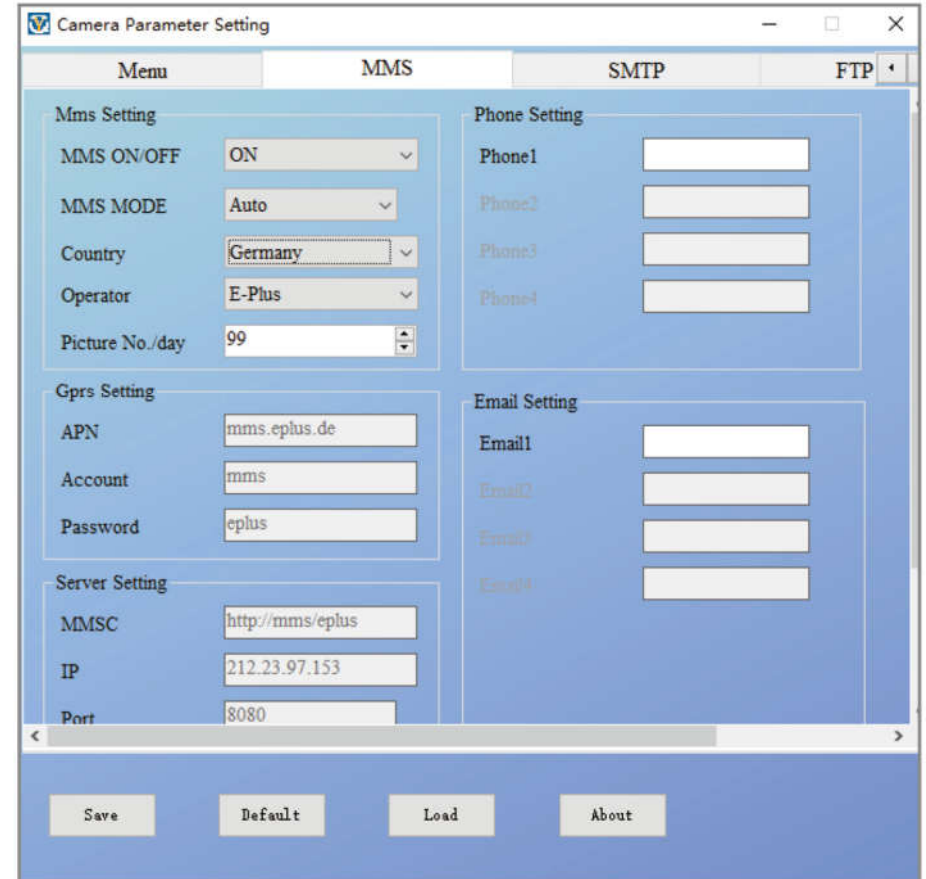
Note: If you have done the menu setting by remoter in TEST mode, you can skip.

► Fix MMS Setting

Auto MMS Mode:

In Auto MMS Mode, there is configured information for selection

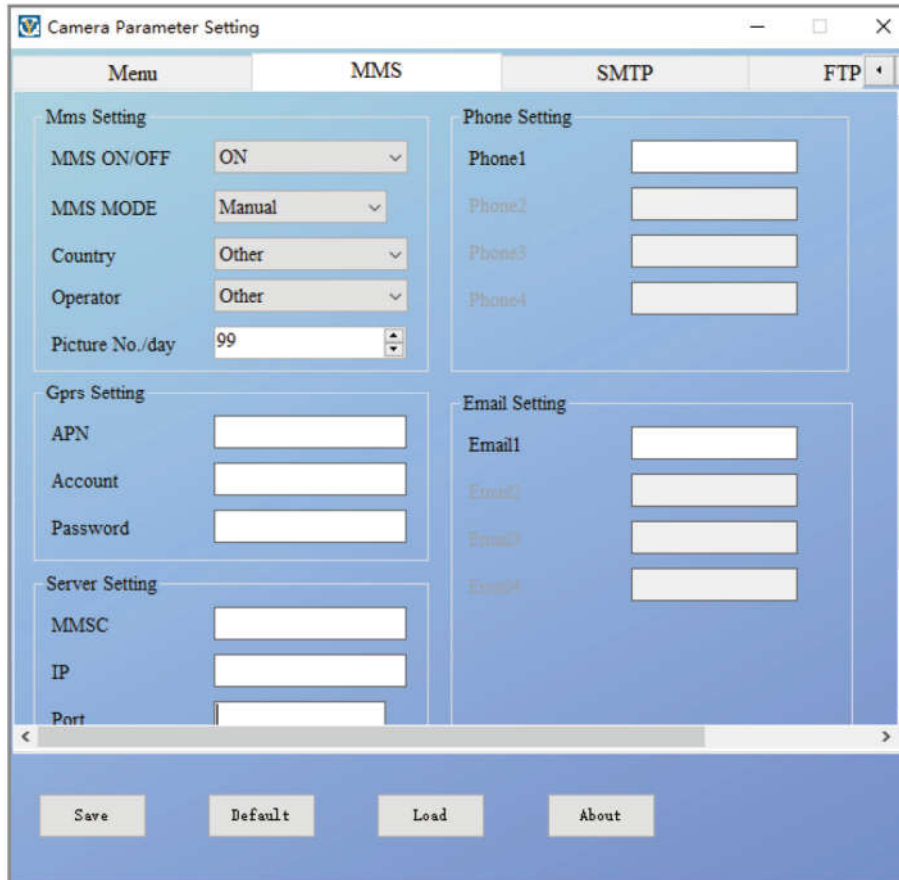
- a. Choose Country
- b. Choose Operator
- c. Fill in the phone number in the right-side blank column as receiver
- d. Fill in the email address for photos receiving



Manual MMS Mode:

If there is no configured information for selection, please choose Manual MMS Mode.

Firstly, User need to choose manual and contact SIM card carrier to get and fill in the APN, Account, Password, MMSC, IP and Port information. Secondly, fill in receiver phone number or E-mail address at right side.



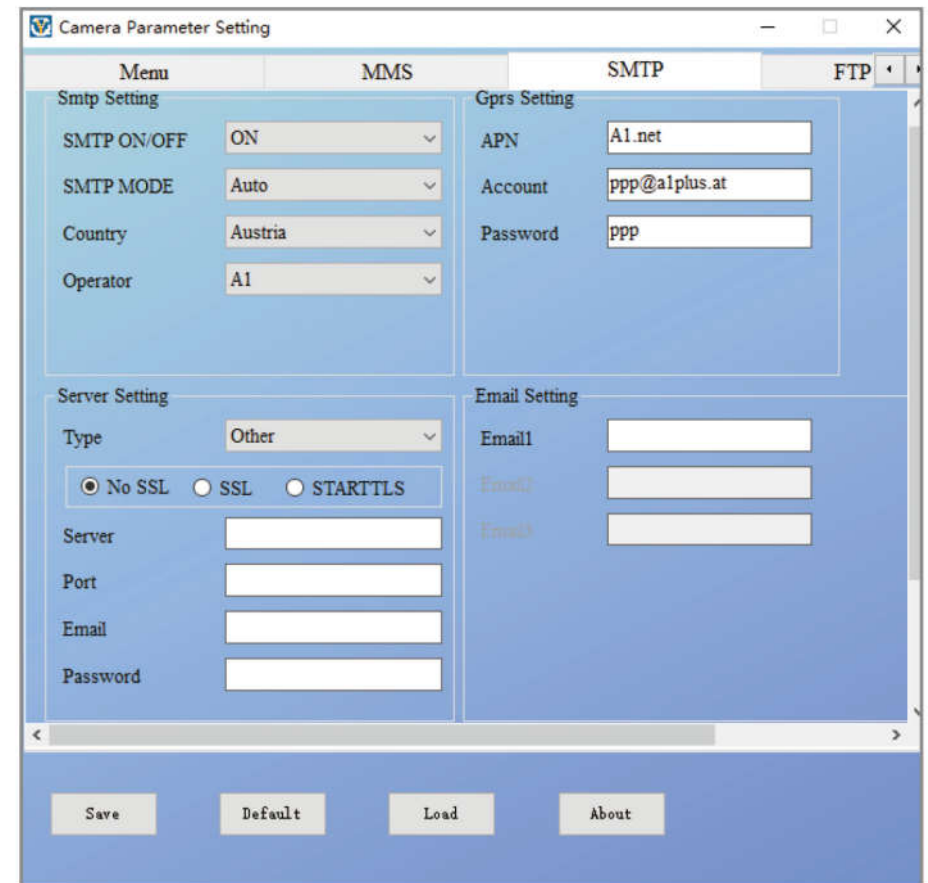
Fix SMTP Setting

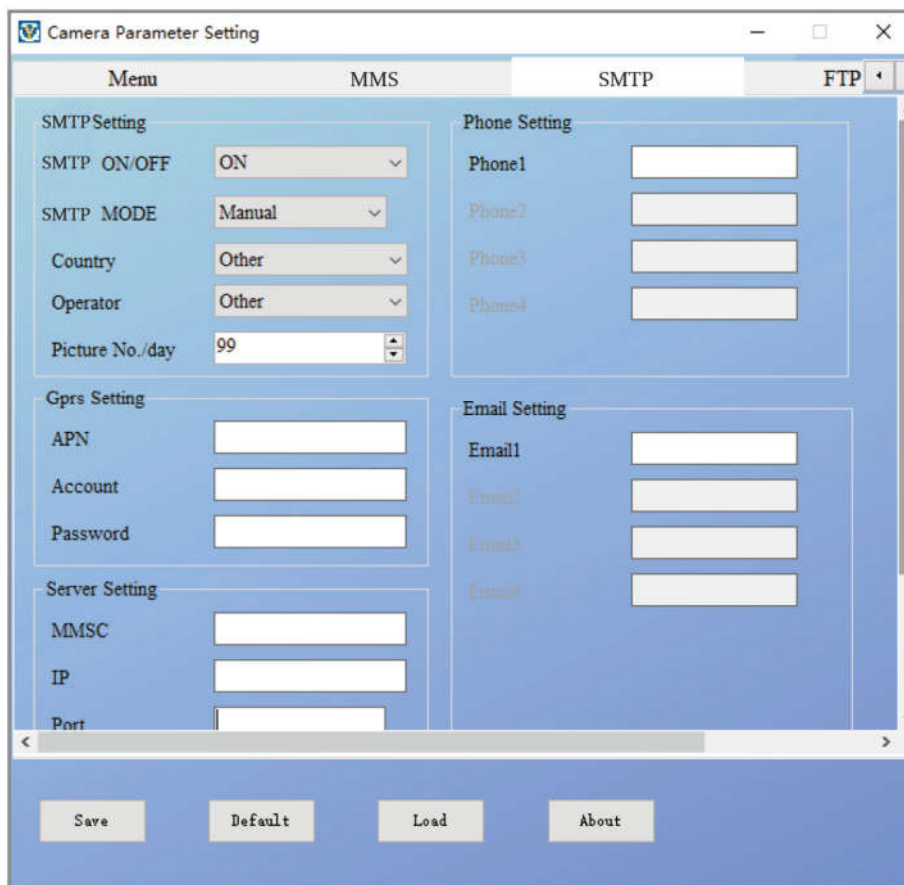
This way of sending pictures is also called data transmission. It's highly popular now, the picture is sent from email to email, only charging the data cost.

Auto SMTP Mode:

In Auto SMTP Mode, there is configured information for selection

- a. Choose Country
- b. Choose Operator
- c. Choose Type of email
- d. Add sending email address on the left
- e. Add sending email address password on the left
- f. Add receiving email address on the right





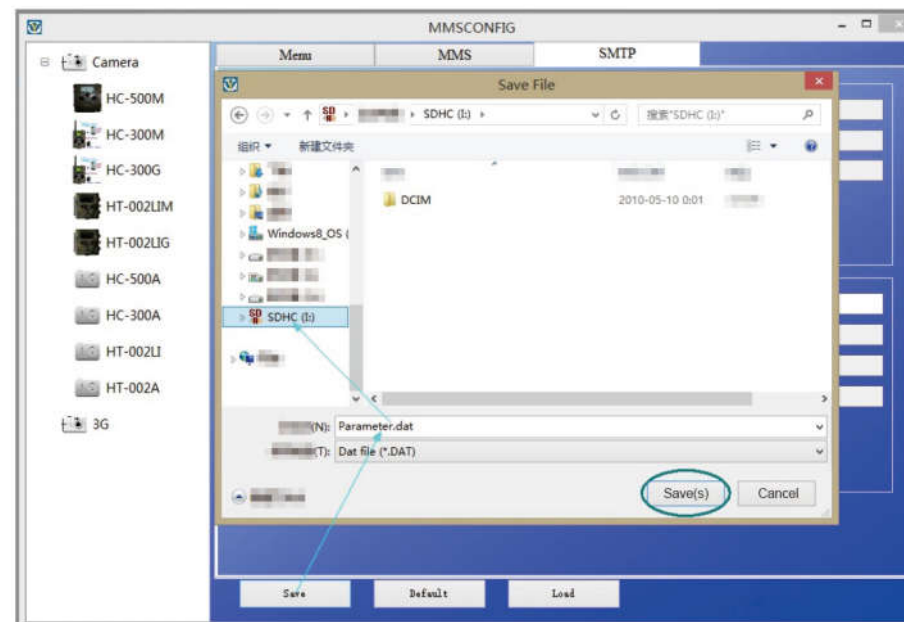
Manual SMTP Mode:

If there is no configured information for selection, please choose Manual SMTP Mode.

Firstly, User need to contact SIM card carrier to get APN, Account, Password information and fill in; contact sending email provider to get server, port information.

- a. Add sending email address on the left
- b. Add sending email address password on the left
- c. Add receiving email address on the right

Save the file “Parameter. dat” to Micro SD card



SMS COMMAND CODE

This camera support SMS remote control, control camera by sending SMS code below.

The SMS codes are:

code	Function	Meaning
530	Camera Start	Start Working
531	Camera Sleep	Stop Working
500	Capture	Camera takes a picture, then sends it to related phone or email(record on MMS,SMTP site)
505	Capture and get pic (MMS mode)	Camera take a picture, then sends it to current phone
520	Get Pic information	Camera send a a text with picture number, SD card capacity, battery lever.

TROUBLE SHOOTING

Camera Doesn't Capture Subject of Interest

- Check the PIR sensitivity. For warm environmental conditions, set the Sensor Level to “Low” and for cold weather use, set the sensor for “High”.
- Try to set your camera up in an area where no heat resources are in the camera's field of view.
- In some cases, set the camera near to water will make the camera take images with no subject in them.
- Try to aim the camera over ground.
- Try to set camera on stable and immovable objects, i.e.: large trees.
- At night, motion detector may detect beyond range of the IR illumination, reduce distance setting by adjusting sensor sensitivity.
- Rising sun or sunset can trigger sensor. Camera should be reoriented.

- If person/animal moves quickly, it may move out of the camera's field of view before photo is taken. Move camera further back or redirect camera.

Camera Stop Taking Images

- Please make sure that the memory card has enough memory storage. If the card is full, camera will stop taking images.
- Check batteries to make sure that alkaline, NIMH or lithium AA batteries left power is enough for camera to work
- Make sure that the camera power switch is at the "On" position and not at the "Off" or "Test" modes.
- When MMS/SMTP function is on, there will be around 1minute interval for camera to send out photo before camera take the next photo.
- Please format the memory card when you first time to use it or change to use another memory card

Night Vision Flash Range Doesn't Meet Expectation

- make sure that batteries are fully charged or left power is enough.
- High-quality 1.5V NIMH or Lithium rechargeable AA batteries can offer much better Infra flash range than alkaline batteries.
- To ensure accuracy and quality of night image, please try to mount camera on dark environment without obvious light sources.
- To ensure accuracy and quality of night time image, please mount camera to dark environment without any obvious light sources;
- Certain surroundings (like trees, walls, ground, etc.) within flash range can get you better night time images; please do not aim camera to total open field where there is nothing within IR flash range to reflect flash back, it's like shinning a flashlight into sky in night, you just can't see anything, same does camera.

Camera Take Images but won't send them to mobile phone /E-mail

- If you choose manual mode, the info you fill in may have a problem, Contact SIM card carrier to confirm all the info such as Apn, server, port is correct.
- When you turn on MMS function, it doesn't need to add international phone zone number before the phone number, just fill in your mobile phone number.
- When you turn on SMTP function, please make sure that your email's server and port is correct, some email server will reject email as SPAM, you can try to find your email at SPAM box or contact seller to get test email and have a try.
- Don't rename parameter.dat, you can check your phone number or E-mail by camera menu, please save parameter.dat at the boot of memory card, otherwise camera can't recognize the parameter.dat

WARRANTY

With great pride and full confidence in products, we always keep our words which are given to our customers as specified warranty terms and services below. Based on a strict QC system, we initially offer all our customers one-year long time limited warranty.

Our products are warranted against defects in materials and workmanship for a period of one year from the date of original purchase. If a defect exists, we will, at our option and to extent permitted by law will

- (1) repair the product at no charge using new or refurbished parts;
- (2) exchange the product with a functionally equivalent product that is new or refurbished.

This warranty excludes damage from abuse, accident, modifications or others that are not defects in materials and workmanship. This warranty only covers failures due to defects in materials or workmanship under normal usage. To obtain warranty service, please contact us to determine the nature of problem before return the product under this warranty (with a written description of the problem and print samples) for repairing or exchanging.