

# TRAIL CAMERA

HC700G/HC700M



## USER MANUAL



1080P full  
hd

**0.3s**

Fast trigger  
time

**90°**

Detection angle



Rugged  
waterproof

## PACKING INCLUDES



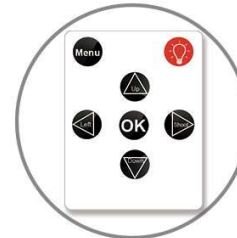
▲  
Camera



▲  
Manual



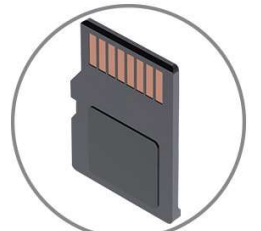
▲  
Mounting  
Strap



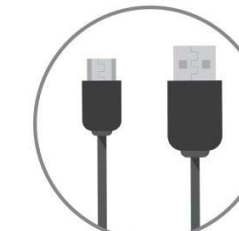
▲  
Remote  
Control



▲  
High gain  
Antenna



▲  
Micro SD  
card



▲  
USB Cable

# SPECIFICATIONS

## Cellular/Wireless

Frequency	2G(GSM) HC700M 3G(WCDMA) HC700G
-----------	------------------------------------

## Photo recording

Photo resolution	16 MP
File format	JPG
Time lapse mode	5min/30min/60min
Multi-shot mode	Up to 9 photos per detection
Stamp ( <b>photos and video</b> )	Date, time, temperature (°C/°F) and moon phase
Capture mode	Color by day, black and white by night

## Video recording

Video resolution	1920 x 1080/30fps (FHD)
File format	AVI/H.264
Sequence length	Adjustable from 10 to 90 s
Capture mode	Color by day, black and white by night

## Audio

Sound recording (automatically recorded in video mode)	N/A
---	-----

## Memory storage

Support	•Internal memory: none •External memory : SD/SDHC card (up to 64 GB)
---------	---

02

## Viewing

Built-in screen	TFT 2"
-----------------	--------

## Power source

Alkaline or lithium batteries	6 x AA
Lithium battery pack	Rechargeable battery pack(LIT-700)
External (3.5X1.5mm Jack)	DC12V 1000mA ,(6V~12V)

## Detection system

Motion sensor	Single PIR
Detection angle	90°
Detection range	Adjustable from 1 to 80 ft
Trigger speed	0.3 sec
Delay between each detection	Adjustable from Instant to 30 min

## Night time illumination system

LEDs	48 LEDs
Flash range	< 90 ft
Exposure	Automatic infrared level adjustment

## Optical field of view

90°

## Dimensions

175mm X 80mm X 40 mm

## Recommendations

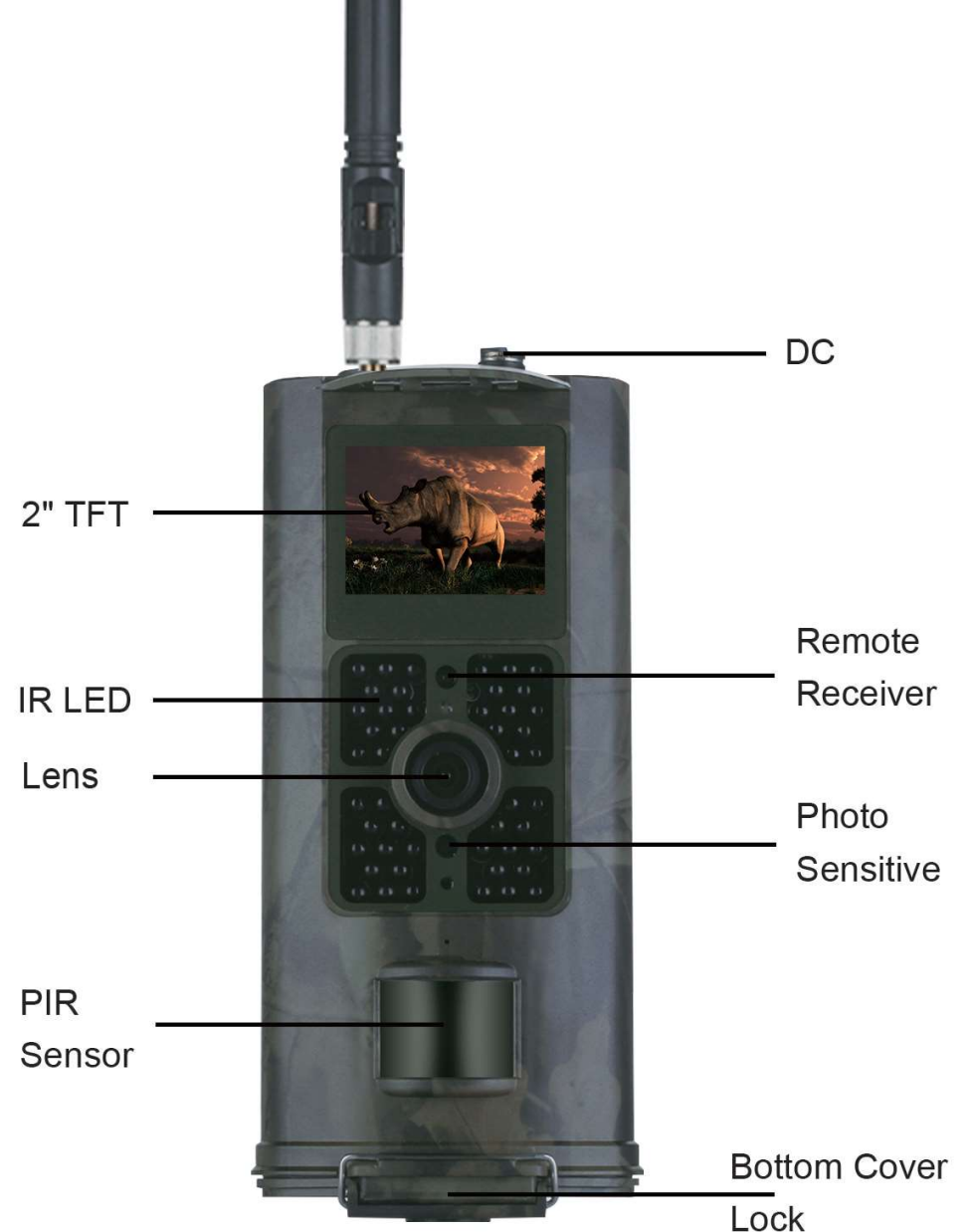
Operating temperature	(-30 °C to + 50 °C) (-22 °F to +122 °F)
Storage temperature	(-40 °C to + 60 °C) (-40 °F to +140 °F)

03

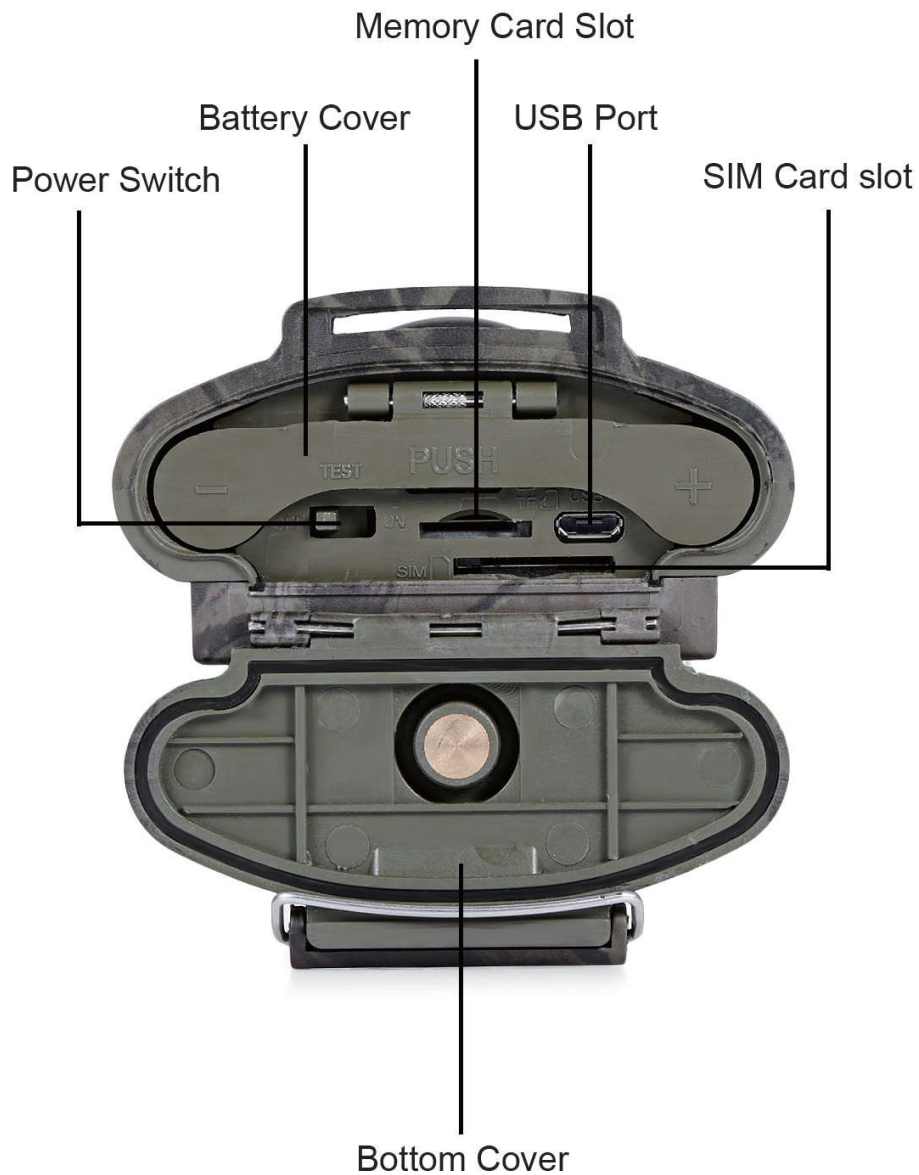
# THE SIZE LIST FOR TRANSMITTING TYPE

Version Function	4G	3G	2G
<b>MMS</b>	<100KB(Default), Options:200KB/100KB/50KB (depend on the limit of the local operator)		
<b>SMTP</b>	<40MB (Picture and Video)	<1MB (Picture only)	Same with MMS
<b>FTP</b>	<40MB (Picture and Video)	Not support (need to be customized)	Not support (need to be customized)
<b>SIM</b>	<b>Support</b>		
<b>Live Show</b>	Under development (Only in 4G camera)		

04

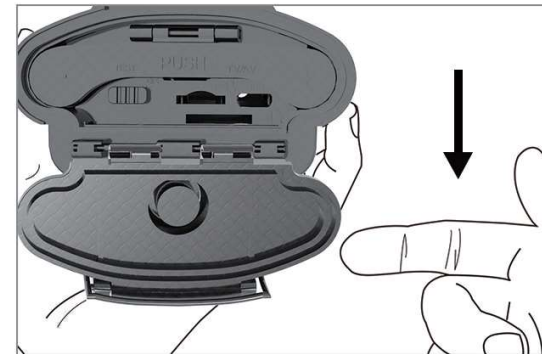


05



06

# INSTALLING BATTERIES



## IF USING AA - ALKALINE BATTERIES

1. Push battery cover to open the battery compartment.



2. Insert the AA batteries accordingly as indicated by the positive and negative battery icons on the battery cover

3. Push the battery cover again to close battery compartment



NOTE: Installing any of the 6-AA batteries in the wrong direction may cause the batteries to leak acid and could possibly explode, causing camera failure and damage to the battery compartment.

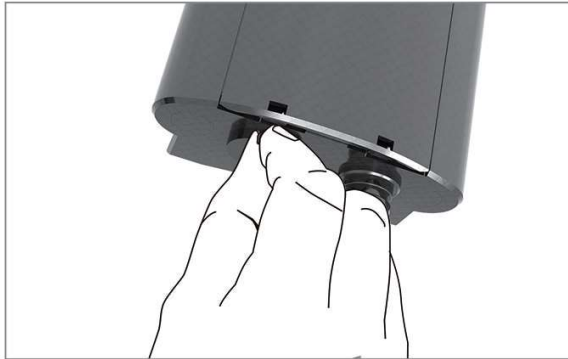
07



# BATTERIES CONT.....

## IF USING 12V DC POWER SOURCE

1. Remove the rubber port cap at the bottom of the camera .



2. Using a universal 12V DC cord, plug in to the bottom port option.



3. When not in use, replace the rubber port cap at the bottom of the camera to protect the 12V DC universal plug-in port.

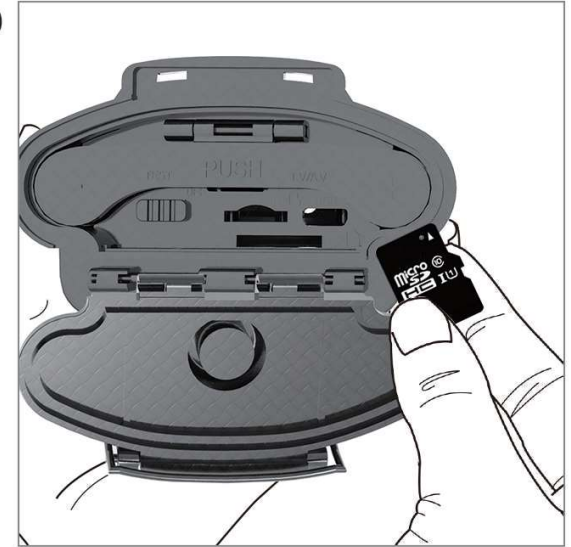


08

# MEMORY CARD INSTALL

## INSTALL MICRO-SD CARD

1. Insert the Micro SD card (Max 64 GB) with the contacts facing away. The Micro SD card should slide in freely with little resistance. Continue pressing the card inward until you hear a click. This means the Micro SD card is locked in place and ready for use.



2. To remove Micro SD card, press the card inwards to release.

Caution: we recommend class6 & above high speed memory card, cheap memory card may damage the pictures and videos



09

# QUICK START

## Enter to TEST mode

Slide the mode switch from OFF to TEST position to activate the camera and view the user setup screen.




A SIM card is needed. Make sure your SIM card supports Short Messaging Service (SMS), Multimedia Messaging Service (MMS) and data traffic service.

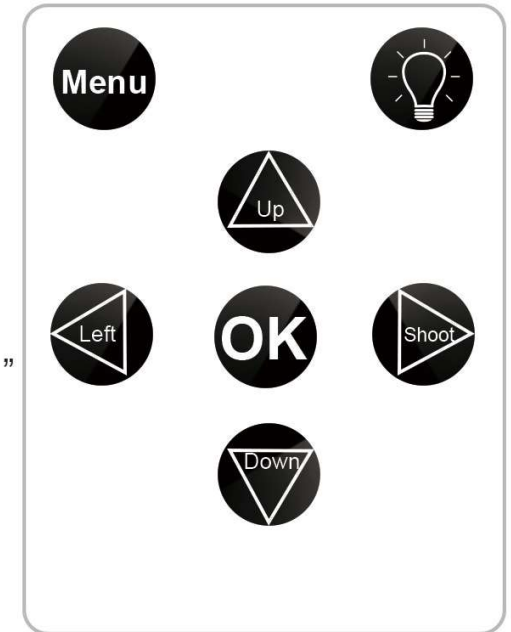
When SIM card recognized by camera, the camera display will show carrier's icon.

There is a control panel with 8 keys when you open the camera.

# REMOTE CONTROL

The infrared remoter is an input device of the camera and primarily used for customer settings. Its maximum remote distance is 9 meters.


**Note:** Press the key “” for laser light.



## Note (Under TEST mode)

- Press **Shoot** directly, the camera will take picture or video directly.
- Press **OK** directly, the captured picture or video can be viewed.
- Viewing picture, press **Up** or **Down**.
- Viewing video, press **Left** to start, again to stop, press **OK** to return.
- Press **Left** directly to get the IMEI (in the TEST interface).

The best position to place the camera could be found through this TEST mode. Generally, it is recommended to place the camera at the height of 3 to 6 feet (1 to 2 meters) to the ground.

Press  directly to get the IMEI (in the TEST mode).

## Enter to ON Mode

After you complete all the setting, slide power switch to ON to enter to auto working mode. The motion indicator will flash red for about 5 seconds and the camera starts working after that. It will immediately take pictures or record videos when person or animal enters into the area of the PIR sensor.

- **Cautions:** To avoid potential false triggers due to temperature and motion disturbances, please do not aim the camera at a heat source (e.g.: the sun, heated stone or metal) or nearby tree branches and twigs. The ideal direction to aim at is the north and the open place without heat source. Also, remove any twigs close to the front of the camera.

# Advanced Setting

## Menu list



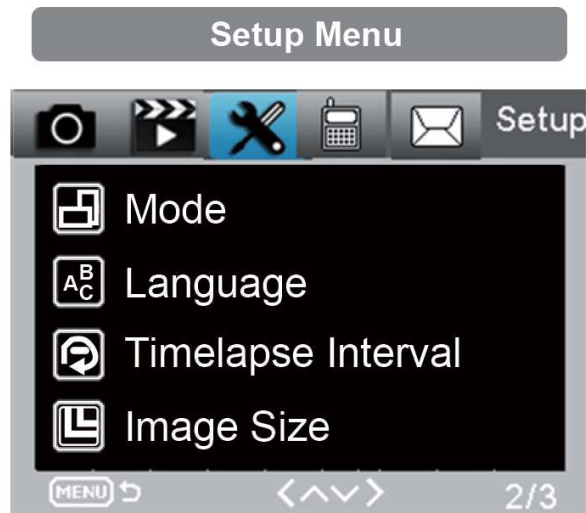


Camera	Sub menu	Description
<b>Resolution</b>	16MP, 12MP, 8MP	Photo Size
<b>Sequence</b>	1/3/6/9	Number of photos taken every time
<b>ISO</b>	Auto, 100, 200, 400	The camera exposure level
<b>Delay</b>	1/5/10/30 sec/min	Waiting time from the last taking
<b>Camera ID</b>	0-0-0 0-0-0	Camera ID



Video	Sub menu	Description
<b>Resolution</b>	1080P, 720P, WVGA, VGA	Video size
<b>Video Length</b>	10S, 30S, 60S, 90S	The time length of video
<b>Record Audio</b>	On, Off	If On, Video sound is recorded





Setup	Sub menu	Description
<b>Mode</b>	Camera, video, camera& video, Timelapse	Taking picture, video, picture and video, taking picture regular
<b>Language</b>	English, Francais, Deutsch and so on	Camera Menu language
<b>Timelapse interval</b>	5/30/60 Min	Taking picture or video every 5/30/60 minutes constantly
<b>Image Size</b>	Small/Normal/Big	Size for transmitting picture Small <100KB Normal <150KB Big <200KB
<b>TV Mode</b>	NTSC, PAL	TV play mode

Setup	Sub menu	Description
<b>Motion detection</b>	High/Medium/Low	Change PIR sensitive to Hight, Medium or Low
<b>Date/Time</b>	2018-09-03 16:37:25	Year-Month-Date Hour: Minute:Second
<b>Timer</b>	ON, OFF	If On, the camera only works in the period
<b>Password</b>	****	4 digital numbers(1314 Universal password)
<b>Format</b>	SD Card	All files of memory card will be deleted
<b>Default Setting</b>	return menu setting to defaults	Cancel/OK
<b>Version</b>	03/09/2018 16:37:25	Camera version



MMS	Sub menu	Description
<b>MMS ON/OFF</b>	Off/On	MMS Off/On
<b>Country</b>	Set in MMSCONFIG	Operator name
<b>MMS Phone</b>	Set in MMSCONFIG	Receiver's phone of mms
<b>MMS E-mail</b>	Set in MMSCONFIG	Receiver's mail of mms



SMTP	Sub menu	Description
<b>SMTP ON/OFF</b>	Off/On	SMTP Off/On
<b>Country</b>	Set in MMSCONFIG	Operator name
<b>SMTP E-mail</b>	Set in MMSCONFIG	Receiver's mail of picture

# MMSCONFIG SETTING

► Load CD into the computer

► Click the MMSCONFIG.exe file from MMSCONFIG folder



► Fix Camera, Video and System Menu Setting (the second way to set the menu)

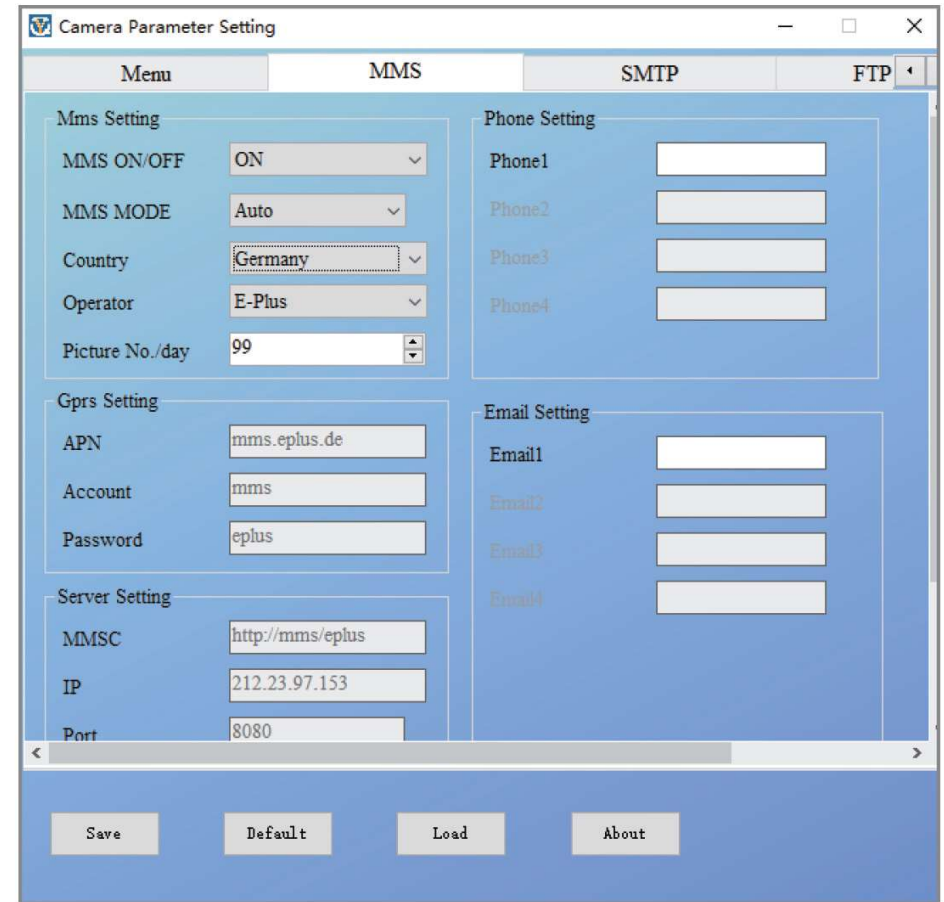
Note: If you have done the menu setting by remoter in TEST mode, you can skip.

► Fix MMS Setting

## Auto MMS Mode:

In Auto MMS Mode, there is configured information for selection

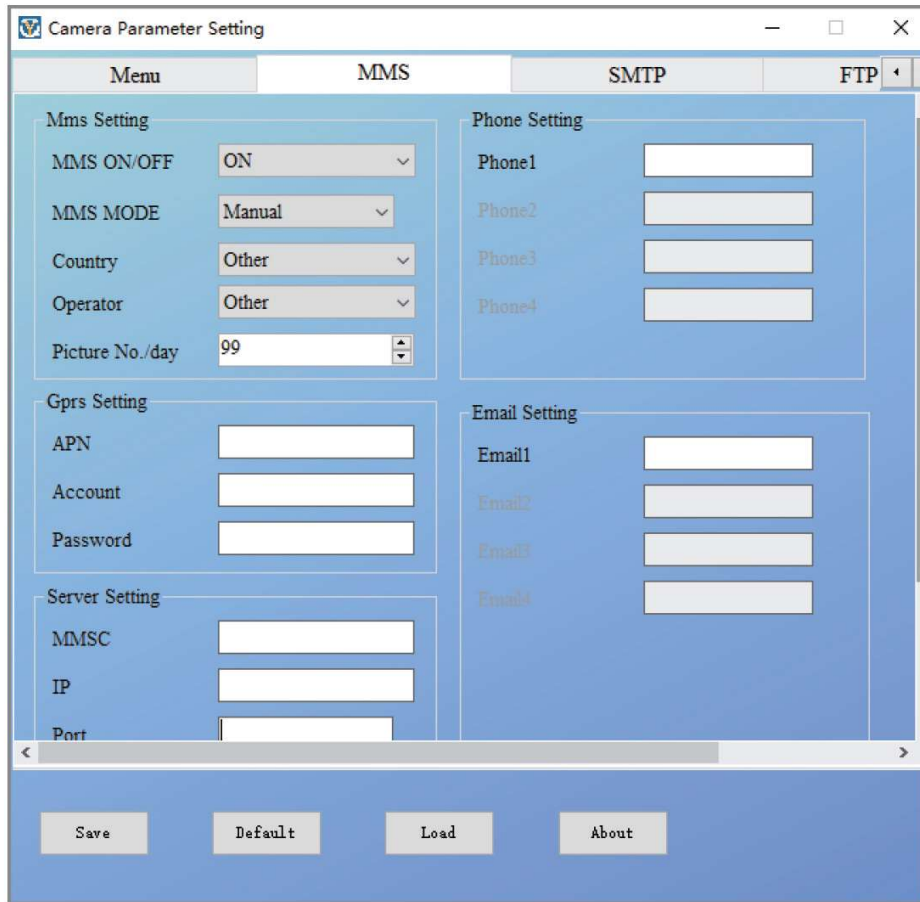
- Choose Country
- Choose Operator
- Fill in the phone number in the right-side blank column as receiver
- Fill in the email address for photos receiving



## Manual MMS Mode:

If there is no configured information for selection, please choose Manual MMS Mode.

Firstly, User need to choose manual and contact SIM card carrier to get and fill in the APN, Account, Password, MMSC, IP and Port information. Secondly, fill in receiver phone number or E-mail address at right side.



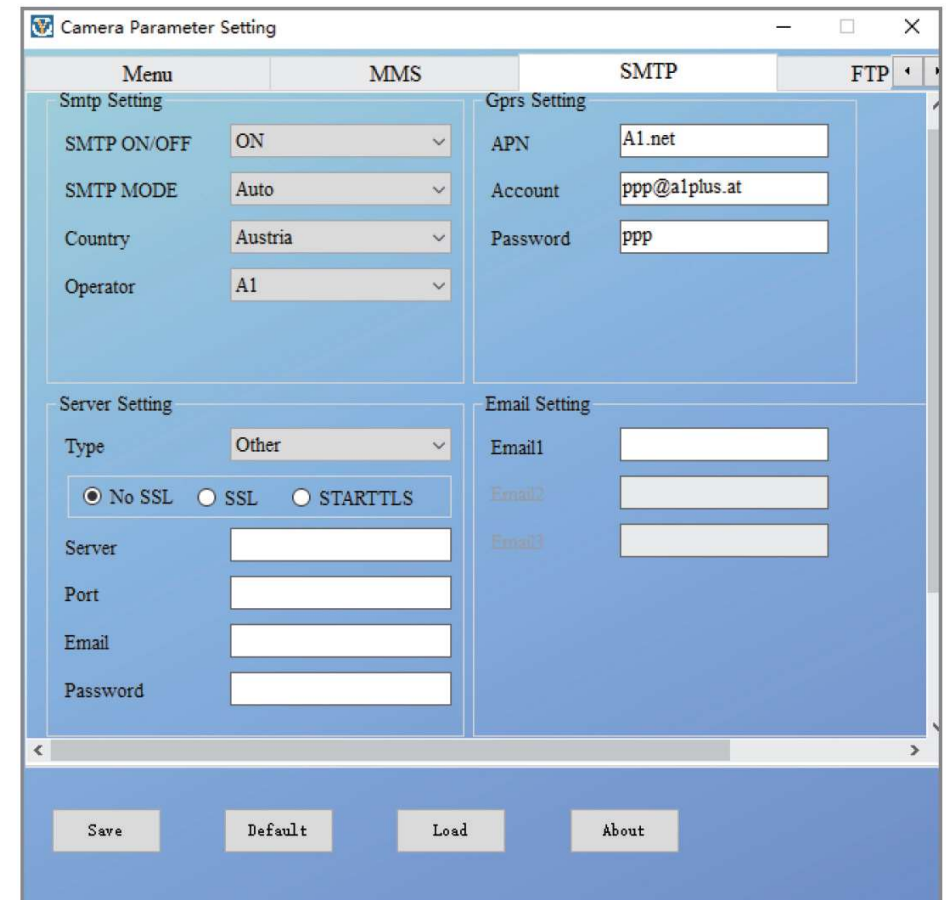
## Fix SMTP Setting

This way of sending pictures is also called data transmission. It's highly popular now, the picture is sent from email to email, only charging the data cost.

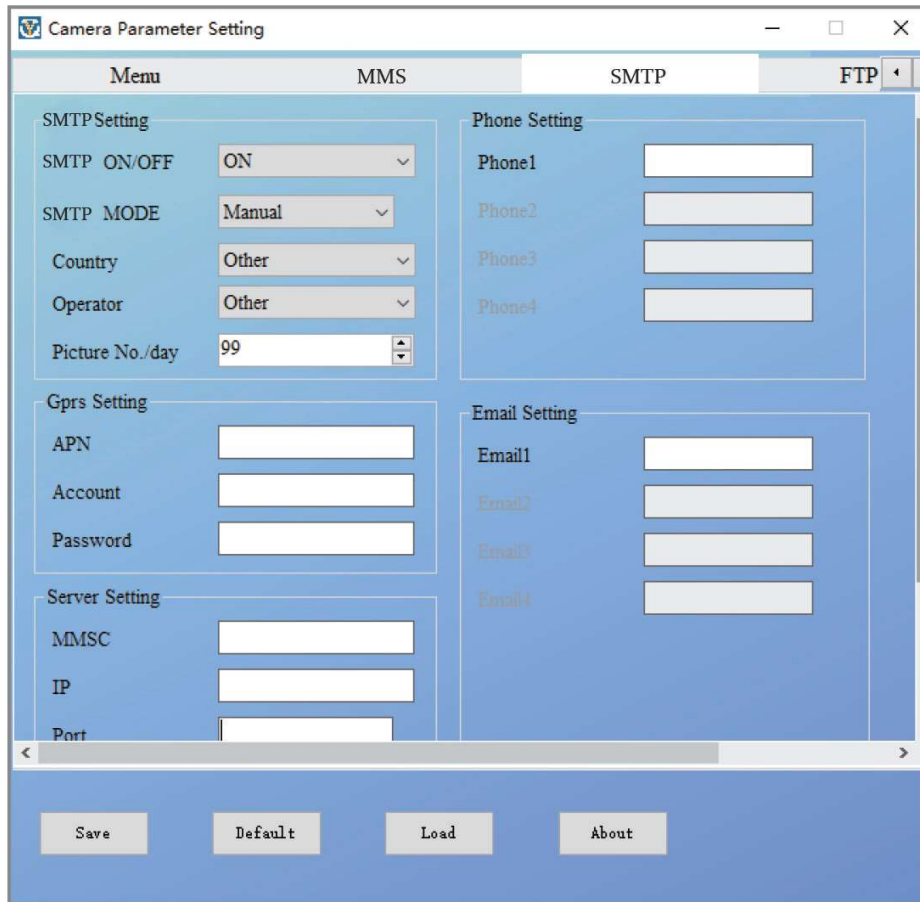
## Auto SMTP Mode:

In Auto SMTP Mode, there is configured information for selection

- Choose Country
- Choose Operator
- Choose Type of email
- Add sending email address on the left
- Add sending email address password on the left
- Add receiving email address on the right







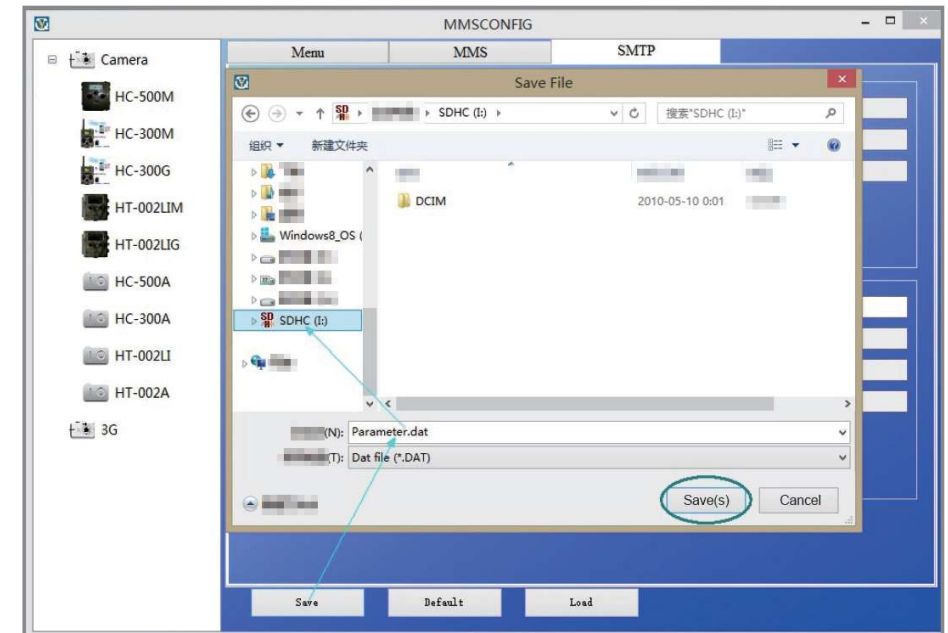
### Manual SMTP Mode:

If there is no configured information for selection, please choose Manual SMTP Mode.

Firstly, User need to contact SIM card carrier to get APN, Account, Password information and fill in; contact sending email provider to get server, port information.

- a. Add sending email address on the left
- b. Add sending email address password on the left
- c. Add receiving email address on the right

### Save the file "Parameter. dat" to Micro SD card



## SMS COMMAND CODE

This camera support SMS remote control, control camera by sending SMS code below.

The SMS codes are:

<b>code</b>	<b>Function</b>	<b>Meaning</b>
<b>*530*</b>	Camera Start	Start Working
<b>*531*</b>	Camera Sleep	Stop Working
<b>*500*</b>	Capture	Camera takes a picture, then sends it to related phone or email(record on MMS,SMTP site)
<b>*505*</b>	Capture and get pic (MMS mode)	Camera take a picture, then sends it to current phone
<b>*520*</b>	Get Pic information	Camera send a a text with picture number, SD card capacity, battery lever.

# TROUBLE SHOOTING

## Camera Doesn't Capture Subject of Interest

- Check the PIR sensitivity. For warm environmental conditions, set the Sensor Level to “Low” and for cold weather use, set the sensor for “High”.
- Try to set your camera up in an area where no heat resources are in the camera’s field of view.
- In some cases, set the camera near to water will make the camera take images with no subject in them.
- Try to aim the camera over ground.
- Try to set camera on stable and immovable objects, i.e.: large trees.
- At night, motion detector may detect beyond range of the IR illumination, reduce distance setting by adjusting sensor sensitivity.
- Rising sun or sunset can trigger sensor. Camera should be reoriented.

- If person/animal moves quickly, it may move out of the camera's field of view before photo is taken. Move camera further back or redirect camera.

### **Camera Stop Taking Images**

- Please make sure that the memory card has enough memory storage. If the card is full, camera will stop taking images.
- Check batteries to make sure that alkaline, NIMH or lithium AA batteries left power is enough for camera to work
- Make sure that the camera power switch is at the "On" position and not at the "Off" or "Test" modes.
- When MMS/SMTP function is on, there will be around 1minute interval for camera to send out photo before camera take the next photo.
- Please format the memory card when you first time to use it or change to use another memory card

### **Night Vision Flash Range Doesn't Meet Expectation**

- make sure that batteries are fully charged or left power is enough.
- High-quality 1.5V NIMH or Lithium rechargeable AA batteries can offer much better Infra flash range than alkaline batteries.
- To ensure accuracy and quality of night image, please try to mount camera on dark environment without obvious light sources.
- To ensure accuracy and quality of night time image, please mount camera to dark environment without any obvious light sources;
- Certain surroundings (like trees, walls, ground, etc.) within flash range can get you better night time images; please do not aim camera to total open field where there is nothing within IR flash range to reflect flash back, it's like shinning a flashlight into sky in night, you just can't see anything, same does camera.

## Camera Take Images but won't send them to mobile phone /E-mail

- If you choose manual mode, the info you fill in may have a problem, Contact SIM card carrier to confirm all the info such as Apn, server, port is correct.
- When you turn on MMS function, it doesn't need to add international phone zone number before the phone number, just fill in your mobile phone number.
- When you turn on SMTP function, please make sure that your email's server and port is correct, some email server will reject email as SPAM, you can try to find your email at SPAM box or contact seller to get test email and have a try.
- Don't rename parameter.dat, you can check your phone number or E-mail by camera menu, please save parameter.dat at the boot of memory card, otherwise camera can't recognize the parameter.dat

# WARRANTY

With great pride and full confidence in products, we always keep our words which are given to our customers as specified warranty terms and services below. Based on a strict QC system, we initially offer all our customers one-year long time limited warranty.

Our products are warranted against defects in materials and workmanship for a period of one year from the date of original purchase. If a defect exists, we will, at our option and to extent permitted by law will

- (1) repair the product at no charge using new or refurbished parts;
- (2) exchange the product with a functionally equivalent product that is new or refurbished.

This warranty excludes damage from abuse, accident, modifications or others that are not defects in materials and workmanship. This warranty only covers failures due to defects in materials or workmanship under normal usage. To obtain warranty service, please contact us to determine the nature of problem before return the product under this warranty (with a written description of the problem and print samples) for repairing or exchanging.