

# TRAIL CAMERA

HC900G/HC900M



USER MANUAL



1080P full  
hd

**0.3s**

Fast trigger  
time

**120°**

Detection angle



Rugged  
waterproof

## PACKING INCLUDES



Camera



Manual



Mounting  
Strap



Card Reader



High gain  
Antenna

## SPECIFICATIONS

### Cellular/Wireless

Frequency	2G(GSM) HC900M 3G(WCDMA) HC900G
-----------	------------------------------------

### Photo recording

Photo resolution	16 MP
File format	JPG
Time lapse mode	5min/30min/60min
Multi-shot mode	Up to 9 photos per detection
Stamp (photos and video)	Date, time, temperature (°C/°F) and moon phase
Capture mode	Color by day, black and white by night

### Video recording

Video resolution	1920 x 1080/30fps (FHD)
File format	AVI/H.264
Sequence length	Adjustable from 10 to 90 s
Capture mode	Color by day, black and white by night

### Audio

Sound recording (automatically recorded in video mode)	N/A
--	-----

### Memory storage

Support	•Internal memory: none •External memory : SD/SDHC card (up to 64 GB)
---------	---

02

### Viewing

Built-in screen	TFT 2.0"
<b>Power source</b>	
Alkaline or lithium batteries	8 x AA
Lithium battery pack	Rechargeable battery pack(LIT-900)
External (5.5X2.1mm Jack)	DC12V 1000mA (6V~12V)

### Detection system

Motion sensor	Single PIR
Detection angle	120°
Detection range	25 meters/ 75ft
Trigger speed	0.3 sec
Delay between each detection	Adjustable from Instant to 30 min

### Night time illumination system

LEDs	44 LEDs
Flash range	<25 meters / 75ft
Exposure	Automatic infrared level adjustment

### Optical field of view

120°

### Dimensions

150mm X 100mm X 60 mm

### Recommendations

Operating temperature	(-30 °C to + 50 °C) (-22 °F to +122 °F)
Storage temperature	(-40 °C to + 60 °C) (-40 °F to +140 °F)

03

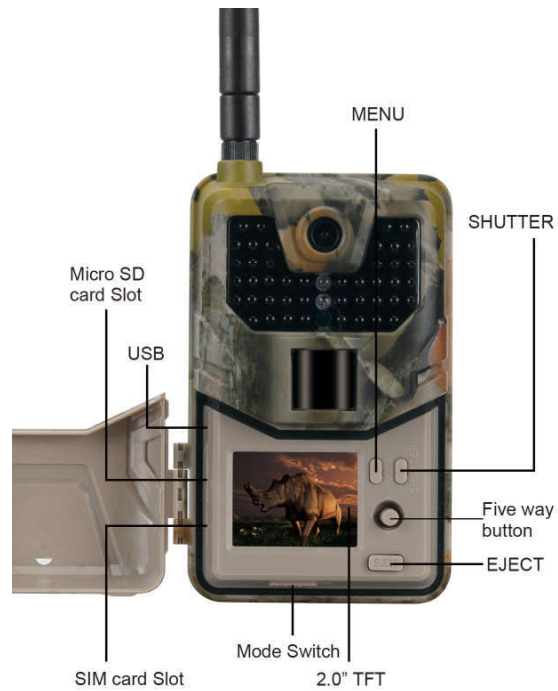
## THE SIZE LIST FOR TRANSMITTING TYPE

Version / Function	4G	3G	2G
<b>MMS</b>	<100KB(Default), Options:200KB/100KB/50KB (depend on the limit of the local operator)		
<b>SMTP</b>	<40MB (Picture and Video)	<1MB (Picture only)	Same with MMS
<b>FTP</b>	<40MB (Picture and Video)	Not support (need to be customized)	Not support (need to be customized)
<b>SIM</b>	<b>Support</b>		
<b>Live Show</b>	Under development (Only in 4G camera)		

04

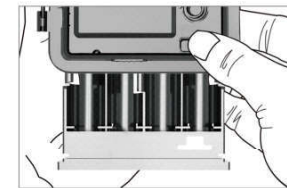


05



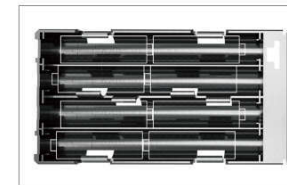
06

## INSTALLING BATTERIES



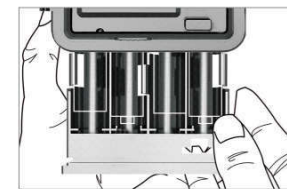
### IF USING AA - ALKALINE BATTERIES

1. Press EJECT, the battery box will pop out



2. Insert the AA batteries accordingly as indicated by the positive and negative battery icons

3. Slide the battery compartment back into the camera housing until it is completely engaged in the slot in the bottom of the housing



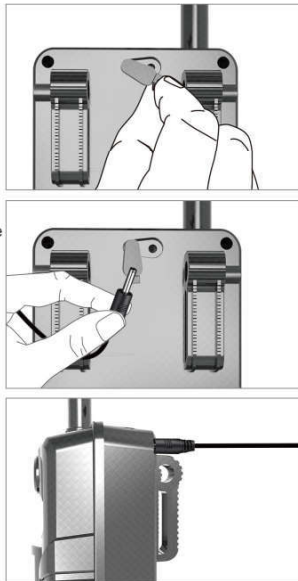
NOTE: Installing any of the 8-AA batteries in the wrong direction may cause the batteries to leak acid and could possibly explode, causing camera failure and damage to the battery compartment.

07

## BATTERIES CONT.....

### IF USING 12V DC POWER SOURCE

1. Remove the rubber port cap at the bottom of the camera .
2. Using a universal 12V DC cord, plug in to the bottom port option.
3. When not in use, replace the rubber port cap at the bottom of the camera to protect the 12V DC universal plug-in port.

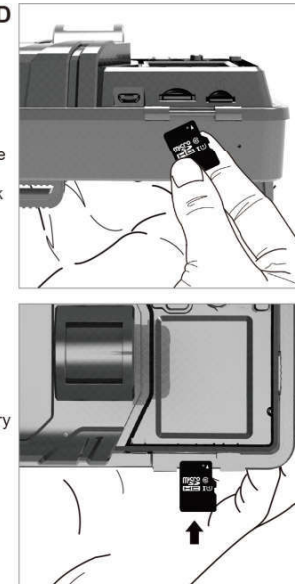


08

## MEMORY CARD INSTALL

### INSTALL MICRO-SD CARD

1. Insert the Micro SD card (Max 64 GB) with the contacts facing away. The Micro SD card should slide in freely with little resistance. Continue pressing the card inward until you hear a click. This means the Micro SD card is locked in place and ready for use.



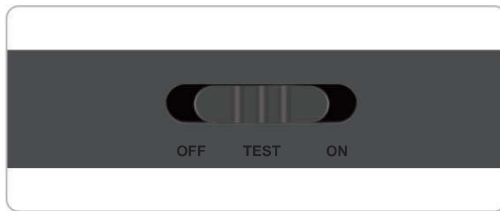
2. To remove Micro SD card, press the card inwards to release.

Caution: we recommend class6 & above high speed memory card, cheap memory card may damage the pictures and videos

09

## Power on

Slide Power Switch from OFF to TEST, camera screen power on (don't slide it from OFF to ON directly)



## CONTROL PANEL

### Under TEST Mode

- Press **MENU** to launch the system menu or exit.
- Press **SHUTTER** to manually trigger the shutter. A photo or video (depending on the mode) will be taken and saved to the memory card.
- The Rocker has 5 functions: **LEFT**, **RIGHT**, **UP**, **DOWN** and **OK**
- Press **RIGHT** to review photo or video, **UP / DOWN** to browse the pictures and videos and

- Press **LEFT** to start and stop Video, Press **SHUTTER** to exit.
- Press **LEFT** directly to get the IMEI (in the TEST mode).

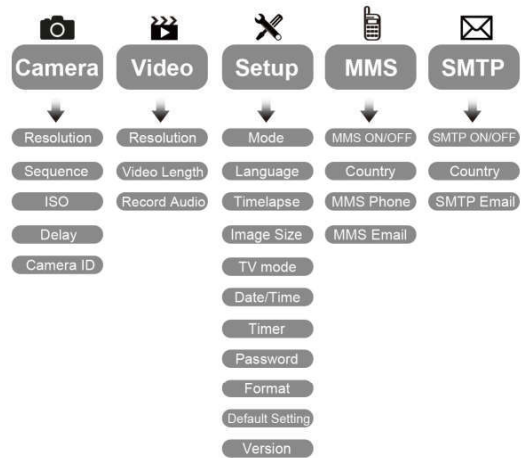


## ON

In this mode, the screen power off and remoter is useless. The camera works automatically. Will capture and send picture out if detected any motions by PIR.

# Advanced Setting

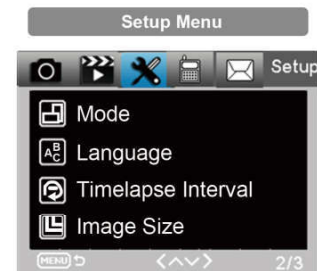
## Menu list



Camera	Sub menu	Description
<b>Resolution</b>	16MP, 12MP, 8MP	Photo Size
<b>Sequence</b>	1/3/6/9	Number of photos taken every time
<b>ISO</b>	Auto,100,200,400	The camera exposure level
<b>Delay</b>	1/5/10/30 sec/min	Waiting time from the last taking
<b>Camera ID</b>	0-0-0 0-0-0	Camera ID



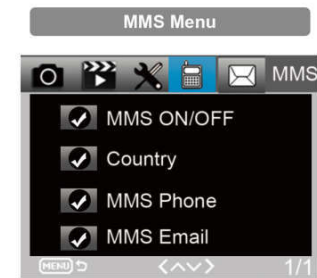
Video	Sub menu	Description
<b>Resolution</b>	1080P, 720P, WVGA, VGA	Video size
<b>Video Length</b>	10S, 30S, 60S, 90S	The time length of video
<b>Record Audio</b>	On, Off	If On, Video sound is recorded



Setup	Sub menu	Description
<b>Mode</b>	Camera, video, camera& video, Timelapse	Taking picture, video, picture and video, taking picture regular
<b>Language</b>	English, Francais, Deutsch and so on	Camera Menu language
<b>Timelapse interval</b>	5/30/60 Min	Taking picture or video every 5/30/60 minutes constantly
<b>Image Size</b>	Small/Normal/Big	Size for transmitting picture Small <100KB Normal <150KB Big <200KB
<b>TV Mode</b>	NTSC, PAL	TV play mode



Setup	Sub menu	Description
<b>Date/Time</b>	2018-09-03 16:37:25	Year-Month-Date Hour: Minute:Second
<b>Timer</b>	ON, OFF	If On, the camera only works in the period
<b>Password</b>	****	4 digital numbers(1314 Universal password)
<b>Format</b>	SD Card	All files of memory card will be deleted
<b>Default Setting</b>	return menu setting to defaults	Cancel/OK
<b>Version</b>	03/09/2018 16:37:25	Camera version



MMS	Sub menu	Description
<b>MMS ON/OFF</b>	Off/On	MMS Off/On
<b>Country</b>	Set in MMSCONFIG	Operator name
<b>MMS Phone</b>	Set in MMSCONFIG	Receiver's phone of mms
<b>MMS E-mail</b>	Set in MMSCONFIG	Receiver's mail of mms



SMTP	Sub menu	Description
SMTP ON/OFF	Off/On	SMTP Off/On
Country	Set in MMSCONFIG	Operator name
SMTP E-mail	Set in MMSCONFIG	Receiver's mail of picture

## MMSCONFIG SETTING

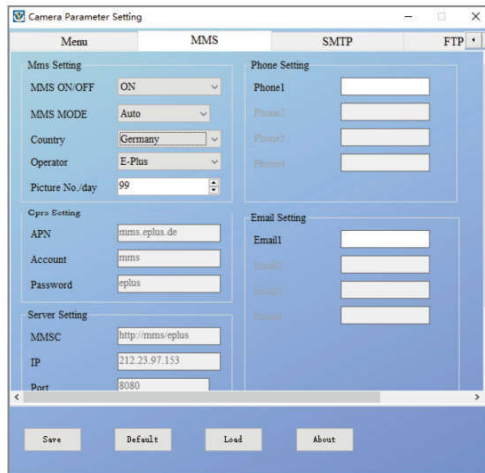
- Load CD into the computer
- Click the MMSCONFIG.exe file from MMSCONFIG folder
  - 📁 MMSCONFIG >>> 📁 MMSCONFIG
- Fix Camera, Video and System Menu Setting (the second way to set the menu)

### ➤ Fix MMS Setting

#### MMS Auto Mode

In MMS Auto mode, there is configured information for selection

- a. Choose Country
- b. Choose Operator
- c. Fill in the phone number in the right-side blank column as receiver
- d. Fill in the email address for photos receiving



#### MMS Manual Mode:

If there is no configured information for selection, please choose Manual MMS Mode.

Firstly, User need to choose manual and contact SIM card carrier to get and fill in the APN, Account, Password, MMSC, IP and Port information. Secondly, fill in receiver phone number or E-mail address at right side.



#### Fix SMTP Setting

This way of sending pictures is also called data transmission. It's highly popular now, the picture is sent from email to email, only charging the data cost.

### SMTP Auto Mode:

In Auto SMTP Mode, there is configured information for selection

- Choose Country
- Choose Operator
- Choose Type of email
- Add sending email address on the left
- Add sending email address password on the left
- Add receiving email address on the right

The screenshot shows the 'Camera Parameter Setting' window with the 'SMTP' tab selected. The 'SMTP Setting' section is configured as follows: SMTP ON-OFF is 'ON', SMTP MODE is 'Auto', Country is 'Austria', and Operator is 'A1'. The 'Gprs Setting' section shows APN as 'A1.net', Account as 'ppp@a1plus.at', and Password as 'ppp'. The 'Server Setting' section shows Type as 'Other', with radio buttons for 'No SSL', 'SSL', and 'STARTTLS' (the first is selected). The 'Email Setting' section has empty fields for Email, Email, and Email. The 'Save', 'Default', 'Load', and 'About' buttons are visible at the bottom.

22

The screenshot shows the 'Camera Parameter Setting' window with the 'SMTP' tab selected. The 'SMTP Setting' section is configured as follows: SMTP ON-OFF is 'ON', SMTP MODE is 'Manual', Country is 'Other', and Operator is 'Other'. The 'Picture No./day' is set to '99'. The 'Phone Setting' section has empty fields for Phone1, Phone2, Phone3, and Phone4. The 'Gprs Setting' section shows empty fields for APN, Account, and Password. The 'Server Setting' section shows empty fields for MMSC, IP, and Port. The 'Email Setting' section has empty fields for Email, Email, and Email. The 'Save', 'Default', 'Load', and 'About' buttons are visible at the bottom.

### SMTP Manual Mode:

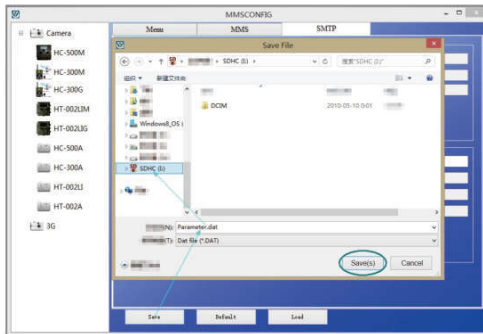
If there is no configured information for selection, please choose Manual SMTP Mode.

Firstly, User need to contact SIM card carrier to get APN, Account, Password information and fill in; contact sending email provider to get server, port information.

23

- a. Add sending email address on the left
- b. Add sending email address password on the left
- c. Add receiving email address on the right

Save the file "Parameter. dat" to Micro SD card



## SMS COMMAND CODE

This Camera supports SMS remote control by sending SMS code as below :

The SMS codes are:

code	Function	Meaning
<b>*530*</b>	Camera Start	Start Working
<b>*531*</b>	Camera Sleep	Stop Working
<b>*500*</b>	Capture	Camera takes a picture, then sends it to related phone or email(record on MMS,SMTP site)
<b>*505*</b>	Capture and get pic (MMS mode)	Camera take a picture, then sends it to current phone.
<b>*520*</b>	Get Pic information	Camera send a a text with picture number, SD card capacity, battery lever.

## **TROUBLE SHOOTING**

### **Camera Doesn't Capture Subject of Interest**

- Check the PIR sensitivity. For warm environmental conditions, set the Sensor Level to "Low" and for cold weather use, set the sensor for "High".
- Try to set your camera up in an area where no heat resources are in the camera's field of view.
- In some cases, set the camera near to water will make the camera take images with no subject in them.
- Try to aim the camera over ground.
- Try to set camera on stable and immovable objects, i.e.: large trees.
- At night, motion detector may detect beyond range of the IR illumination, reduce distance setting by adjusting sensor sensitivity.
- Rising sun or sunset can trigger sensor. Camera should be reoriented.

- If person/animal moves quickly, it may move out of the camera's field of view before photo is taken. Move camera further back or redirect camera.

### **Camera Stop Taking Images**

- Please make sure that the memory card has enough memory storage. If the card is full, camera will stop taking images.
- Check batteries to make sure that alkaline, NIMH or lithium AA batteries left power is enough for camera to work
- Make sure that the camera power switch is at the "On" position and not at the "Off" or "Test" modes.
- When MMS/SMTP function is on, there will be around 1minute interval for camera to send out photo before camera take the next photo.
- Please format the memory card when you first time to use it or change to use another memory card

#### **Night Vision Flash Range Doesn't Meet Expectation**

- make sure that batteries are fully charged or left power is enough.
- High-quality 1.5V NIMH or Lithium rechargeable AA batteries can offer much better Infra flash range than alkaline batteries.
- To ensure accuracy and quality of night image, please try to mount camera on dark environment without obvious light sources.
- To ensure accuracy and quality of night time image, please mount camera to dark environment without any obvious light sources;
- Certain surroundings (like trees, walls, ground, etc.) within flash range can get you better night time images; please do not aim camera to total open field where there is nothing within IR flash range to reflect flash back, it's like shining a flashlight into sky in night, you just can't see anything, same does camera.

#### **Camera Take Images but won't send them to mobile phone /E-mail**

- If you choose manual mode, the info you fill in may has problem, Contact SIM card carrier to confirm all the info such as Apn, server, port is correct.
- When you turn on MMS function, it doesn't need to add international phone zone number before the phone number, just fill in your mobile phone number.
- When you turn on SMTP function, please make sure that your email's server and port is correct, some email server will reject email as SPAM, you can try to find your email at SPAM box or contact seller to get test email and have a try.
- Don't rename parameter.dat, you can check your phone number or E-mail by camera menu, please save parameter.dat at the boot of memory card, otherwise camera can't recognizes the parameter.dat

## **WARRANTY**

With great pride and full confidence in products, we always keep our words which are given to our customers as specified warranty terms and services below. Based on a strict QC system, we initially offer all our customers one-year long time limited warranty.

Our products are warranted against defects in materials and workmanship for a period of one year from the date of original purchase. If a defect exists, we will, at our option and to extent permitted by law will

- (1) repair the product at no charge using new or refurbished parts;
- (2) exchange the product with a functionally equivalent product that is new or refurbished.

This warranty excludes damage from abuse, accident, modifications or others that are not defects in materials and workmanship. This warranty only covers failures due to defects in materials or workmanship under normal usage. To obtain warranty service, please contact us to determine the nature of problem before return the product under this warranty (with a written description of the problem and print samples) for repairing or exchanging.