

Service Overview

Carefully read through this chapter for a look at various components of the notebook and necessary cautions and tools before performing any service and repairs.

To provide the best service and support for the ASUS Z96J Series, we have provided the below information for technicians from distributors and resellers to perform the complete notebook disassembly and assembly. But before performing the procedures, please be sure to read through the overview in this chapter for component overview, cautions and tools to avoid any unwarranted damages to the notebook's hardware.

The following chapter includes:

- Z96J Overview
- Components
- Precautions
- Appropriate Tools

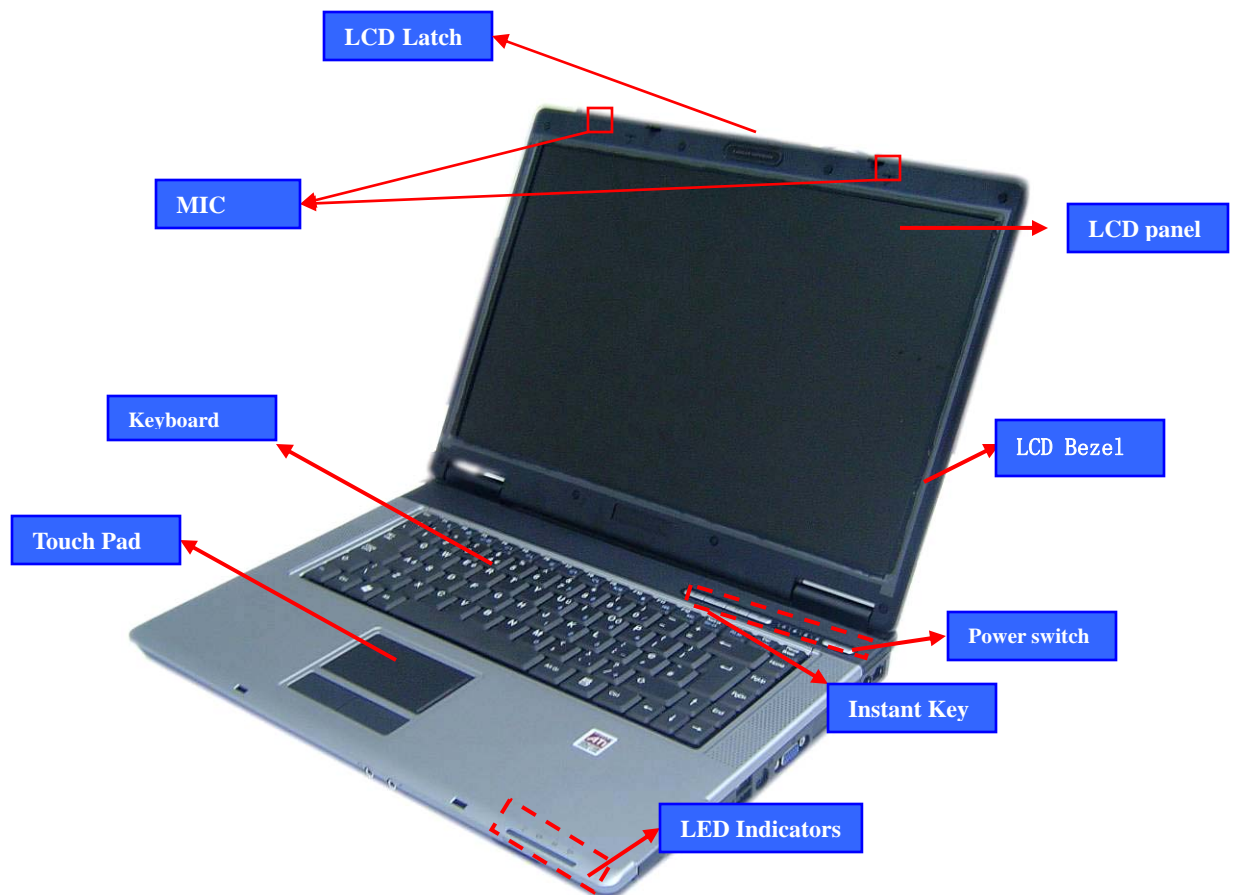
Z96J Series Overview and Components

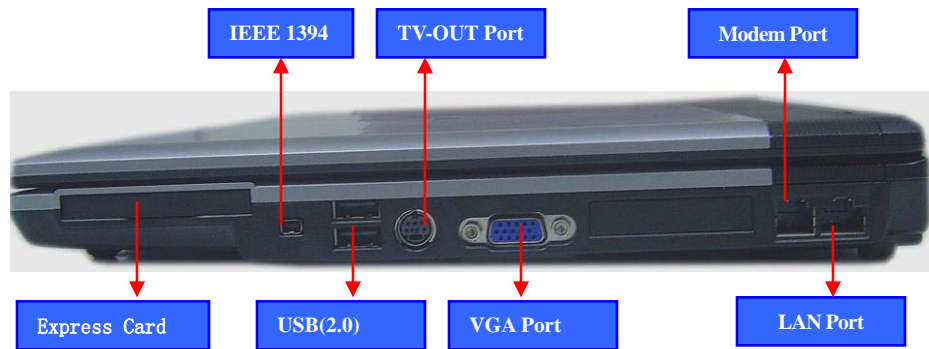
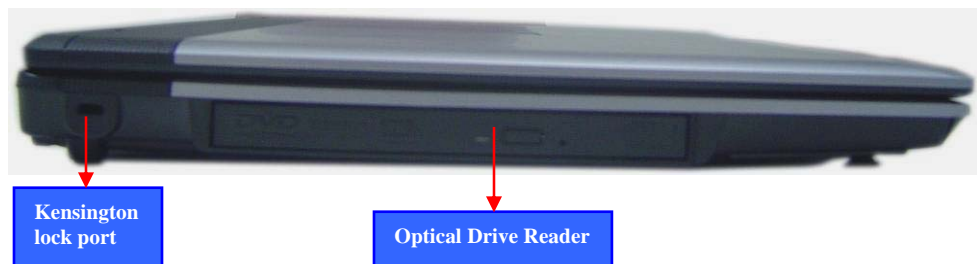
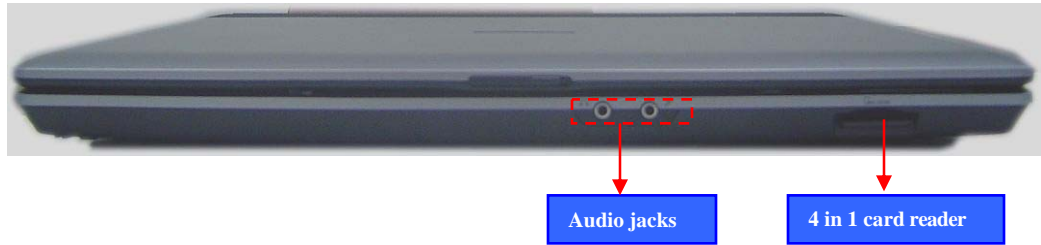
The ASUS Z96J Series Notebook is a product combining the power of Intel® Pentium M CPU with uFC-PGA mobile system. In this section, an overview for the Z96J, along with its components, will be presented.

OVERVIEW

Z96J Overview

The illustrations below show the notebook's overview from front view, right side view, left side view, and rear side view. Most of the parts will be discussed in this manual.





COMPONENTS

Components

The illustrations below show the components of the Z96J Series.

LCD

LCD Panel*

The illustration below shows the LCD display panel. The Z96J Series notebook comes with 15.4" TFT LCD Panel.



**LCD
BRACKETS**

LCD Bracket

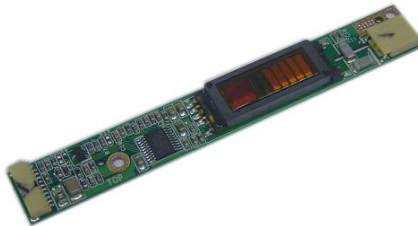
The illustration below shows the LCD Bracket.



**INVERTER
BOARD
MODULE**

Inverter Board

The illustration below shows the inverter board, which is hidden underneath the lower edge of the LCD front bezel.



LCD HINGE

LCD Hinge

The illustration below shows the LCD Hinges.



L C D C A S E

LCD Case

The illustration below shows the LCD case. Here is the LCD front cover, back cover.



K E Y B O A R D

Keyboard

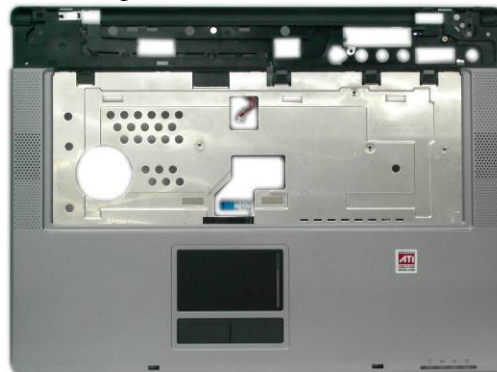
The illustration below shows the keyboard plate. It can be exchanged with keyboard plates with different language layouts, such as U.S., German, Japanese, British, France and others.



T O P C A S E &

Top Case Module

The illustration below shows the top case of the notebook..



T O U C H P A D

Touch Pad Module

The illustration below shows the Touch Pad module.



BATTERY

Battery Pack

The illustration below shows the battery pack of the notebook. It's located at bottom of the notebook.



**OPTICAL
DRIVE**

Optical Drive

The illustration below shows the Optical Drive



HDD BRACKET

HDD Bracket

The illustration below shows the HDD Bracket.



HDD DRIVE

Hard Disk Drive

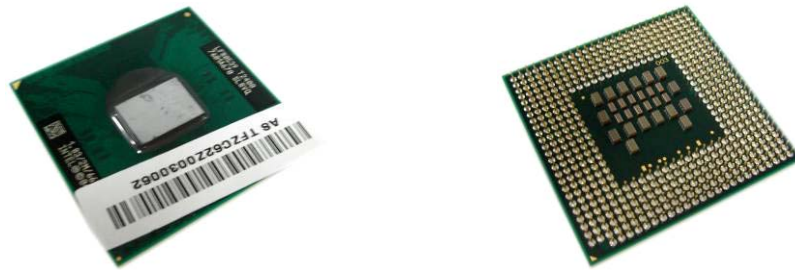
The illustration below shows the 2.5" industry-standard HDD with 9.5mm height.



C P U

uFC-PGA CPU Module

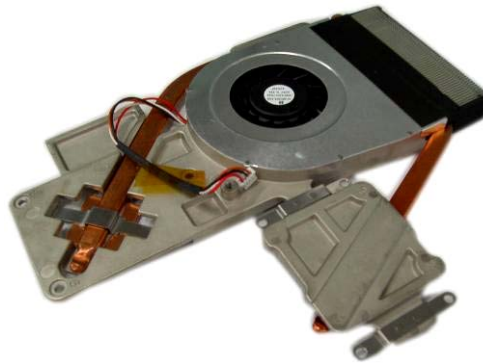
The illustration below shows the Intel uFC-PGA CPU Module, top and bottom views



C P U T H E R M A L M O D U L E

CPU Thermal Module

The illustration below shows the thermal module for the CPU. It's located on the top of CPU.



C P U D O O R

CPU door

The illustration below shows CPU door.



overview

MEMORY

Memory Module

The illustration below shows the industry-standard 200pin SO-DIMM DDR SDRAM module for the notebook.



**MOTHER
BOARD
MODULE**

Motherboard Module

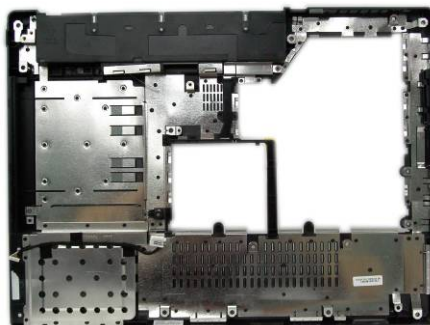
The illustration below shows the motherboard module of the notebook.



BOTTOM CASE

Bottom Case Module

The illustration below shows the bottom case module of the notebook. It include speaker sets



**K/B COVER
MODULE**

Indicator Cover Module

The illustration below shows the indicator cover.



WIRELESS
LAN MODULE

Wireless LAN Module

The illustration below shows the Wireless LAN Module of the notebook. It contains Wireless LAN Card.



BLUETOOTH
MODULE

Bluetooth Module

The illustration below shows the Bluetooth Module of the notebook.



Service Overview

Please pay special attention to the cautions below to prevent any damages to the notebook and also please be sure to select the appropriate tools described in this section to perform any services desired.

CAUTIONS

Precautions

Before you perform any service and/or repair on the notebook, please follow the steps below first.

1. Be sure that the notebook is powered down.
2. Disconnect the AC plug from the notebook



3. Turn the notebook over. Unlock and hold the latches, and remove the battery.



3. Remove all rings, watches and any other metal objects from your hands.



4. Always wear a ground strap on your hand to protect the notebook from static discharge.

overview

TOOLS

Appropriate Tools

The illustrations below show the appropriate tools that should be used for the notebook's service and repair.

CROSS
SCREW-
DRIVER

Phillips-head Screwdriver

Use a Phillips-head screwdriver to fasten/remove the K- or B-typed screws.



FLATHEAD
SCREW-
DRIVER

Single-Slotted Screwdriver

Use a single-slotted screwdriver to lock/unlock the flexible cable connector locks



TWEEZERS

Tweezers

Use a pair of tweezers to remove/insert flexible cables.



INSERTION
AND
EXTRACTION
TOOL FOR
FPC
CONNECTOR

Insertion and extraction tool for FPC connector

Use insertion and extraction tool for FPC connector to handle locking and unlocking of FPC connectors.



VACUUM
HANDLING
TOOL

Vacuum Handling Tool

