

Disassembly Procedure

Please follow the information provided in this section to perform the complete disassembly procedure of the notebook. Be sure to use proper tools described before.

ASUS Z96J Series Notebook consists of various modules. This chapter describes the procedures for the complete notebook disassembly. In addition, in between procedures, the detailed disassembly procedure of individual modules will be provided for your service needs.

The disassembly procedure consists of the following steps:

- Battery Module
 - HDD Module
 - Memory Module
 - WLAN Module
 - CPU Module
 - Optical Drive Module
 - Keyboard Module
 - Top Case Module
 - Motherboard Module
 - Bottom case Module
 - LCD Module
-

BATTERY

Battery Module

The illustration below shows how to remove the battery module.

1. Turn the notebook over. Unlock and hold the latch, and remove the battery.



HDD
MODULE

HDD Module

The illustrations below show how to remove the HDD module from the notebook.

Removing HDD Module

1. Remove 2 screws and take the HDD out.



2. Remove 4 screws to separate HDD from HDD housing



HDD
MODULE
REMOVAL

MEMORY
MODULE

Memory Module

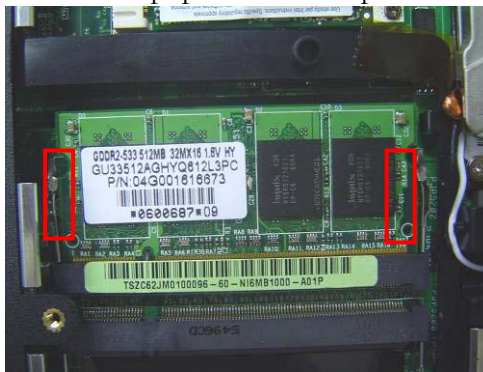
The illustration shows how to remove the memory module from the notebook.

Removing Memory module

1. Remove 3 screws and take the CPU door away.



2. Latches and pop the module up to a 45° angles, and then pulling out the module in that angle.



WLAN
MODULE

WLAN Module

The illustrations below show how to remove the WLAN module from the notebook.

Remove WLAN module

1. Remove 2 Antenna cables from Wireless LAN Module



WLAN
MODULE
REMOVAL

- Remove 2 screws, then take the WLAN module away.



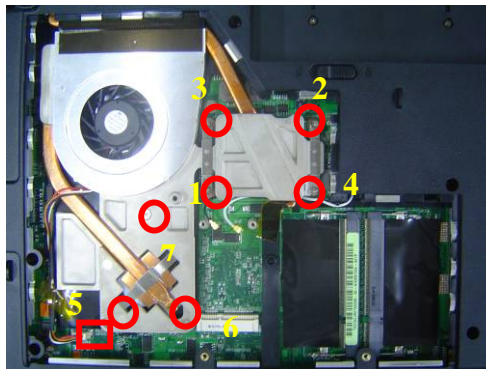
CPU MODULE
REMOVAL

CPU Module

The illustrations below show how to remove the CPU module from the notebook.

Removing CPU

- Disconnect the FAN cable and remove 7 screws from 1 to 7, then take away the thermal module



- Turn the non-removable screw here 180 degrees counter-clockwise to loosen the CPU.



CPU
REMOVAL

3. Squeeze the vacuum handling pump and use it to lift the CPU away.



Optical Drive Module

OPTICAL
DRIVE
REMOVAL

1. Move 2 screws here, and then pull the ODD module out slowly.



Keyboard Module

The illustration of below shows how to remove the keyboard

KEYBOARD

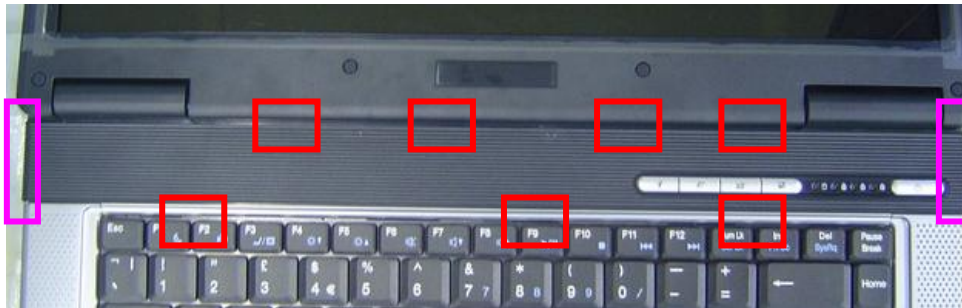
INDICATOR
COVER
REMOVAL

Removing Keyboard and indicator Cover

1. Remove 3 screws here, and then turn over the notebook.



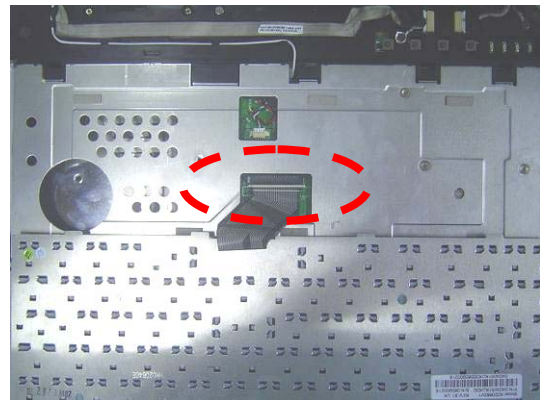
2. Unlock 9 indicator cover latches.



3. Take away indicator cover by hand



4. Pull out the keyboard forward and lay the keyboard on the front side then disconnect the FPC, then take away keyboard.



TOP CASE
MODULE

Top Case Module

The illustrations below show how to disassemble and remove the top case module of the notebook. The module contains the top case itself.

TOP CASE
MODULE

Removing top Case Module

1. Remove 6 screws here, and then disconnect the Coaxial & inverter cable.



2. Turn over the notebook, and then remove 2 screws here.

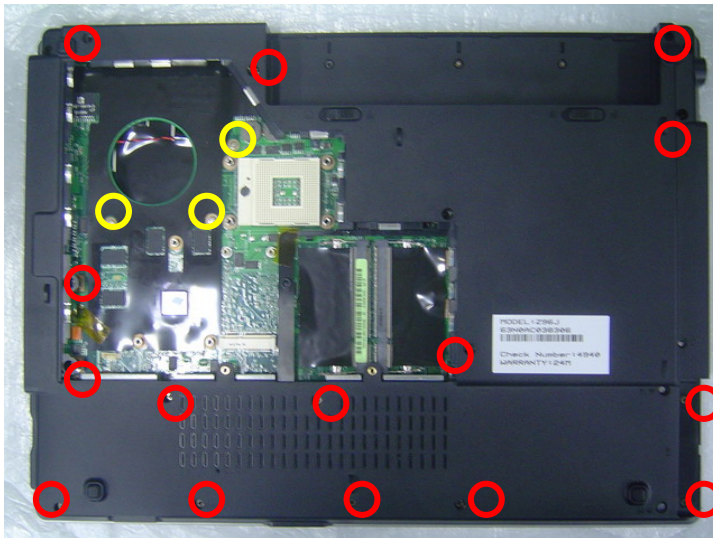


3. Separate the LCD module from the Top Case module

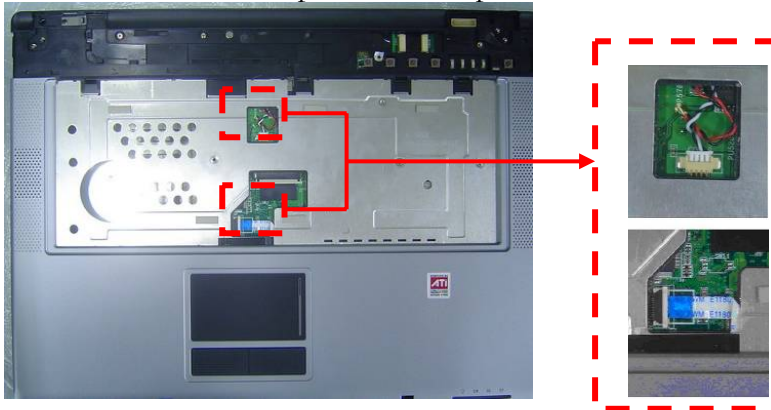


BOTTOM
CASE
REMOVAL

1. Turn over the NB and remove 18 screws on the bottom case.



2. Disconnect the Touchpad FPC and Speaker cable

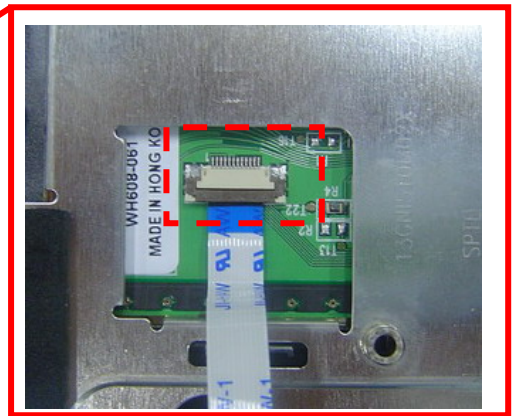
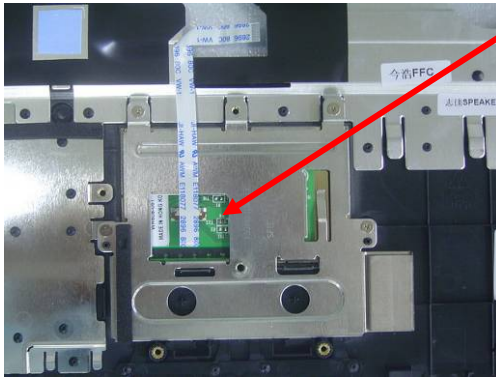


3. Separate the Top case from the bottom case.

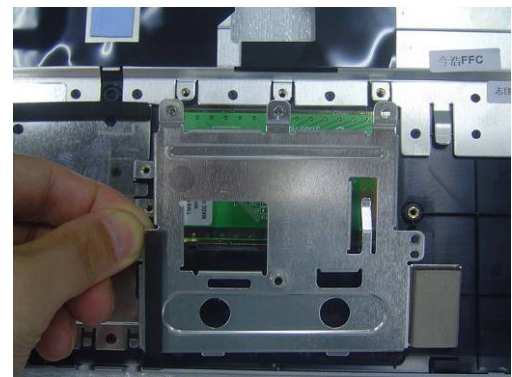
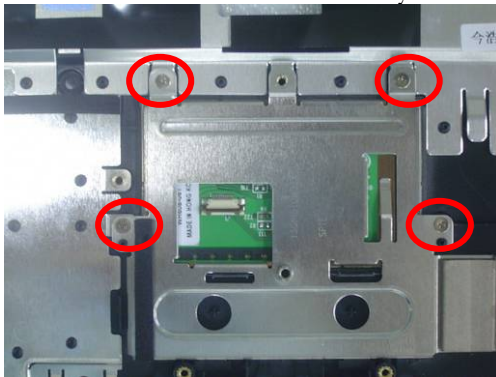


TOPCASE
REMOVAL

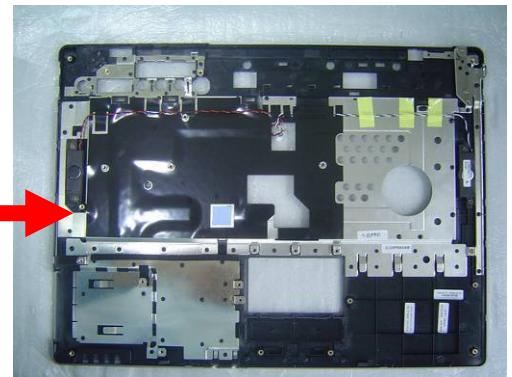
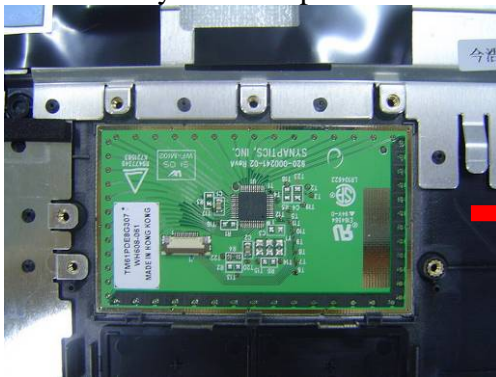
1. Disconnect the touch pad FFC and then take away the touch pad FPC.



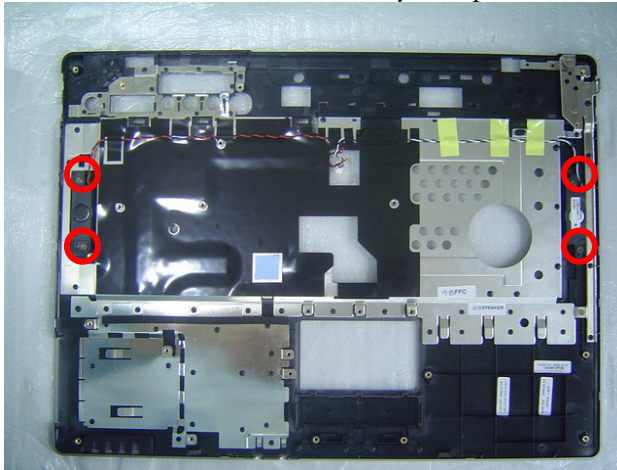
2. Remove 4 screws and take away the touchpad bracket.



3. Take away the touchpad



4. Remove 4 screws and take away the speaker module.



Motherboard

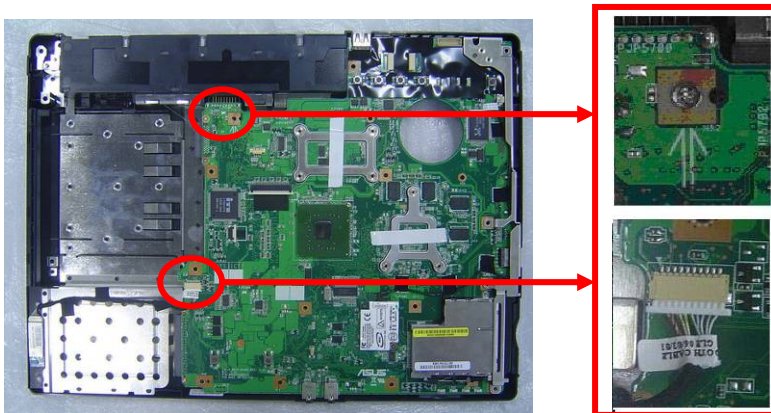
The illustrations below show how to disassemble and remove the Motherboard.

MOTHERBOARD

Removing Motherboard

1. Remove 1 screw here and then disconnect the Bluetooth cables then take away the Motherboard.

MOTHERBOARD
REMOVAL



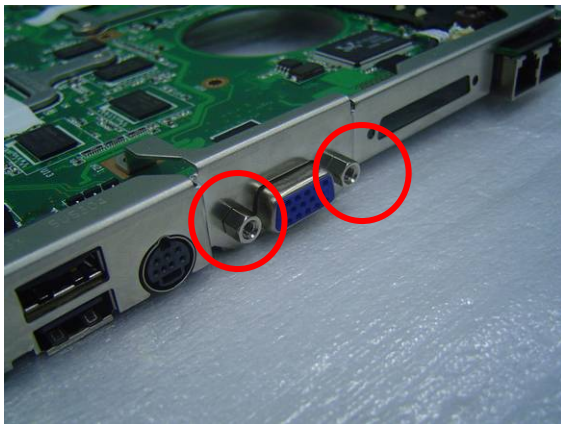
2. Separate the Motherboard from the bottom case.



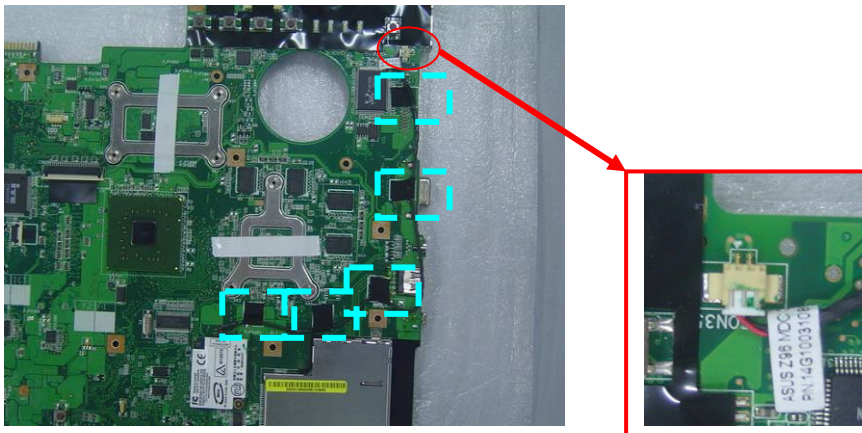
3. Remove 1 screw on the IO bracket.



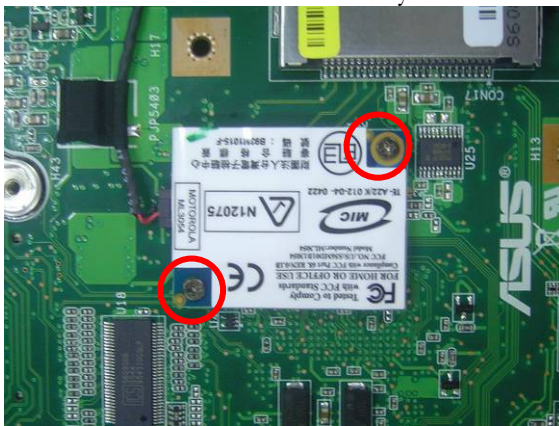
4. Remove 2 screws for CRT on the right side by a spacer screwdriver then take away the IO bracket.



5. Remove 5 pieces of tapes and disconnect the modem cable.



6. Remove 2 screws and take away the modem board.



BOTTOM
CASE
MODULE

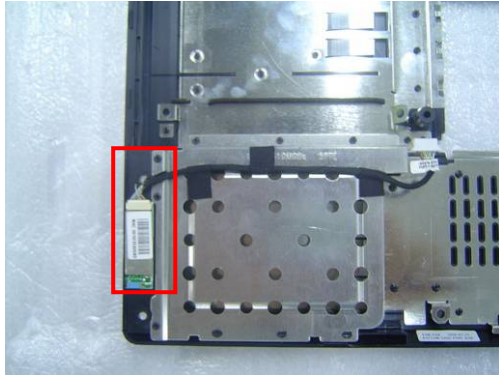
Bottom Case Module

The illustrations below show how to remove and disassemble the Bottom case module. The module contains Bluetooth board, speaker cable.

BOTTOM
CASE
DISASSEMBLY

Disassembling Bottom case Module

1. Remove Bluetooth module from bottom case.



LCD MODULE

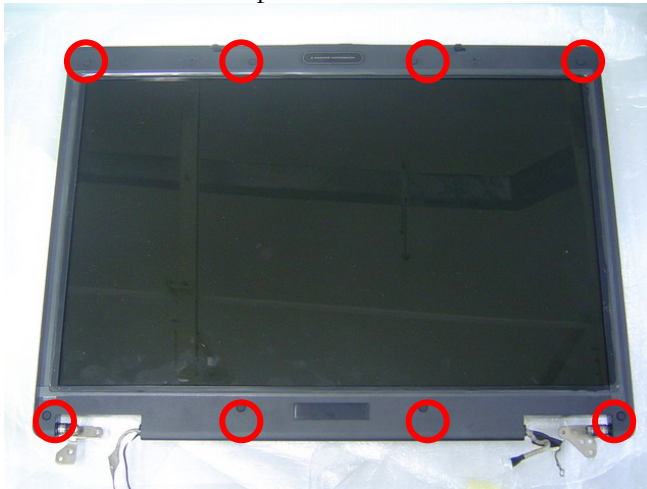
LCD Module

The illustrations below show how to remove and disassemble the LCD module. The module contains LCD panel, Inverter board, LCD bezel, LCD back cover.

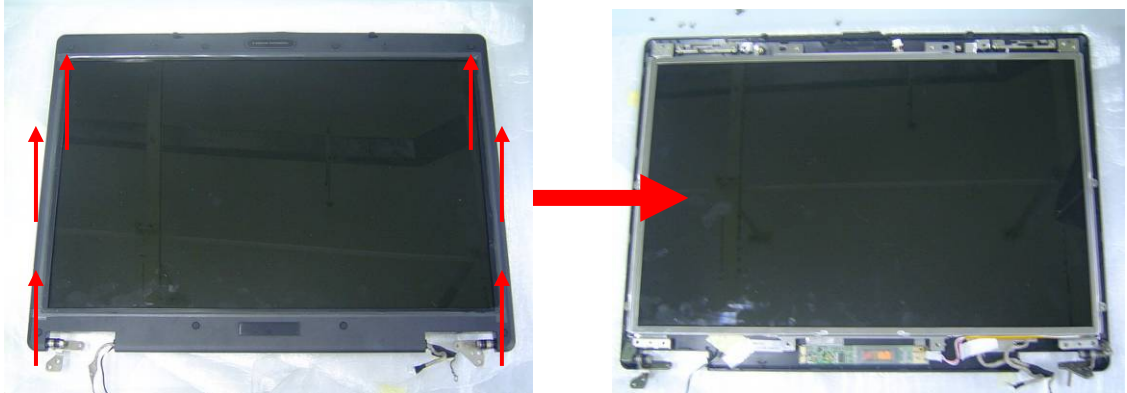
**LCD MODULE
DISASSEMBLY**

Disassembling LCD Module

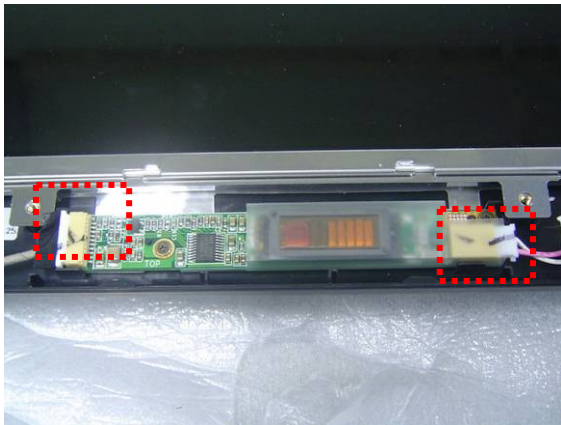
1. Remove 8 rubber pads and 8 screws from LCD module.



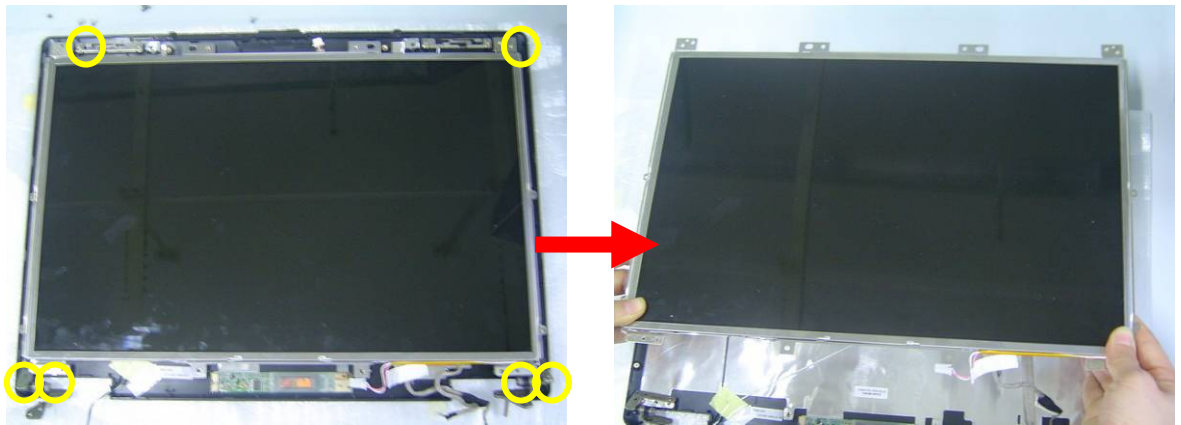
2. Prying the inside edges of the LCD bezel, and then separates it from LCD back cover.



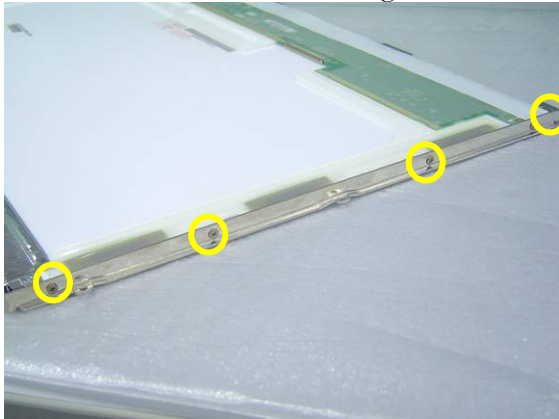
3. Disconnect the LCD cable. and inverter cable



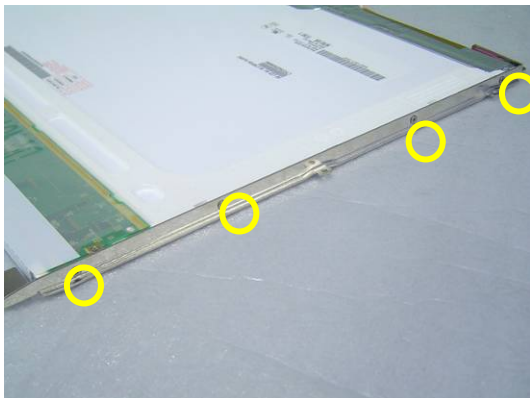
4. Remove 6 screws and take away the LCD panel.
-



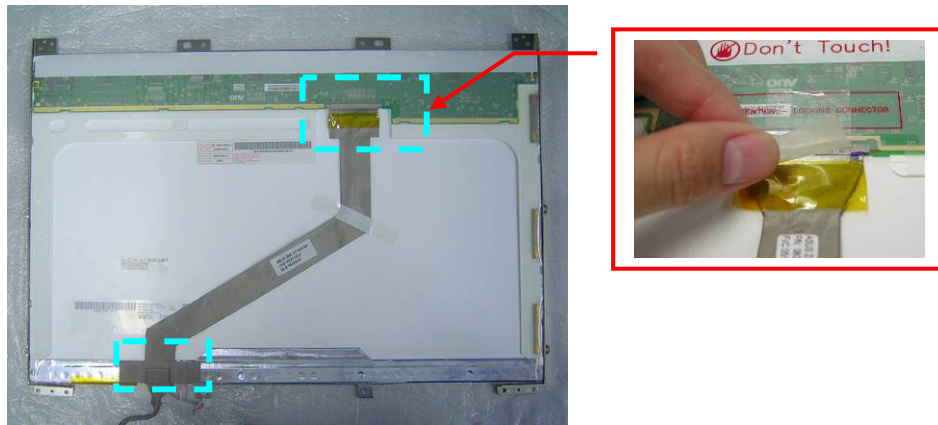
5. Remove 4 screws on the right LCD bracket to disassemble the LCD bracket.



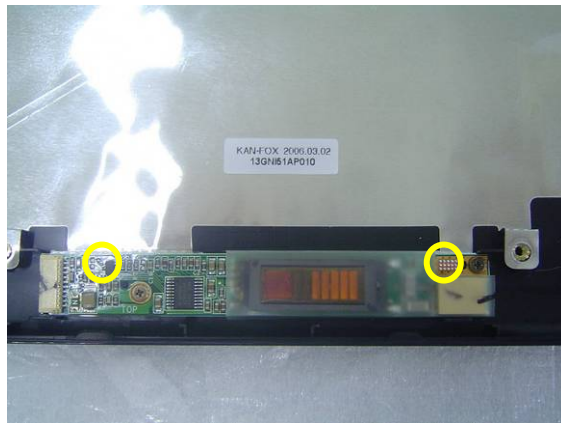
6. Remove 4 screws on the left LCD bracket to disassemble the other LCD bracket.



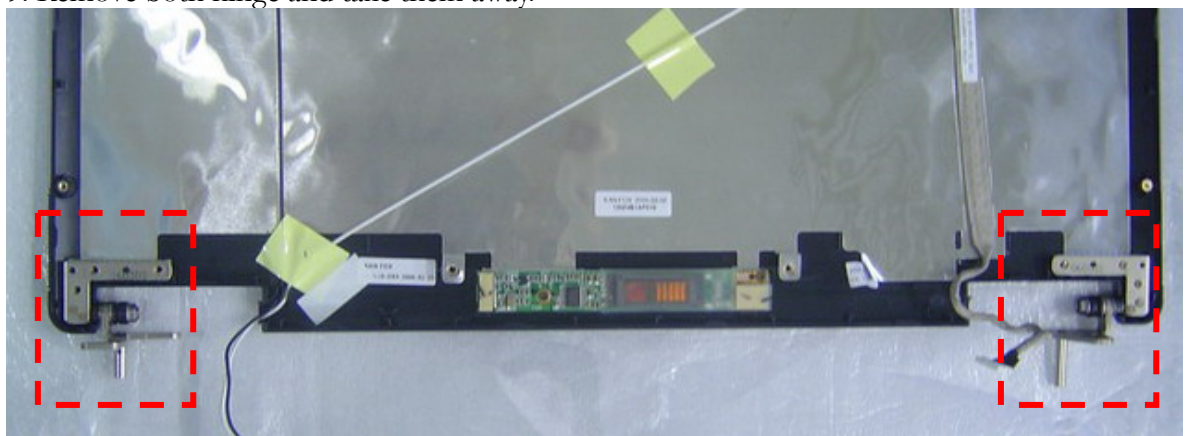
7. Remove 2 pieces of tapes and disconnect the coaxial cable then take it away.



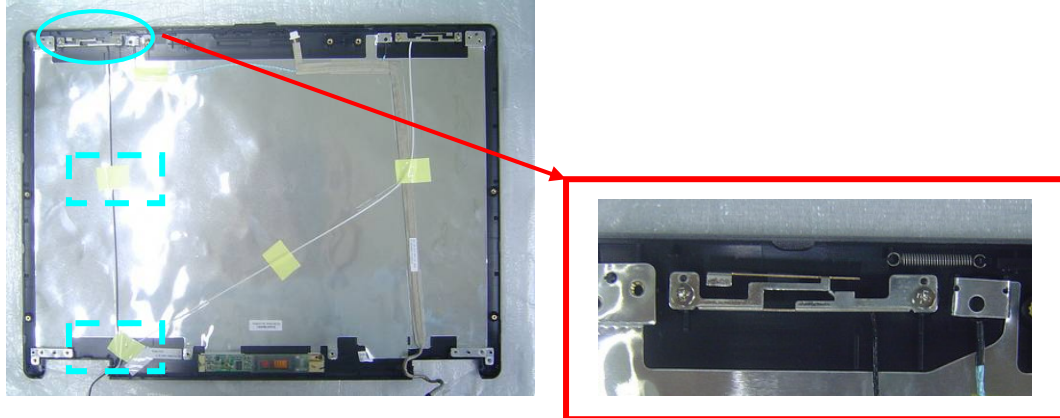
8. Remove 2 screw and then take inverter board away.



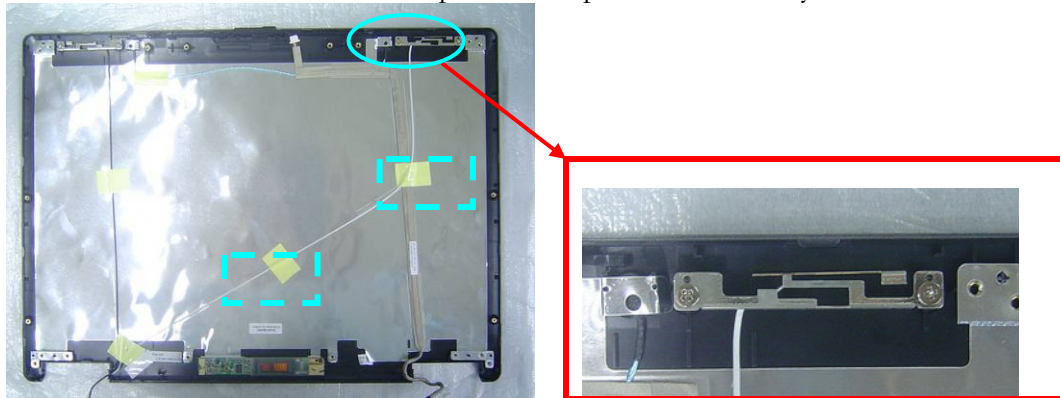
9. Remove both hinge and take them away.



10. Remove 2 screw and remove 2 pieces of tapes then take away the wireless black wire.



11. Remove 2 screw and remove 2 pieces of tapes then take away the wireless white wire.



12. Remove the microphone cable from the LCD cover.

