

Assembly Procedure

Please follow the information provided in this section to perform the complete assembly procedure of the notebook. Be sure to use proper tools described before.

After you have completed the previous chapter of complete disassembly, please follow this chapter to assemble the notebook back together. This chapter describes the procedures of the complete notebook assembly. In addition, in between procedures, the detailed assembly procedure of individual modules will be provided for your service needs.

The assembly procedure consists of the following steps:

- LCD Module
- Bottom case Module
- Motherboard Module
- Top Case Module
- Keyboard Module
- Optical Drive Module
- CPU Module
- Wireless Module
- Memory Module
- HDD Module
- Battery Module

LCD MODULE

LCD Module

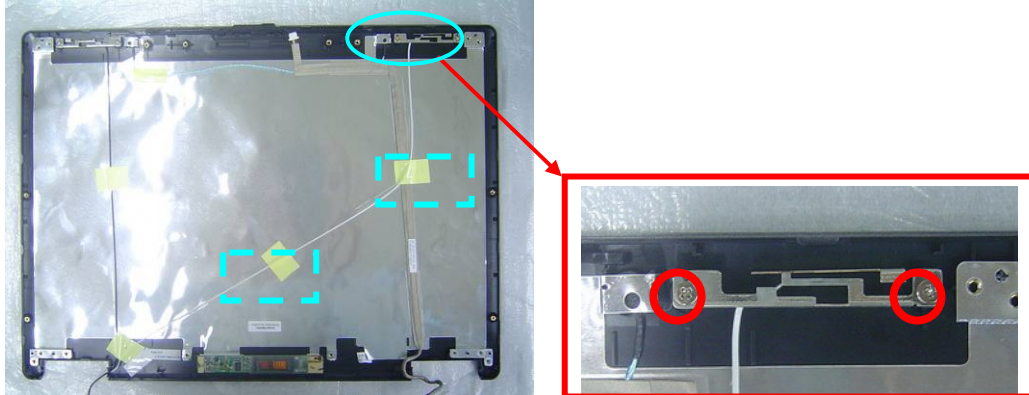
The illustrations below show how to assemble and install the LCD module of the notebook.

LCD MODULE
ASSEMBLY

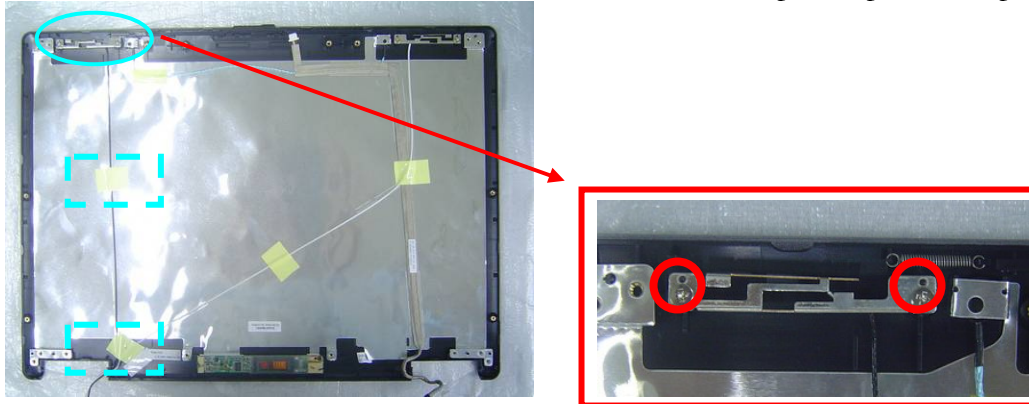
1. Install the microphone cable on the LCD cover



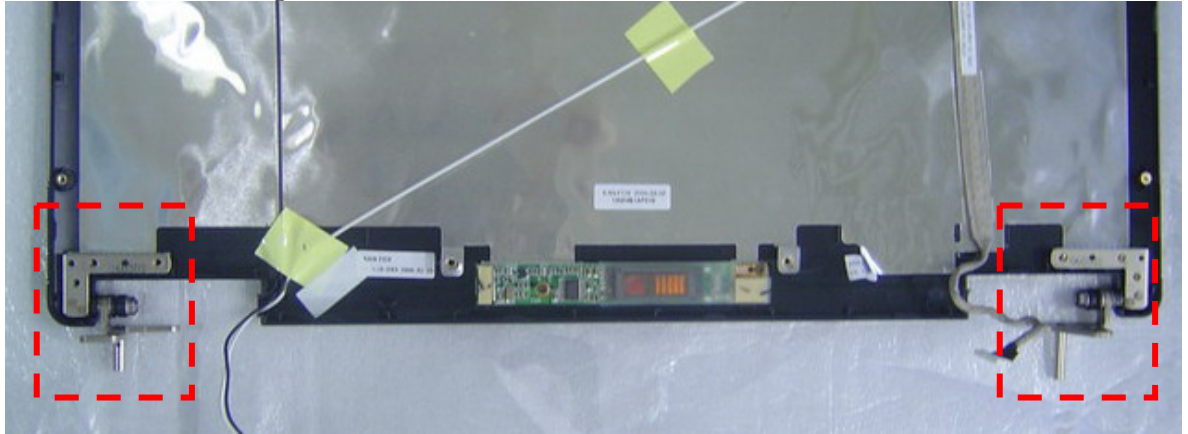
2. Install the wireless white wire module and secure 2 screws then paste 2 pieces of tapes to secure it.



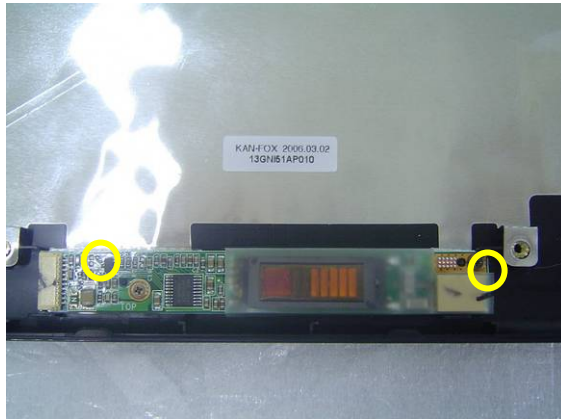
3. Install the wireless black wire module and secure 2 screws then paste 2 pieces of tapes to secure it.



4. Install the both hinge on LCD back cover.

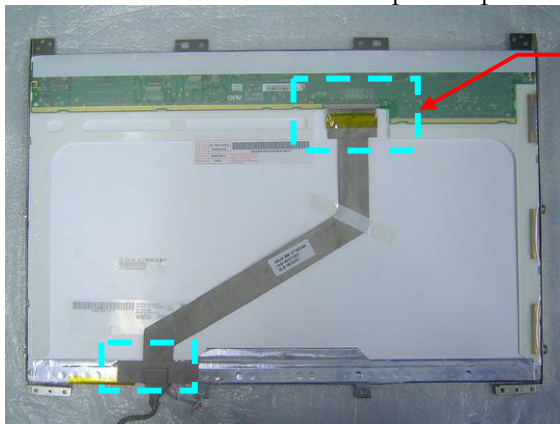


5. Install the inverter board on LCD back cover and then secure 2 screws to secure it.

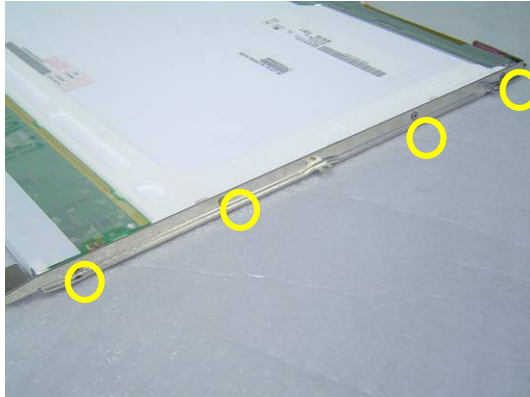


Assembly LCD Module

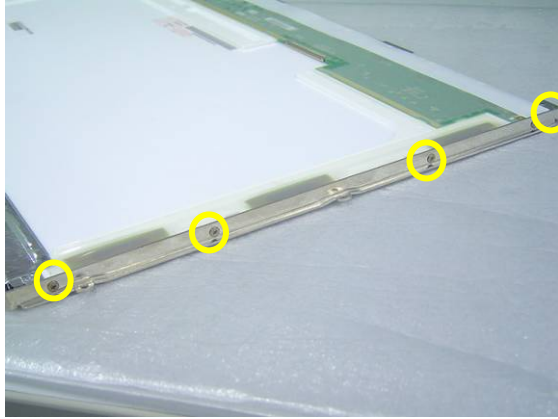
1. Connect the coaxial cable and paste 2 pieces of tapes to secure it.



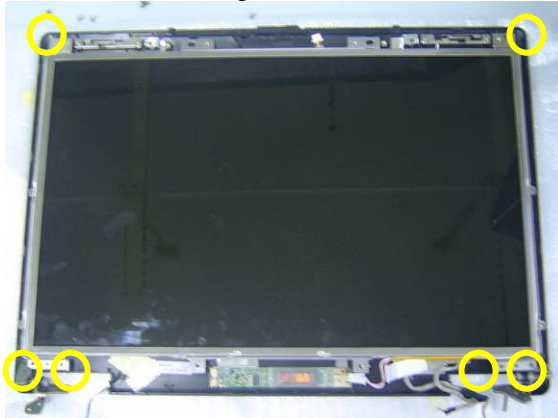
2. Install the left LCD bracket and secure 4 screws to fix it.



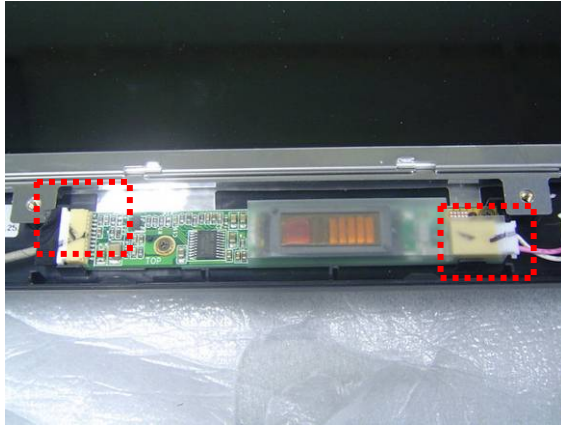
3. Install the right LCD bracket and secure 4 screws to fix it.



4. Install the LCD panel and secure 6 screws to secure it.



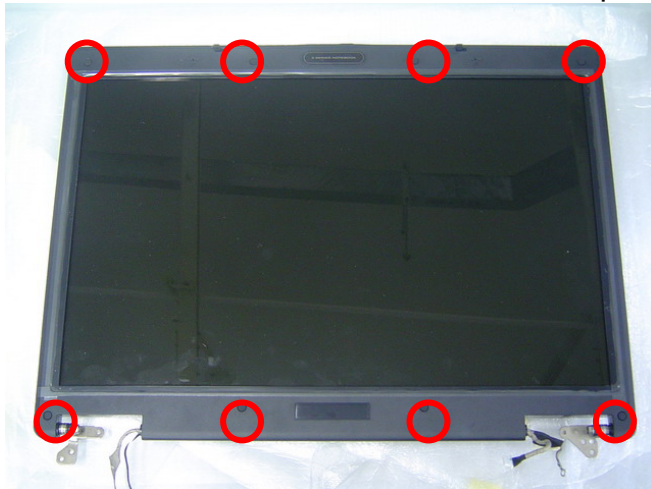
5. Connect the LCD cable. and inverter cable



6. Combine the LCD bezel and LCD Cover properly and press on all four edges until they snap into position.



7. Secure 8 screws on LCD front bezel then paste 7 rubber pads above.



BOTTOM
CASE
MODULE

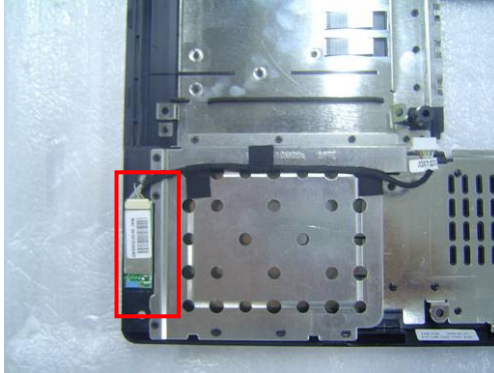
Bottom Case Module

The illustrations below show how to assembly the Bottom case module. The module contains Bluetooth board, speaker cable.

BOTTOM
CASE ASSEMBLY

Assembling Bottom case Module

1. Install the Bluetooth module on the bottom case.



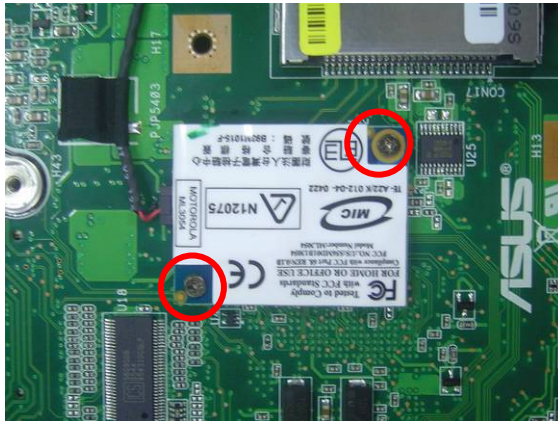
MOTHERBOARD

Motherboard

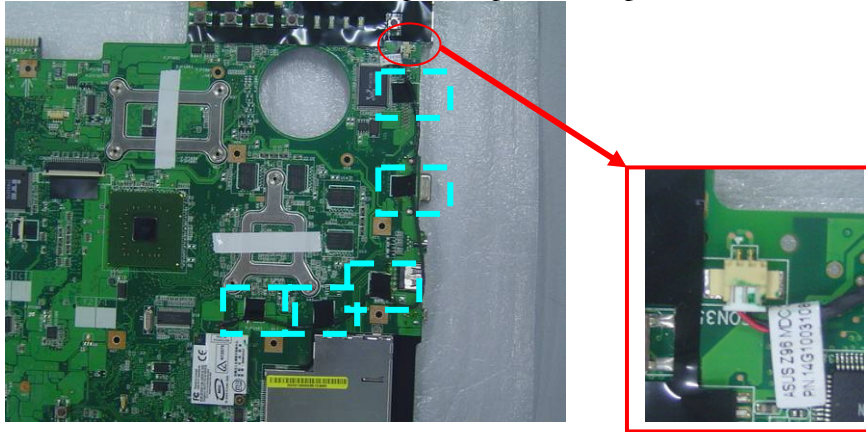
The illustrations below show how to assemble and install the motherboard of the notebook.

MOTHERBOARD
ASSEMBLY

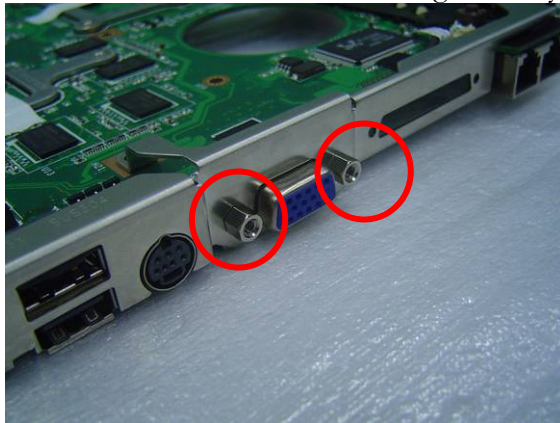
1. Install the modem board and secure 2 screws.



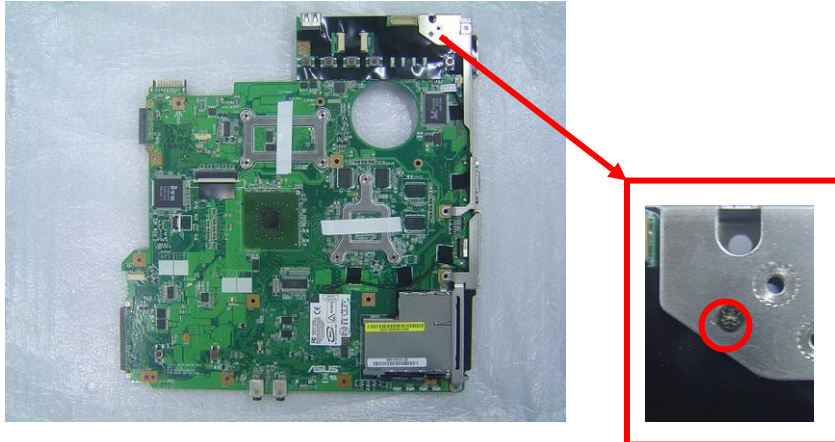
2. Connect the modem cable and paste 5 pieces of tape to fix the cable.



3. Secure 2 screws for CRT on the right side by a spacer screwdriver.



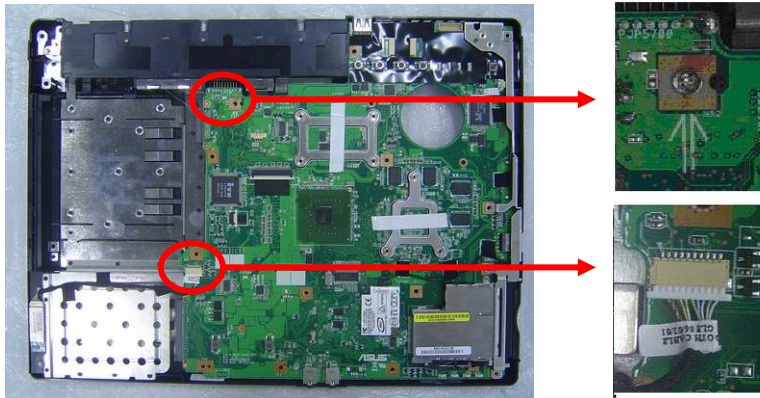
4. Secure 1 screw on the IO bracket to secure it.



5. Combine the Motherboard and the bottom case.



6. Secure 1 screw here and then connect the Bluetooth cables in the motherboard.



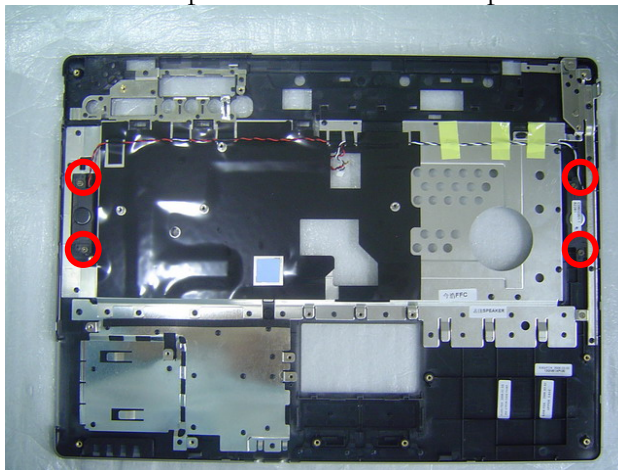
TOP CASE
MODULE

Top Case Module

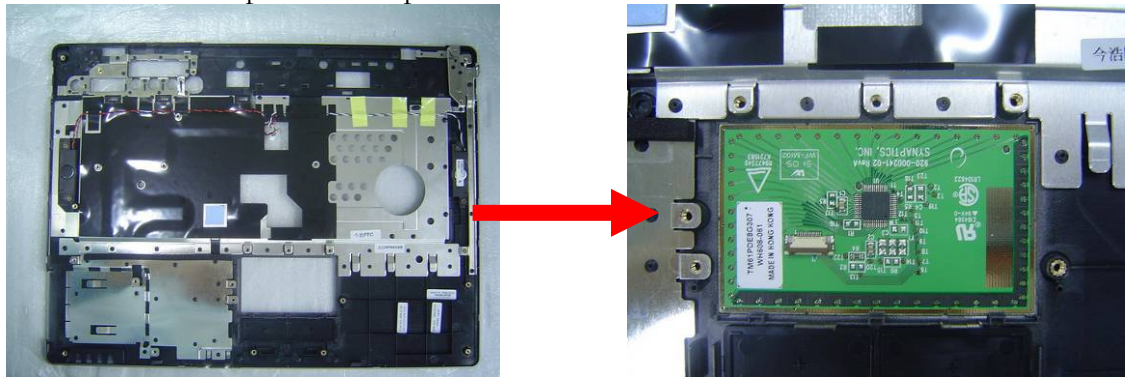
The illustrations below show how to assemble and install the top case module of the notebook.

1. Install the speaker module on the Top case Module and then secure 4 screws

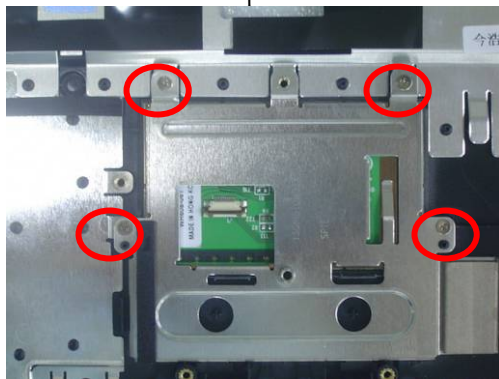
TOP
CASE
ASSEMBLY



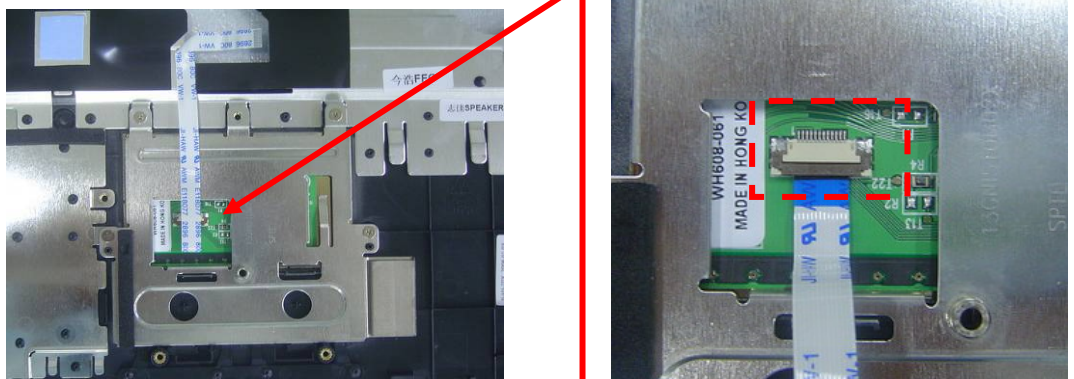
2. Install the touchpad on the top case.



3. Install the touchpad bracket and secure 4 screws to secure it.



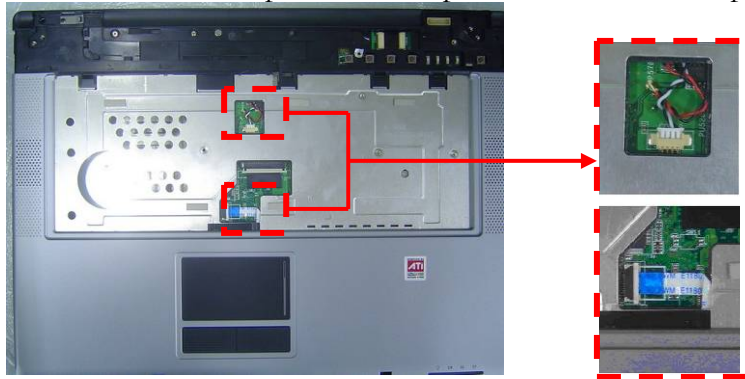
4. Connect the touch pad FPC



5. Combine the bottom case from the top case.

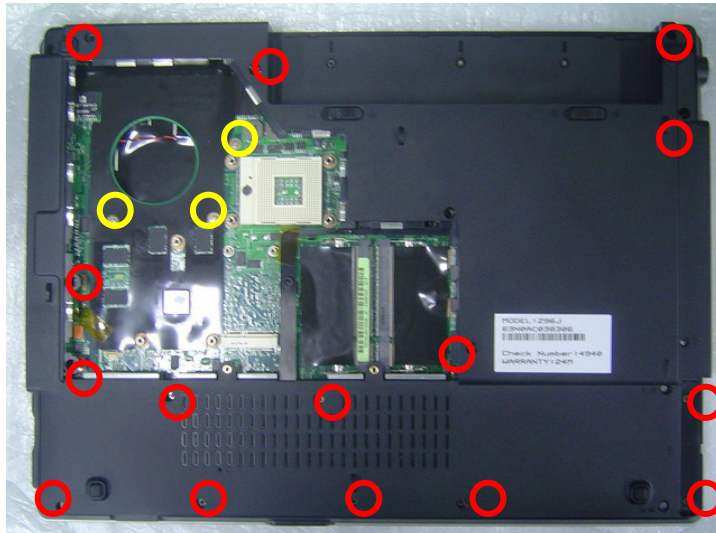


6. Connect the Touchpad FPC and Speaker cable from the top case.



BOTTOM CASE
ASSEMBLY

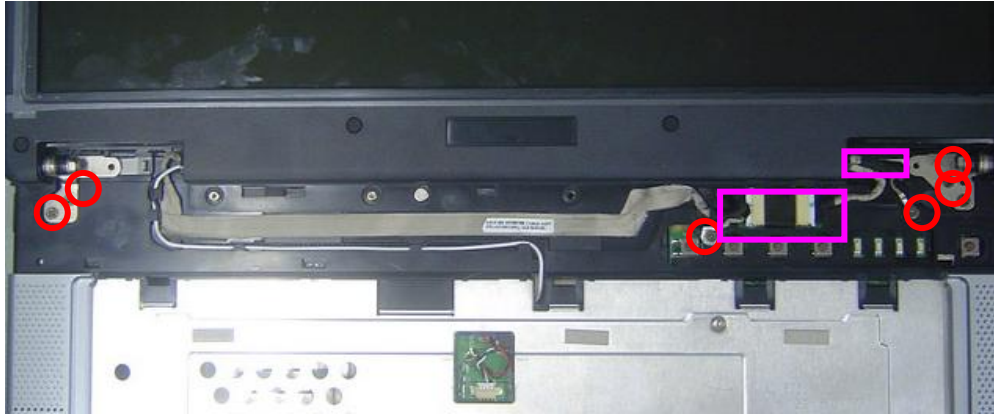
1. Turn over the NB and secure 18 screws on the bottom case.



2. Combine the Top case module and LCD module.



3. Secure 6 screws here, and then connect the Coaxial & inverter cable.



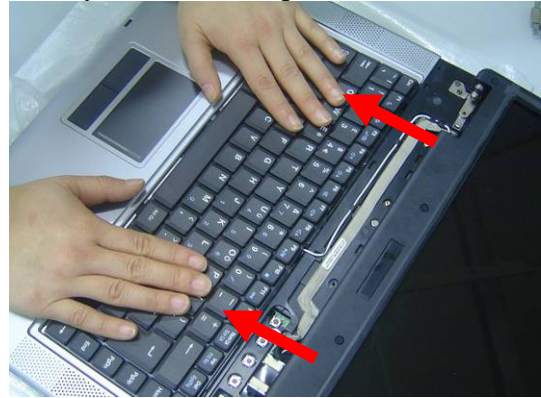
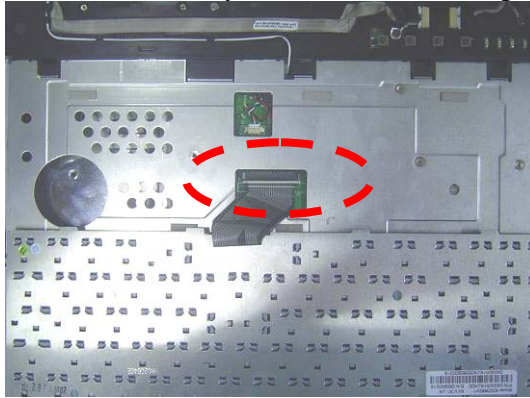
4. Turn over the notebook, and then secure 2 screws here.



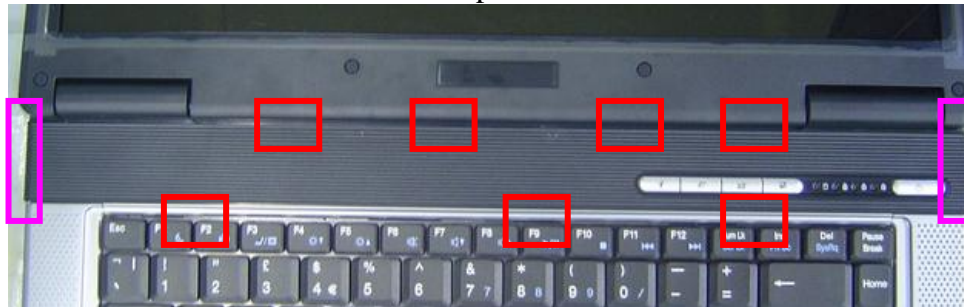
Assembling Keyboard

The illustrations below show how to assemble and install the Keyboard of the notebook.

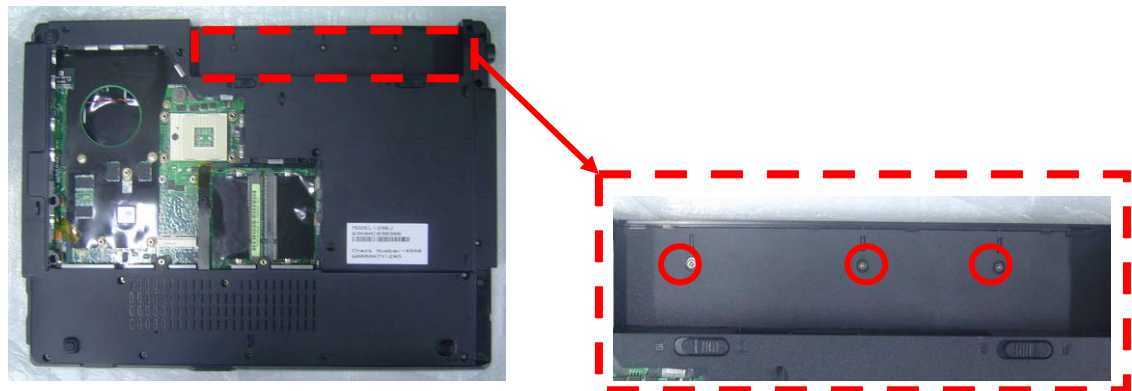
1. Connect the keyboard FPC cable and place the keyboard on the top case



2. Install the indicator cover on the top case .



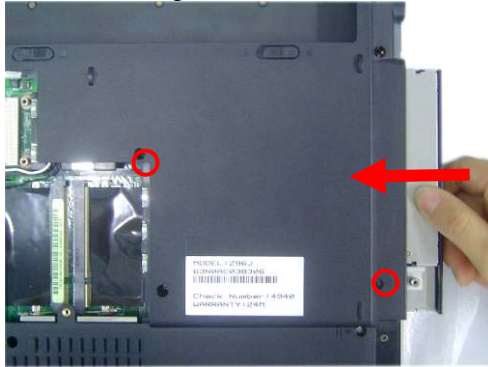
3. Turn over the notebook and then secure 3 screws here.



Optical Drive Module

The illustrations below show how to assemble and install the optical drive Module of the notebook.

1. Insert the optical drive module to its compartment and secure 2 screws to fix it.



CPU Module Assembly

The illustration below shows how to install CPU and the heat sink plate of the notebook.

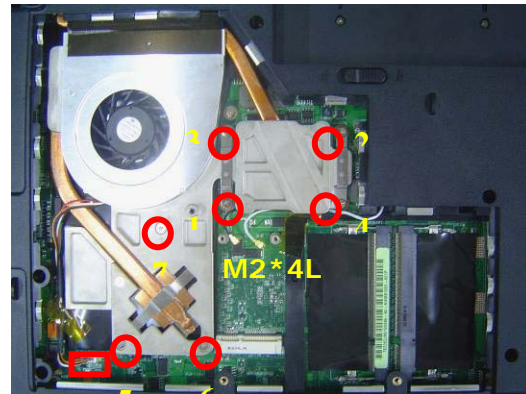
1. Use the CPU vacuum to “suck up” the CPU.



2. Install the CPU and use a single-slotted screwdriver to fix it.
-



3. Install the CPU heat sink module gently and secure 4 screws (M2*4L(K)) upon the CPU module, then connect the fan cable.



WLAN
MODULE

WLAN MODULE ASSEMBLY

The illustrations below show how to install the VGA Board module.

WLAN
MODULE
INSTALL

1. Insert the WLABN module and secure 2 screws to fix it



2. Connect the 2 antenna cables (black cable should be connected on main).

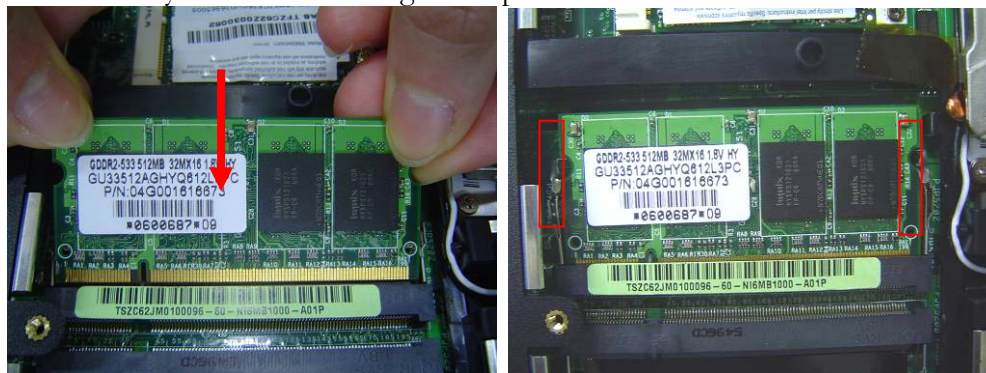


MEMORY
MODULE
INSTALL

Memory Module

The illustrations below show how to install the external Memory Module of the notebook.

1. Insert memory at the same 45° angles and press down until it clicks into the latches.



2. Put the CPU Module cover on then secure 3 screws to fix it.



HDD MODULE
INSTALL

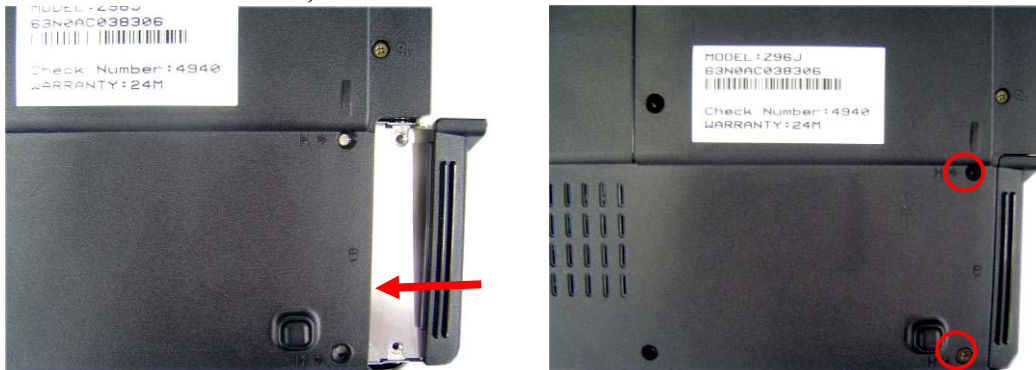
HDD Module

The illustrations below show how to assemble and install the HDD module of the notebook

1. Install HDD bracket and secure 4 screws to fix HDD and HDD housing.



2. Install the new HDD, and secure 2 screws to fix it.



BATTERY
MODULE

Battery Module

The illustrations below show how to install battery module of the notebook.

1. Put the battery module into its compartment.

