

Chapter

4

Upgrade & Replacement

Follow the individual procedures in this chapter to perform the notebook's upgrade and replacement of various major components.

Asus Z96J Series Notebook is a 2 spindles product, which means there are less options for you to upgrade to. The key upgradeable and replaceable items include the CPU module, memory module, HDD, ODD, and Wireless LAN module.

In order to avoid redundancy, please refer to chapters 2 and 3 of this manual for repeated and reused disassembly and assembly procedures, such as keyboard & heat sink replacement, which is used by several different procedures in this chapter. ***Be sure to follow the safety instructions described in Chapter 1 to safeguard the notebook against any potential damages.*** For any other components which you need to replace not covered in this chapter, please refer to Chapters 2 and 3 for detailed disassembly and assembly and perform necessary procedures accordingly.

This chapter includes the following items:

- CPU Upgrade
- Memory Upgrade
- HDD Upgrade
- ODD Replacement
- WLAN Replacement

CPU Upgrade

The Z96J Series Notebook comes standard with a Intel® Micro-FCPGA Socket on the motherboard, which means it can support all Intel Micro-FCPGA CPUs up to 2.1 GHz.

Upgrading CPU

Remove battery module

1. Turn the notebook over. Unlock and hold the latch, and remove the battery.



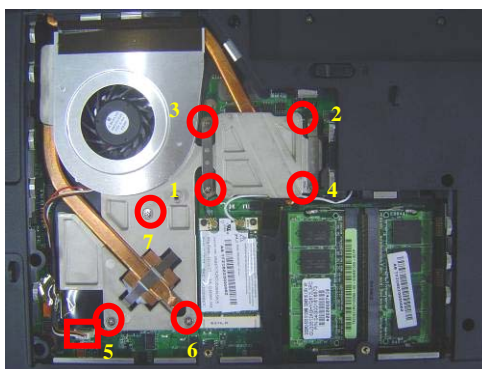
Replacement CPU

1. Remove 3 screws and take the CPU door away.

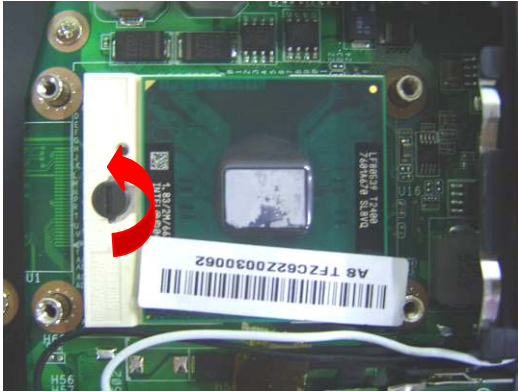


Remove Thermal module

1. Disconnect the FAN cable and remove 7 screws from 1 to 7, then take away the thermal module



2. Turn the non-removable screw here 180 degrees counter-clockwise to loosen the CPU.



3. Squeeze the vacuum handling pump and use it to lift the CPU away.

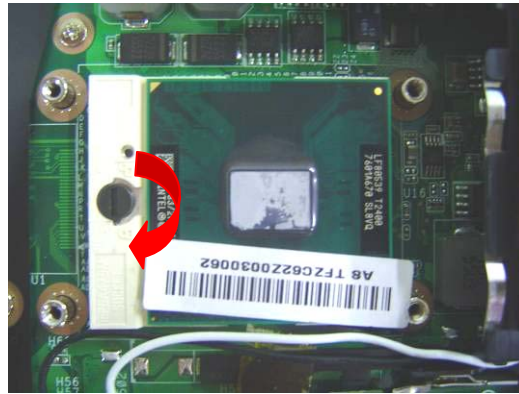


Installing CPU

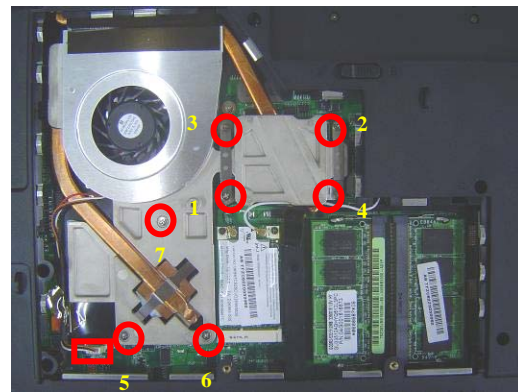
1. Use the CPU vacuum to “suck up” the CPU.



2. Install the CPU and use a single-slotted screwdriver to fix it.



3. Install the CPU heat sink module gently and secure 7 screws upon the CPU module, then connect the fan cable.



4. Put the CPU Module cover on then secure 3 screws to fix it.



Install battery module.

1. Put the battery module into its compartment.



MEMORY

Memory Upgrade

Upgrading Memory Module

Remove battery module

1. Turn the notebook over. Unlock and hold the latch, and remove the battery .

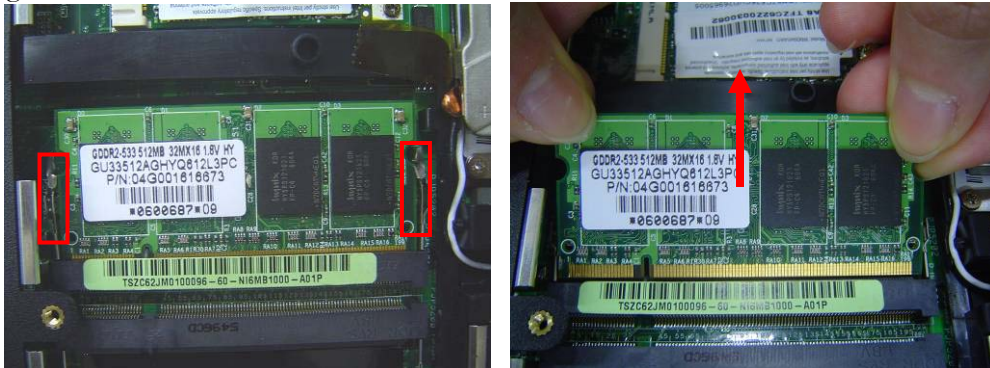


Replacement Memory module

1. Remove 3 screws and take the CPU door away.



2 latches and pop the module up to a 45° angles, and then pulling out the module in that angle.



Installing Memory Module

1. Insert memory at the same 45° angles and press down until it clicks into the latches.



2. Put the CPU Module cover on then secure 3 screws to fix it.



Install battery module

1. Put the battery module into its compartment.



HDD

HDD Module Replacement

Replacement HDD Module

Remove original HDD module

1. Remove 2 screws and take the HDD out.



2. Remove 4 screws to separate HDD from HDD housing

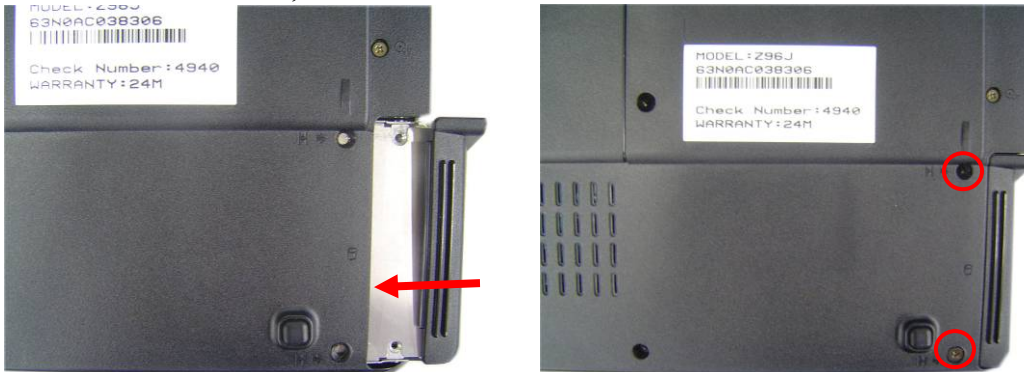


Install new HDD module.

1. Install HDD bracket and secure 4 screws to fix HDD and HDD housing.



2. Install the new HDD, and secure 2 screws to fix it.



ODD Module Replacement

Replacing ODD

Remove battery module

1. Turn the notebook over. Unlock and hold the latch, and remove the battery.



Replacement ODD

1. Remove 3 screws and take the CPU door away.

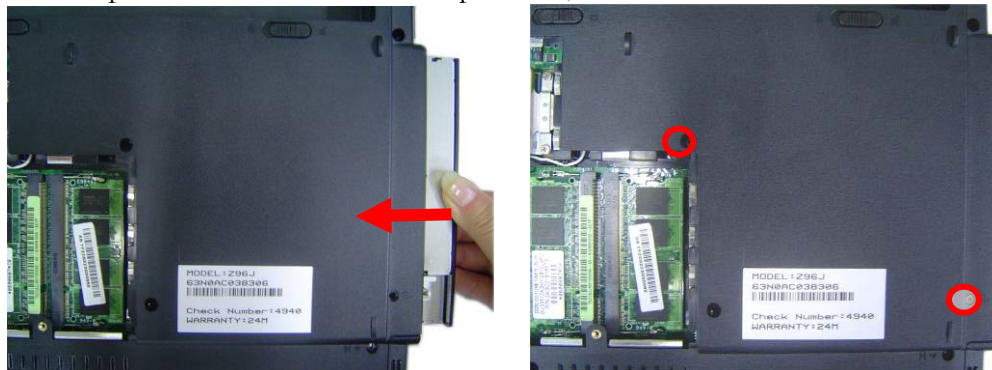


2. Remove 2 screws and Push the module out.



Install New ODD module

1. Insert the optical drive module to its compartment, and secure the 2 screws.



2. Put the CPU cover on and secure 3 screws (M2*4L(K)) to fix it.



Install battery module.

Put the battery module into its compartment.



WLAN

WLAN Module Replacement

This slot usually has Wireless LAN module when leaving the factory, this slot is for optional system upgrade.

Replacing WLAN module

Remove battery module

2. Turn the notebook over. Unlock and hold the latch, and remove the battery .



Replacement WLAN

2. Remove 3 screws and take the CPU door away.



1. Remove 2 Antenna cables from Wireless LAN Module

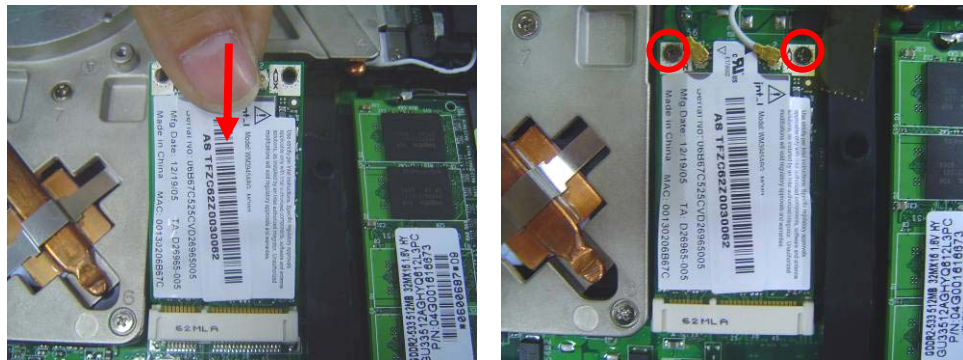


2. Remove 2 screws, then take the WLAN module away.



Installing Wireless LAN Module

3. Insert the WLAN module and secure 2 screws to fix it



4. Connect the 2 antenna cables (black cable should be connected on main).



5. Put the CPU cover on and secure 3 screws to fix it.



Install battery module.

Put the battery module into its compartment.

