

Parts Catalog

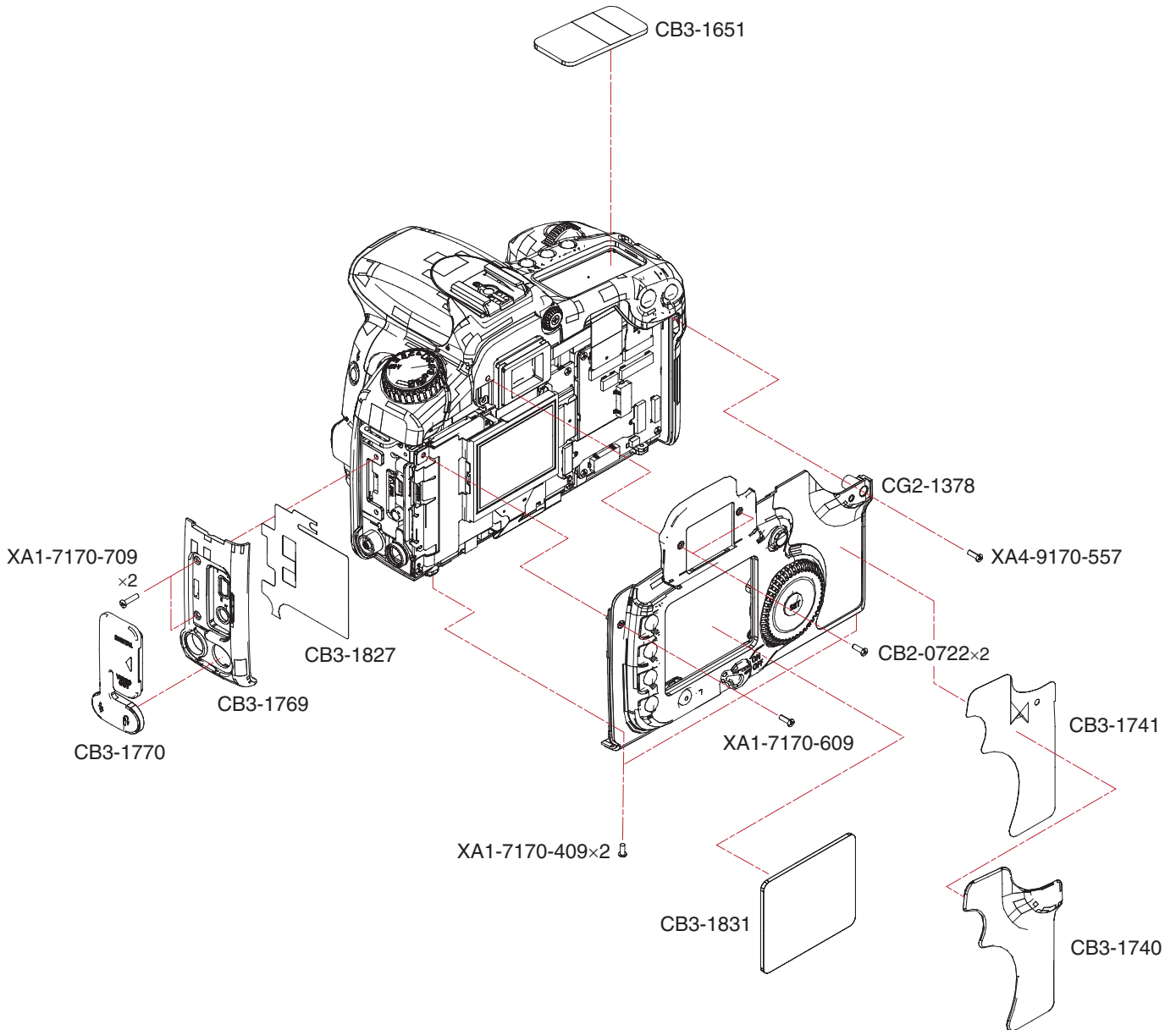
Canon

EOS 20D

REF.No. C12-6061

**PARTS
CATALOG**

CANON DIGITAL CAMERA EOS 20D

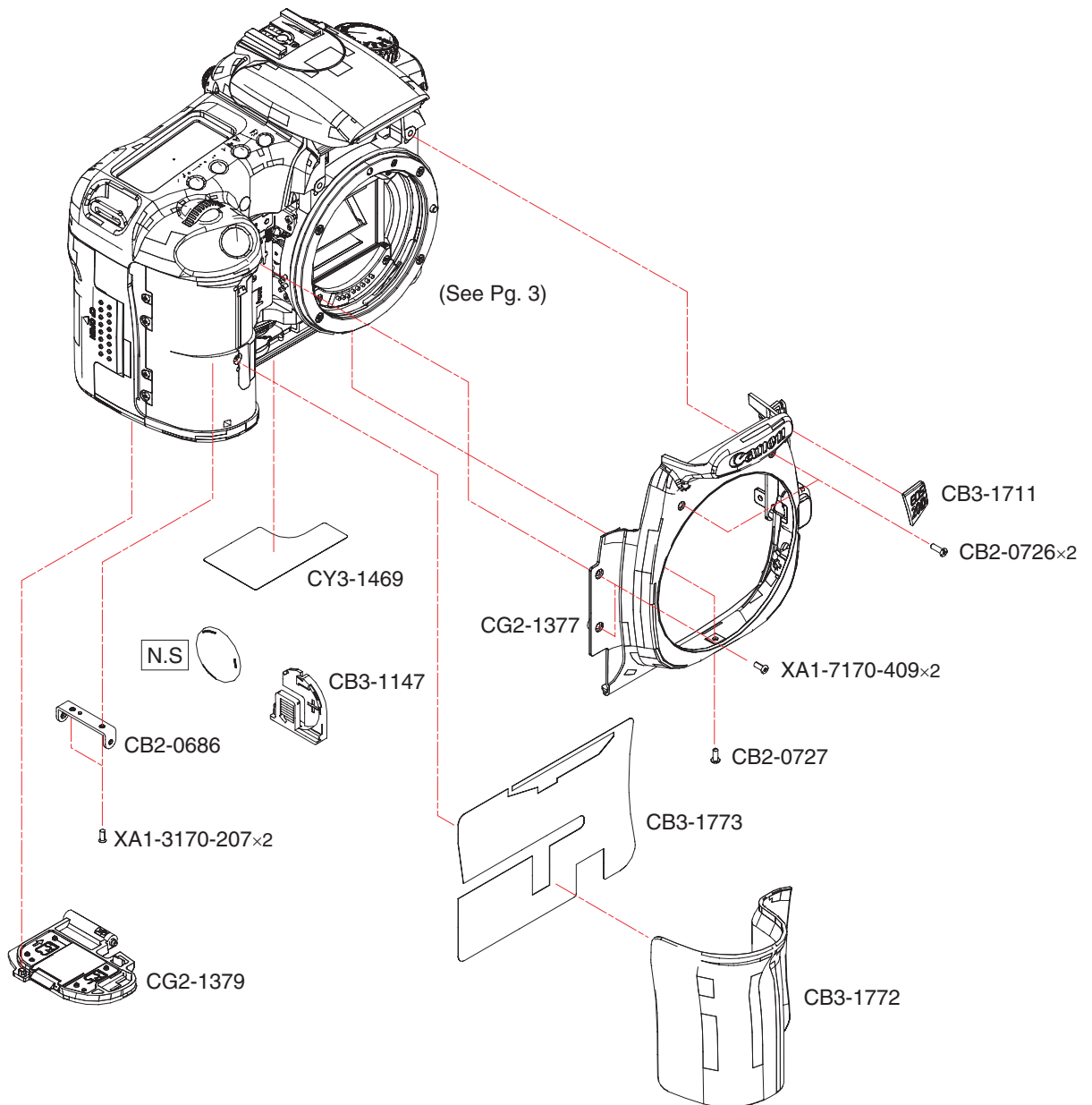


PARTS LIST

REF.NO. C12-6061

NEW	PARTS No.	CLASS	QTY	DESCRIPTION
	CB2-0722-000 000	F	2	SCREW
*	CB3-1651-000 000	A	1	WINDOW, DISPLAY
*	CB3-1740-000 000	B	1	COVER, HOLDING
*	CB3-1741-000 000	B	1	TAPE, DOUBLE SIDE
*	CB3-1769-000 000	B	1	COVER, INTERFACE
*	CB3-1770-000 000	B	1	CAP, INTERFACE
*	CB3-1827-000 000	C	1	TAPE, D PCB CONDUCTIVE
*	CB3-1831-000 000	A	1	WINDOW, TFT DISPLAY
*	CG2-1378-000 000	B	1	COVER ASS'Y, BACK
	XA1-7170-409 000		2	SCREW
	XA1-7170-609 000		1	SCREW
	XA1-7170-709 000		2	SCREW
	XA4-9170-557 000		1	SCREW

CANON DIGITAL CAMERA EOS 20D

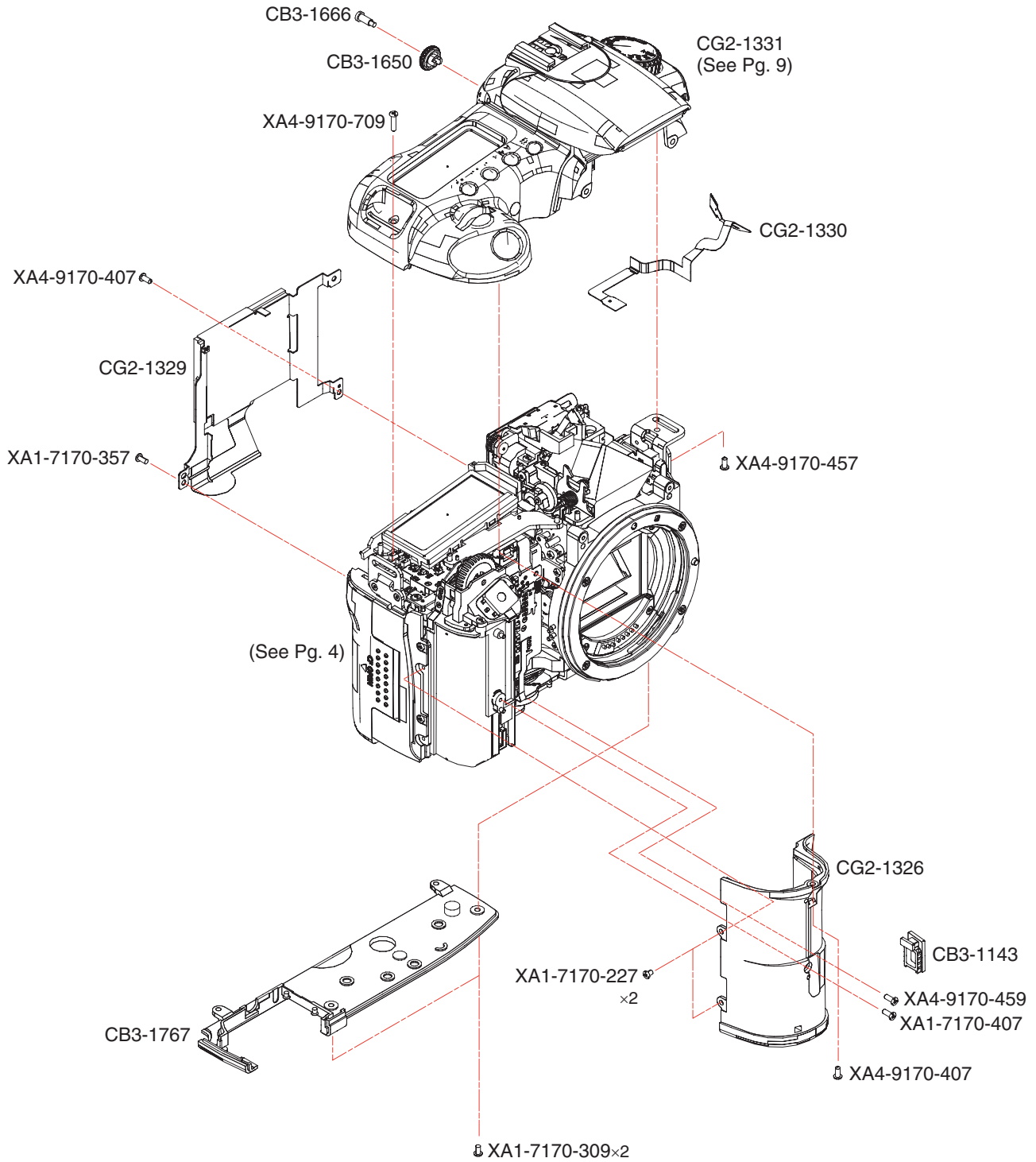


PARTS LIST

REF.NO. C12-6061

NEW	PARTS No.	CLASS	QTY	DESCRIPTION
	CB2-0686-000 000	C	1	HINGE, B-DOOR
	CB2-0726-000 000		2	SCREW
	CB2-0727-000 000		1	SCREW
	CB3-1147-000 000	C	1	CASE, BATTERY
*	CB3-1711-000 000	B	1	PLATE, NAME
*	CB3-1772-000 000	B	1	COVER, GRIP HOLDING
*	CB3-1773-000 000	B	1	TAPE, DOUBLE SIDE
*	CG2-1377-000 000	B	1	COVER ASS'Y, FRONT
*	CG2-1379-000 000	B	1	COVER ASS'Y, BATTERY
*	CY3-1469-000 000	C	1	LABEL, BODY NUMBER
	XA1-3170-207 000		2	SCREW
	XA1-7170-409 000		2	SCREW

CANON DIGITAL CAMERA EOS 20D

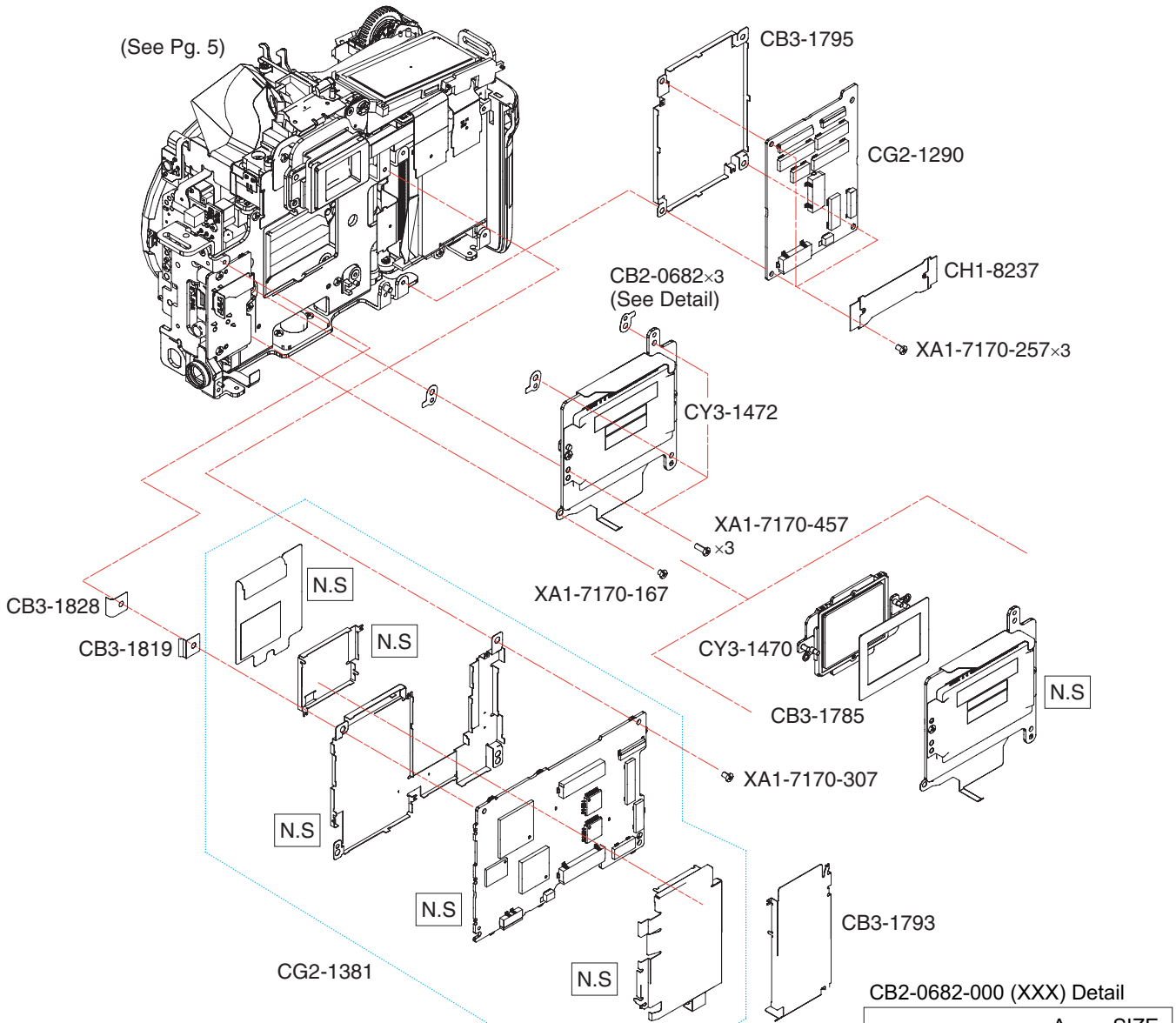


PARTS LIST

REF.NO. C12-6061

NEW	PARTS No.	CLASS	QTY	DESCRIPTION
	CB3-1143-000 000	C	1	DOOR, CABLE
*	CB3-1650-000 000	B	1	DIAL, DIOPTER CORRECTION
	CB3-1666-000 000		1	SCREW
*	CB3-1767-000 000	B	1	COVER, BOTTOM
*	CG2-1326-000 000	B	1	GRIP ASS'Y
*	CG2-1329-000 000	B	1	LCD ASS'Y, TFT
*	CG2-1330-000 000	C	1	FPC ASS'Y, SUPER IMPOSE
*	CG2-1331-000 000	A	1	COVER, ASS'Y, TOP
	XA1-7170-227 000		2	SCREW
	XA1-7170-309 000		2	SCREW
	XA1-7170-357 000		1	SCREW
	XA1-7170-407 000		1	SCREW
	XA4-9170-407 000		2	SCREW
	XA4-9170-457 000		1	SCREW
	XA4-9170-459 000		1	SCREW
	XA4-9170-709 000		1	SCREW

CANON DIGITAL CAMERA EOS 20D



CB2-0682-000 (XXX) Detail

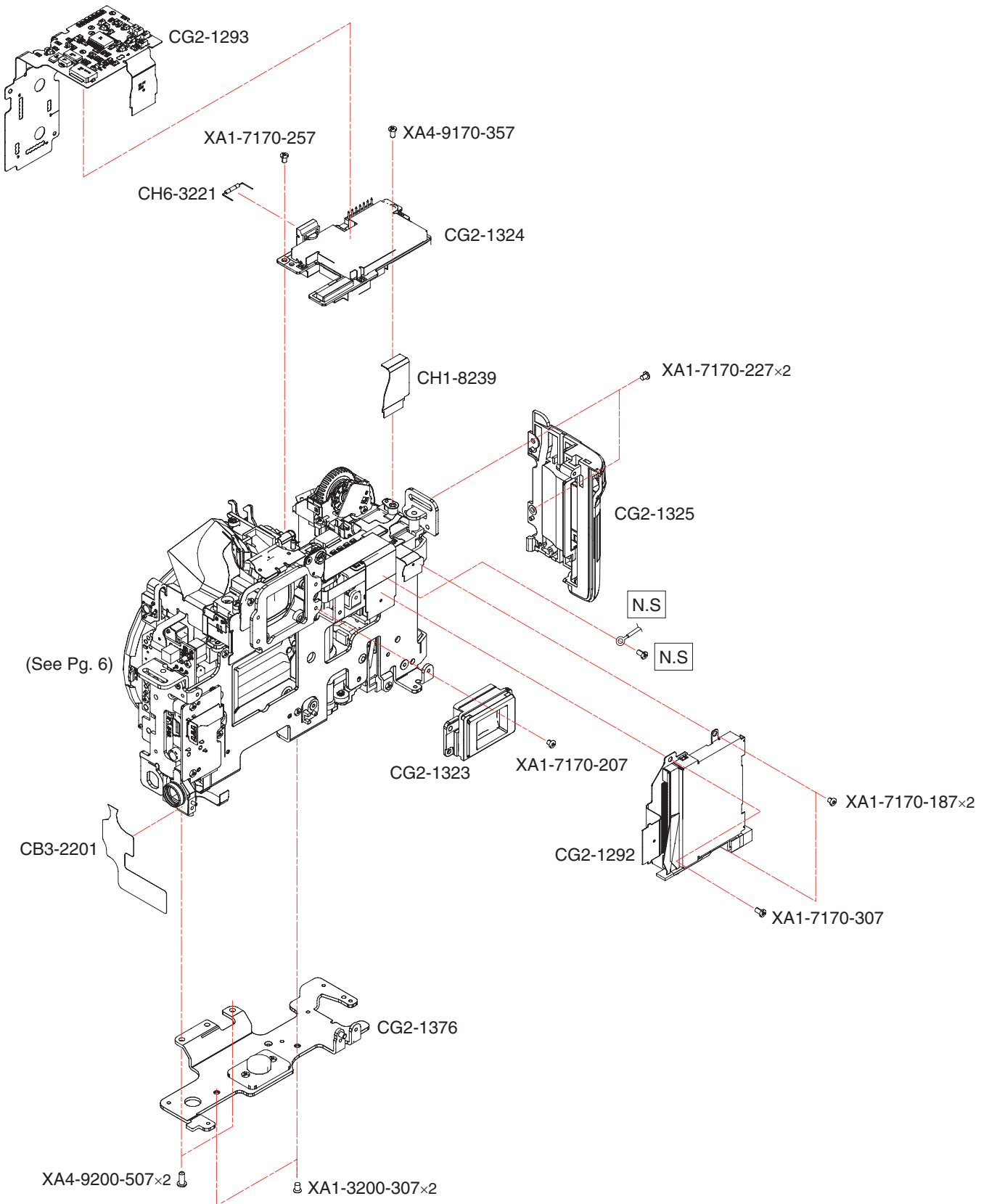
	A	SIZE
	0.03mm	(003)
	0.05mm	(005)
	0.08mm	(008)
	0.10mm	(010)
	0.12mm	(012)
	0.15mm	(015)
	0.18mm	(018)
	0.20mm	(020)
	0.25mm	(025)
	0.30mm	(030)
	0.35mm	(035)

PARTS LIST

REF.NO. C12-6061

NEW	PARTS No.	CLASS	QTY	DESCRIPTION
	CB2-0682-000 (XXX)	C	3	WASHER, FLANGE BACK
*	CB3-1785-000 000	C	1	TAPE, LOW PASS FILTER
*	CB3-1793-000 000	N	1	COVER, DIGITAL PCB SHIELD
*	CB3-1795-000 000	C	1	COVER, C PCB SHIELD
*	CB3-1819-000 000	C	1	TAPE, DIGITAL PCB SHIELD
*	CB3-1828-000 000	C	1	TAPE, DIGITAL PCB SHIELD
*	CG2-1290-000 000	B	1	PCB ASS'Y, C
*	CG2-1381-000 000	A	1	PCB ASS'Y, DIGITAL
*	CH1-8237-000 000	C	1	FPC, CD CONNECT
*	CY3-1470-000 000	B	1	FILTER ASS'Y, LOW PASS
*	CY3-1472-000 000	A	1	PCB ASS'Y, IMAGING PROCESSING
	XA1-7170-167 000		1	SCREW
	XA1-7170-257 000		3	SCREW
	XA1-7170-307 000		1	SCREW
	XA1-7170-457 000		3	SCREW

CANON DIGITAL CAMERA EOS 20D

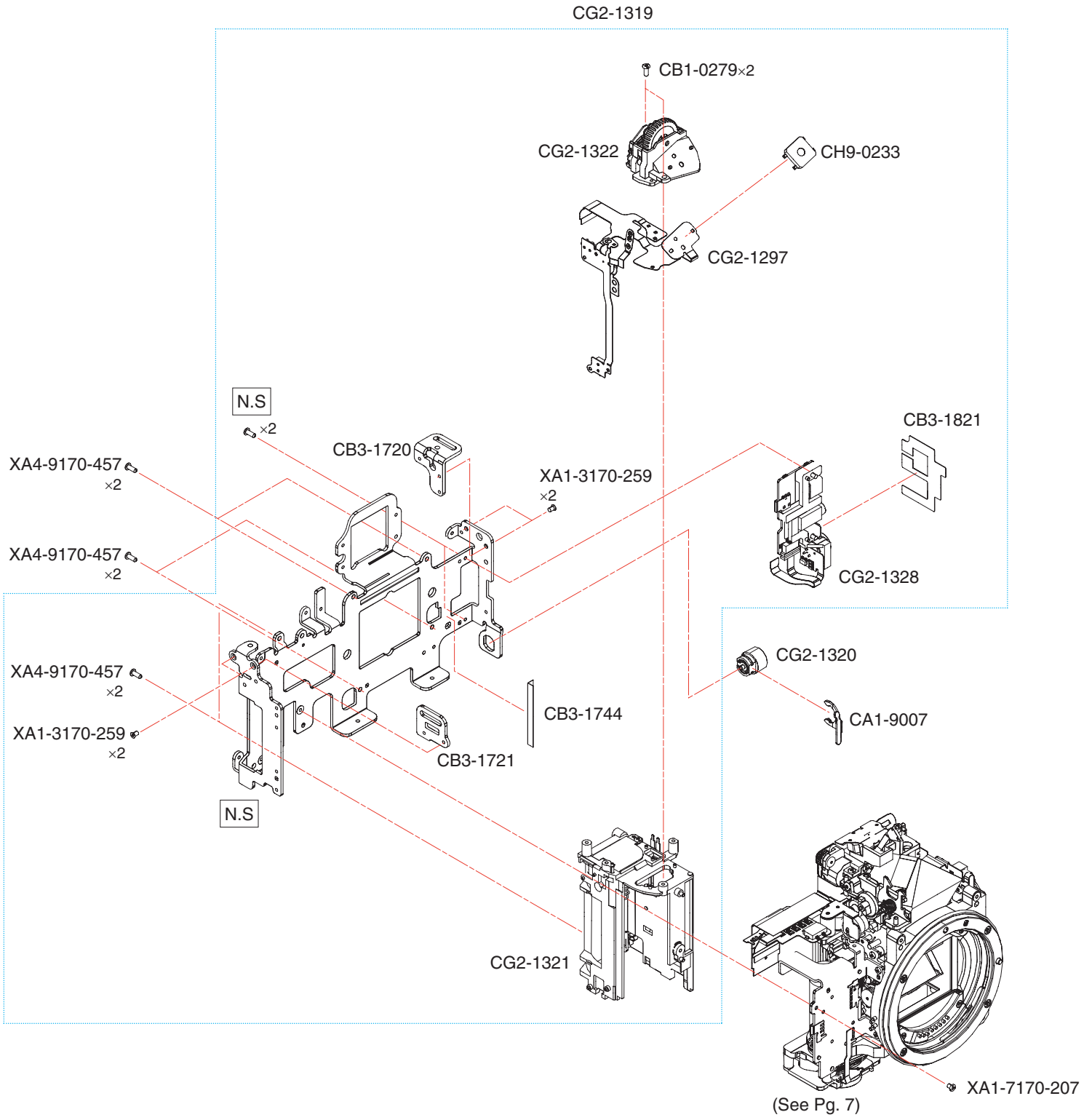


PARTS LIST

REF.NO. C12-6061

NEW	PARTS No.	CLASS	QTY	DESCRIPTION
*	CB3-2201-000 000	C	1	TAPE, BOTTOM CONDUCTIVE
*	CG2-1292-000 000	B	1	PIN ASS'Y, CF SLOT
*	CG2-1293-000 000	B	1	FPC ASS'Y, MOTOR DRIVE
*	CG2-1323-000 000	B	1	COVER ASS'Y, EYEPIECE
*	CG2-1324-000 000	A	1	PCB ASS'Y, DC/DC
*	CG2-1325-000 000	C	1	COVER ASS'Y, CF SLOT
*	CG2-1376-000 000	C	1	PLATE ASS'Y, BASE
*	CH1-8239-000 000	C	1	FPC, DCDC D CONNECT
	CH6-3221-000 000	C	1	LAMP, HALOGEN
	XA1-3200-307 000		2	SCREW
	XA1-7170-187 000		2	SCREW
	XA1-7170-207 000		1	SCREW
	XA1-7170-227 000		2	SCREW
	XA1-7170-257 000		1	SCREW
	XA1-7170-307 000		1	SCREW
	XA4-9170-357 000		1	SCREW
	XA4-9200-507 000		2	SCREW

CANON DIGITAL CAMERA EOS 20D

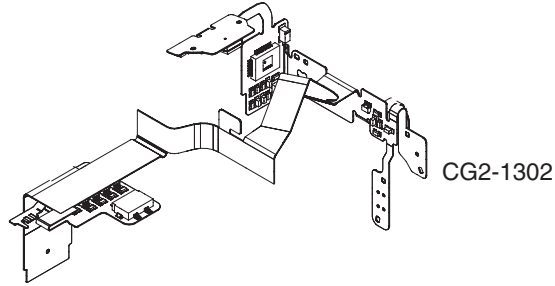


PARTS LIST

REF.NO. C12-6061

NEW	PARTS No.	CLASS	QTY	DESCRIPTION
	CA1-9007-000 000		1	
	CB1-0279-000 000		2	SCREW
*	CB3-1720-000 000	C	1	HOLDER, STRAP, LEFT
*	CB3-1721-000 000	C	1	HOLDER, STRAP, RIGHT
*	CB3-1744-000 000	C	1	PLATE, LIGHT SHIELD
*	CB3-1821-000 000	B	1	TAPE, INTERFACE SHIELD
*	CG2-1297-000 000	B	1	FLEX ASS'Y, RELEASE
*	CG2-1319-000 000	C	1	PLATE ASS'Y, MAIN BASE
*	CG2-1320-000 000	B	1	TERMINAL ASS'Y, PC
*	CG2-1321-000 000	C	1	BOX ASS'Y, BATTERY
*	CG2-1322-000 000	C	1	DIAL ASS'Y
*	CG2-1328-000 000	B	1	PCB ASS'Y, INTERFACE
	CH9-0233-000 000	C	1	SWITCH, RELEASE
	XA1-3170-259 000		4	SCREW
	XA1-7170-207 000		1	SCREW
	XA4-9170-457 000		6	SCREW

CANON DIGITAL CAMERA EOS 20D



XA4-9170-457
×2

XA4-9170-459
×2

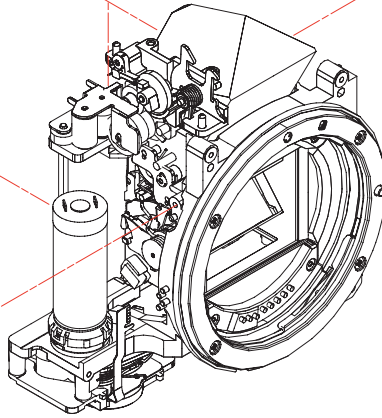
XA4-9170-309

CG2-1317

CG2-1316

XA4-9170-457
×2

CH9-1071



CB3-2139

CB3-1719

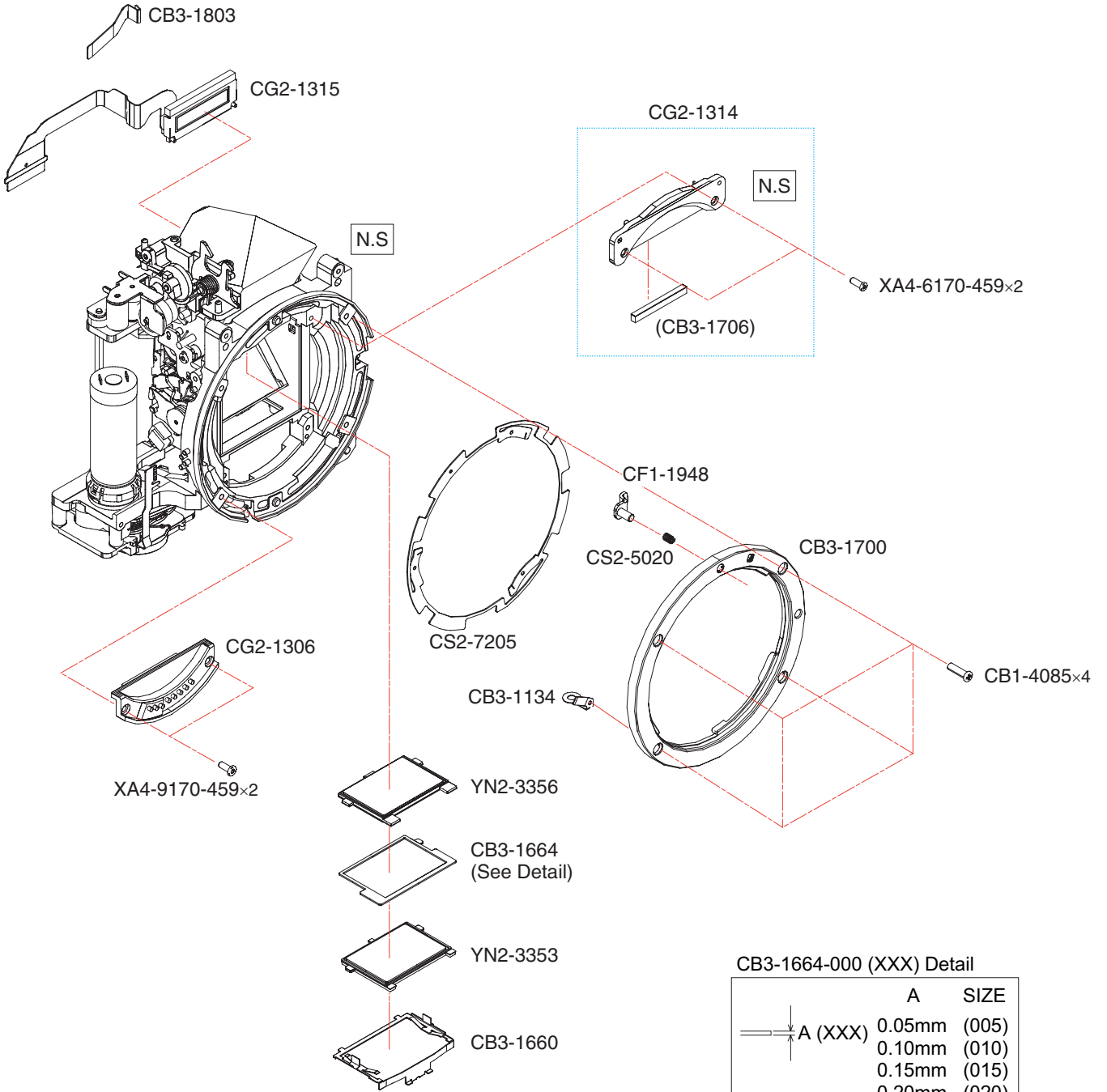
XA4-9170-457
×2

PARTS LIST

REF.NO. C12-6061

NEW	PARTS No.	CLASS	QTY	DESCRIPTION
*	CB3-1719-000 000	C	1	PLATE, WING
	CB3-2139-000 000		1	
*	CG2-1302-000 000	B	1	FPC ASS'Y, EXPOSURE PROCESSING
*	CG2-1316-000 000	B	1	EYEPIECE ASS'Y
*	CG2-1317-000 000	A	1	SHUTTER ASS'Y
*	CH9-1071-000 000	B	1	PCB ASS'Y, FLASH
*	CY3-1473-000 000	B	1	MIRROR BOX ASS'Y
	XA4-9170-309 000		1	SCREW
	XA4-9170-457 000		6	SCREW
	XA4-9170-459 000		2	SCREW

CANON DIGITAL CAMERA EOS 20D



CB3-1664-000 (XXX) Detail

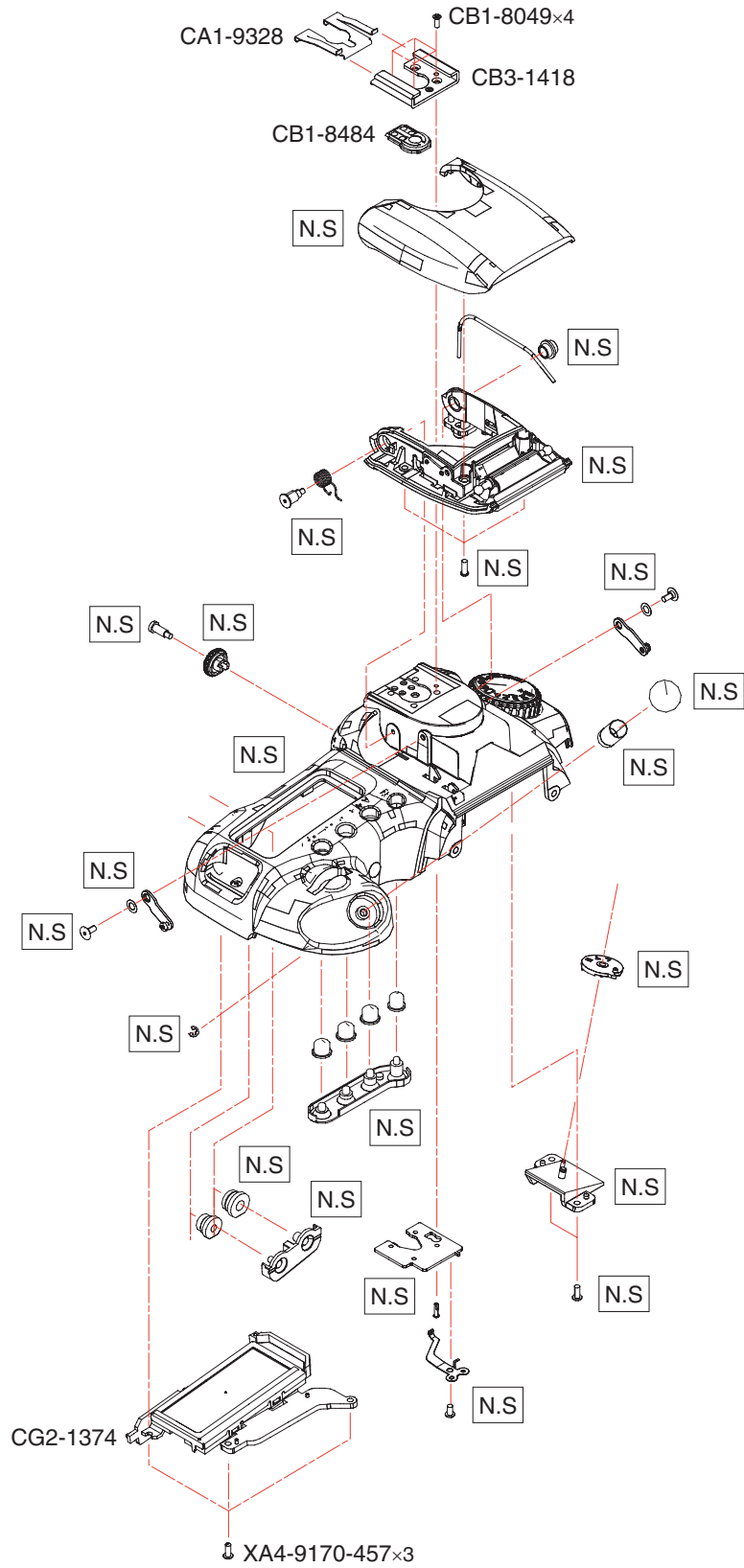
	A	SIZE
	0.05mm	(005)
	0.10mm	(010)
	0.15mm	(015)
	0.20mm	(020)
	0.25mm	(025)
	0.30mm	(030)
	0.35mm	(035)
	0.40mm	(040)
	0.45mm	(045)
	0.50mm	(050)

PARTS LIST

REF.NO. C12-6061

NEW	PARTS No.	CLASS	QTY	DESCRIPTION
	CB1-4085-000 000		4	SCREW
*	CB3-1134-000 000	C	1	PLATE, GRAND
*	CB3-1660-000 000	C	1	FRAME, SCREEN MOUNTING
*	CB3-1664-000 (XXX)	C	1	WASHER, FINDER BACK ADJUST
*	CB3-1700-000 000	C	1	MOUNT
* *	CB3-1706-000 000 CB3-1803-000 000	C C	1 1	CUSHION, MIRROR COVER, INNER LCD RETAINER
	CF1-1948-000 000	C	1	LEVER, LENS LOCK
*	CG2-1306-000 000	C	1	CONTACT ASS'Y, LENS
*	CG2-1314-000 000	C	1	COVER ASS'Y, SCREEN RETAINER
* * * * *	CG2-1315-000 000 CS2-5020-000 000 CS2-7205-000 000 XA4-6170-459 000 XA4-9170-459 000	C C C	1 1 1 2 2	FPC ASS'Y, INNER LCD SPRING, COIL SPRING, MOUNT SCREW SCREW
*	YN2-3353-000 000	B	1	PLATE, FOCUSING SCREEN
*	YN2-3356-000 000	B	1	PLATE, SUPER IMPOSE INDICATE

CANON DIGITAL CAMERA EOS 20D



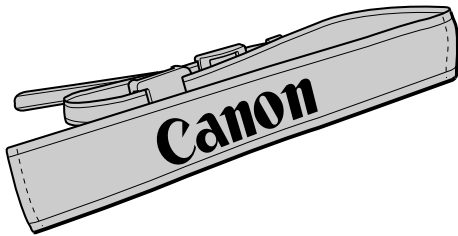
PARTS LIST

REF.NO. C12-6061

NEW	PARTS No.	CLASS	QTY	DESCRIPTION
	CA1-9328-000 000	C	1	PLATE, SPRING, BL
	CB1-8049-000 000	F	4	SCREW
	CB1-8484-000 000	E	1	BASE , ACCESSORY, SHOE
	CB3-1418-000 000	C	1	SHOE, ACCESSORY
*	CG2-1374-000 000	C	1	LCD ASS'Y, OUTER
	XA4-9170-457 000	F	3	SCREW

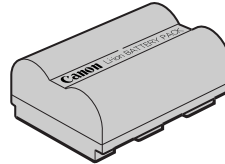
Accessories

Wide Strap EW-100DGR



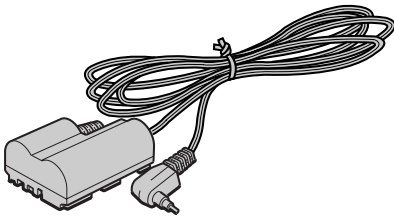
N.S (Product Available)

**Battery Pack BP-511/511A
BP-512**



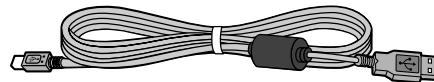
N.S (Product Available)

DC Coupler DR-400



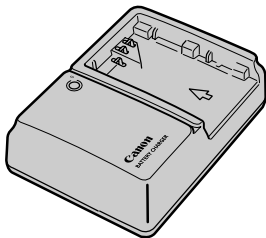
N.S (Product Available)

**Interface Cable
IFC-400 PCU(USB)**



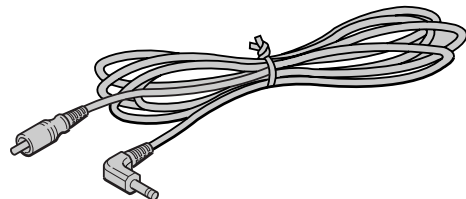
N.S (Product Available)

Battery Charger CG-580



N.S (Product Available)

Video Cable VC-100



FH6-3922

VIDEO CABLE VC-100

REF.NO. FH-3922

NEW	PARTS No.	CLASS	QTY	DESCRIPTION
	FH6-3922-000 000	C	1	VIDEO CABLE VC-100

ELECTRIC PARTS LIST

REF.NO. C12-6061

NEW	PARTS No.	CLASS	QTY	DESCRIPTION
	Y11-3901-000	000	F 1	WIRE, LEAD
	Y11-3902-000	000	F 1	WIRE, LEAD
	Y11-3907-000	000	F 1	WIRE, LEAD
	Y11-3909-000	000	F 1	WIRE, LEAD
	Y11-3911-000	000	F 1	WIRE, LEAD
	Y11-4402-000	000	F 1	WIRE, LEAD
	Y11-4404-000	000	F 1	WIRE, LEAD
	Y11-4406-000	000	F 1	WIRE, LEAD
	Y11-4411-000	000	F 1	WIRE, LEAD
	Y11-5002-000	000	F 1	WIRE, LEAD
	Y11-5003-000	000	F 1	WIRE, LEAD
	Y11-5011-000	000	F 1	WIRE, LEAD
*	CH2-8148-000	000	F 1	WIRE, LEAD
*	CH2-8247-000	000	F 1	WIRE, LEAD

INDEX OF PARTS LIST

REF.NO. C12-6061

NEW	PARTS NO.	PAGE	NEW	PARTS NO.	PAGE
	CA1-9007-000 000	6	*	CB3-1740-000 000	1
	CA1-9328-000 000	9	*	CB3-1741-000 000	1
	CB1-0279-000 000	6	*	CB3-1744-000 000	6
	CB1-4085-000 000	8	*	CB3-1767-000 000	3
	CB1-8049-000 000	9	*	CB3-1769-000 000	1
	CB1-8484-000 000	9	*	CB3-1770-000 000	1
	CB2-0682-000 003	4	*	CB3-1772-000 000	2
	CB2-0682-000 005	4	*	CB3-1773-000 000	2
	CB2-0682-000 008	4	*	CB3-1785-000 000	4
	CB2-0682-000 010	4	*	CB3-1793-000 000	4
	CB2-0682-000 012	4	*	CB3-1795-000 000	4
	CB2-0682-000 015	4	*	CB3-1803-000 000	8
	CB2-0682-000 018	4	*	CB3-1819-000 000	4
	CB2-0682-000 020	4	*	CB3-1821-000 000	6
	CB2-0682-000 025	4	*	CB3-1827-000 000	1
	CB2-0682-000 030	4	*	CB3-1828-000 000	4
	CB2-0682-000 035	4	*	CB3-1831-000 000	1
	CB2-0686-000 000	2		CB3-2139-000 000	7
	CB2-0722-000 000	1	*	CB3-2201-000 000	5
	CB2-0726-000 000	2		CF1-1948-000 000	8
	CB2-0727-000 000	2	*	CG2-1290-000 000	4
*	CB3-1134-000 000	8	*	CG2-1292-000 000	5
	CB3-1143-000 000	3	*	CG2-1293-000 000	5
	CB3-1147-000 000	2	*	CG2-1297-000 000	6
	CB3-1418-000 000	9	*	CG2-1302-000 000	7
*	CB3-1650-000 000	3	*	CG2-1306-000 000	8
*	CB3-1651-000 000	1	*	CG2-1314-000 000	8
*	CB3-1660-000 000	8	*	CG2-1315-000 000	8
*	CB3-1664-000 005	8	*	CG2-1316-000 000	7
*	CB3-1664-000 010	8	*	CG2-1317-000 000	7
*	CB3-1664-000 015	8	*	CG2-1319-000 000	6
*	CB3-1664-000 020	8	*	CG2-1320-000 000	6
*	CB3-1664-000 025	8	*	CG2-1321-000 000	6
*	CB3-1664-000 030	8	*	CG2-1322-000 000	6
*	CB3-1664-000 035	8	*	CG2-1323-000 000	5
*	CB3-1664-000 040	8	*	CG2-1324-000 000	5
*	CB3-1664-000 045	8	*	CG2-1325-000 000	5
*	CB3-1664-000 050	8	*	CG2-1326-000 000	3
	CB3-1666-000 000	3	*	CG2-1328-000 000	6
*	CB3-1700-000 000	8	*	CG2-1329-000 000	3
*	CB3-1706-000 000	8	*	CG2-1330-000 000	3
*	CB3-1711-000 000	2	*	CG2-1331-000 000	3
*	CB3-1719-000 000	7	*	CG2-1374-000 000	9
*	CB3-1720-000 000	6	*	CG2-1376-000 000	5
*	CB3-1721-000 000	6	*	CG2-1377-000 000	2

INDEX OF PARTS LIST

REF.NO. C12-6061

NEW	PARTS NO.	PAGE	NEW	PARTS NO.	PAGE
*	CG2-1378-000 000	1			
*	CG2-1379-000 000	2			
*	CG2-1381-000 000	4			
*	CH1-8237-000 000	4			
*	CH1-8239-000 000	5			
	CH6-3221-000 000	5			
	CH9-0233-000 000	6			
*	CH9-1071-000 000	7			
	CS2-5020-000 000	8			
	CS2-7205-000 000	8			
*	CY3-1469-000 000	2			
*	CY3-1470-000 000	4			
*	CY3-1472-000 000	4			
*	CY3-1473-000 000	7			
	XA1-3170-207 000	2			
	XA1-3170-259 000	6			
	XA1-3200-307 000	5			
	XA1-7170-167 000	4			
	XA1-7170-187 000	5			
	XA1-7170-207 000	5, 6			
	XA1-7170-227 000	3, 5			
	XA1-7170-257 000	4, 5			
	XA1-7170-307 000	4, 5			
	XA1-7170-309 000	3			
	XA1-7170-357 000	3			
	XA1-7170-407 000	3			
	XA1-7170-409 000	1, 2			
	XA1-7170-457 000	4			
	XA1-7170-609 000	1			
	XA1-7170-709 000	1			
	XA4-6170-459 000	8			
	XA4-9170-309 000	7			
	XA4-9170-357 000	5			
	XA4-9170-407 000	3			
	XA4-9170-457 000	3, 6, 7, 9			
	XA4-9170-459 000	3, 7, 8			
	XA4-9170-557 000	1			
	XA4-9170-709 000	3			
	XA4-9200-507 000	5			
*	YN2-3353-000 000	8			
*	YN2-3356-000 000	8			