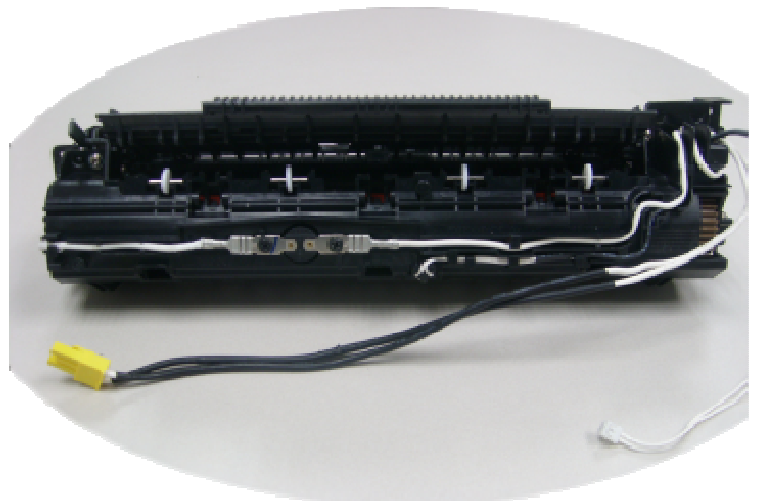


Service Guide



[CLP-310 /315 / CLX-317x series]



CONTENTS

1. Millet Fuser Error Algorithm	2
2. Defect Judgment Flow Chart	3
3. Component SVC part & Method	8

1. Millet series Fuser Error Check Algorithm

1) S/W Protection

Over heat error : Check, always

- Stay more 3 min. on condition over 190℃ : Check, when Stand-by Status.
- Stay more 30 sec. on condition over 190℃ : Check, when Warm-up & Power Save
- Stay more 20 sec. on condition over 205℃ : Check, always
- Stay more 2 sec. on condition over 215℃ : Check, always

Low heat error :

- Not to reach 150 ℃ for 3 min 40 sec : When warm up
- Stay more 20 sec. under 20℃ : When Printing & Stand-by

Open heat error : When Warm-Up, Check

- Stay more 20 sec, under 50℃

Abnormal ADC : When Stand-by & Printing, Check

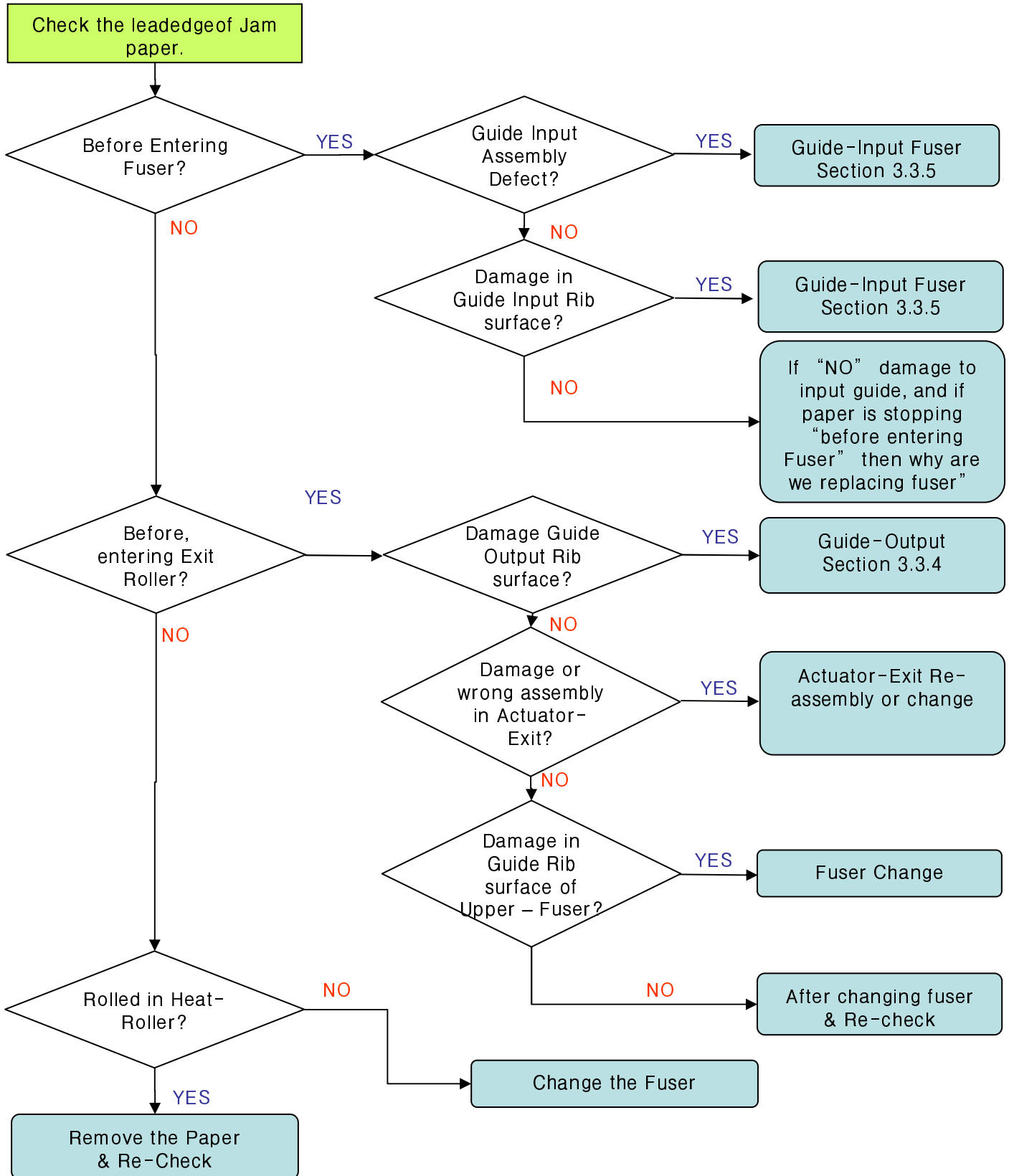
- Stay more 10 sec, Over 50 ℃ gap with ADC value.

2) H/W Protection : Compulsorily Heater Off, when sensing over 188℃ in Thermistor

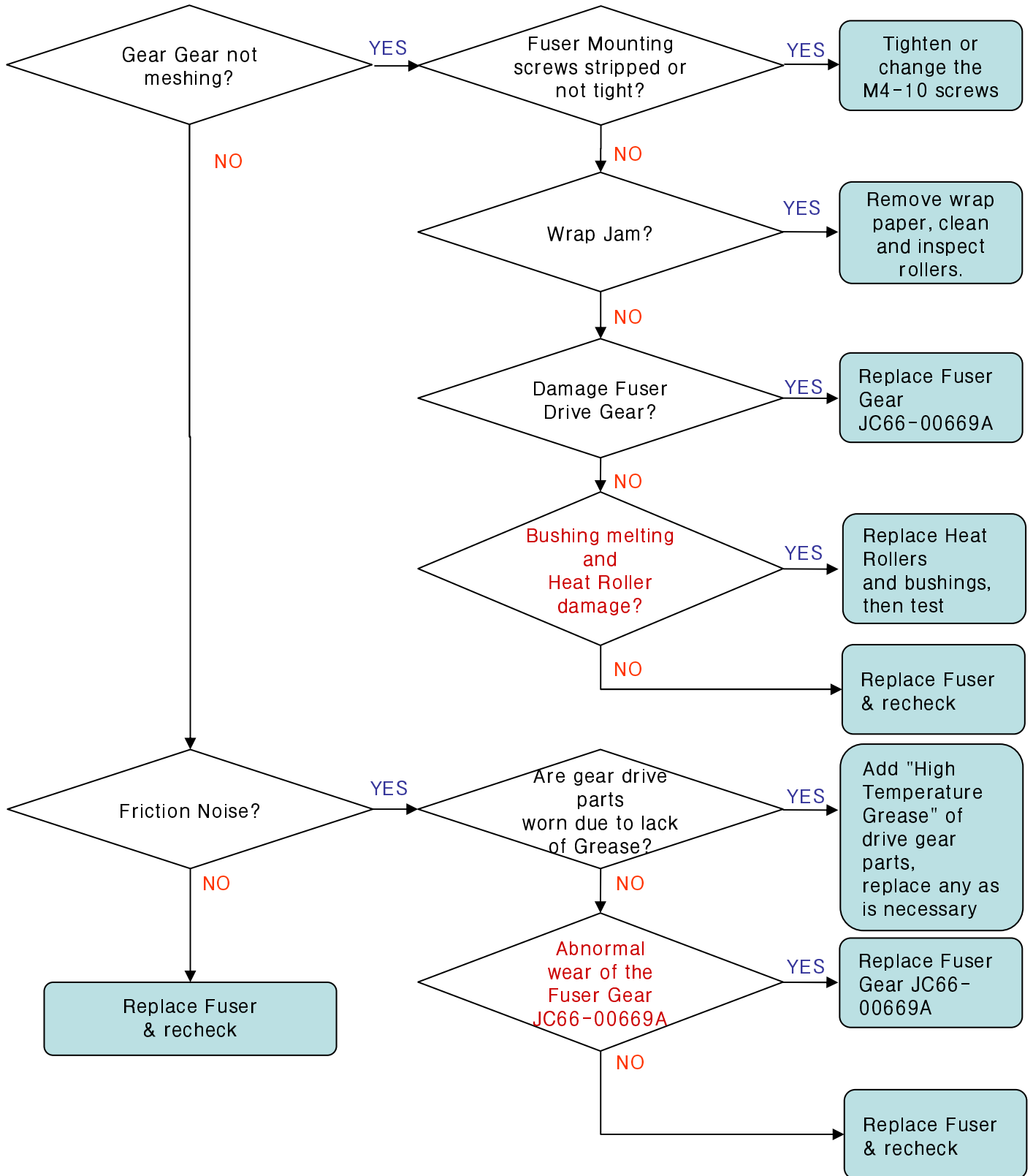
3) Mechanical Protection : On Thermostat sensing 170℃, Thermostat Open

2. Defect Judgment Flow Chart

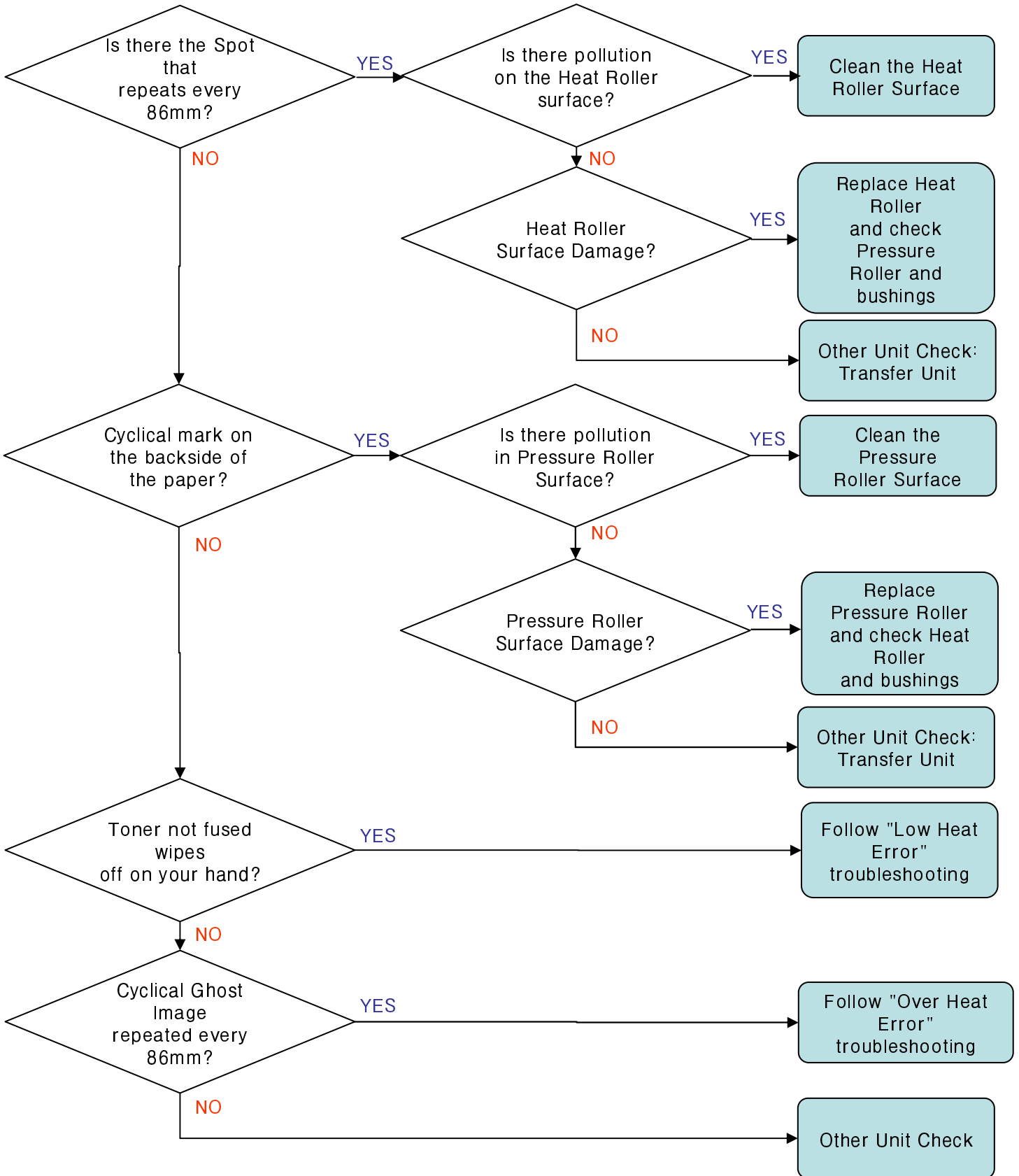
1. Jam 2



2. Abnormal Noise

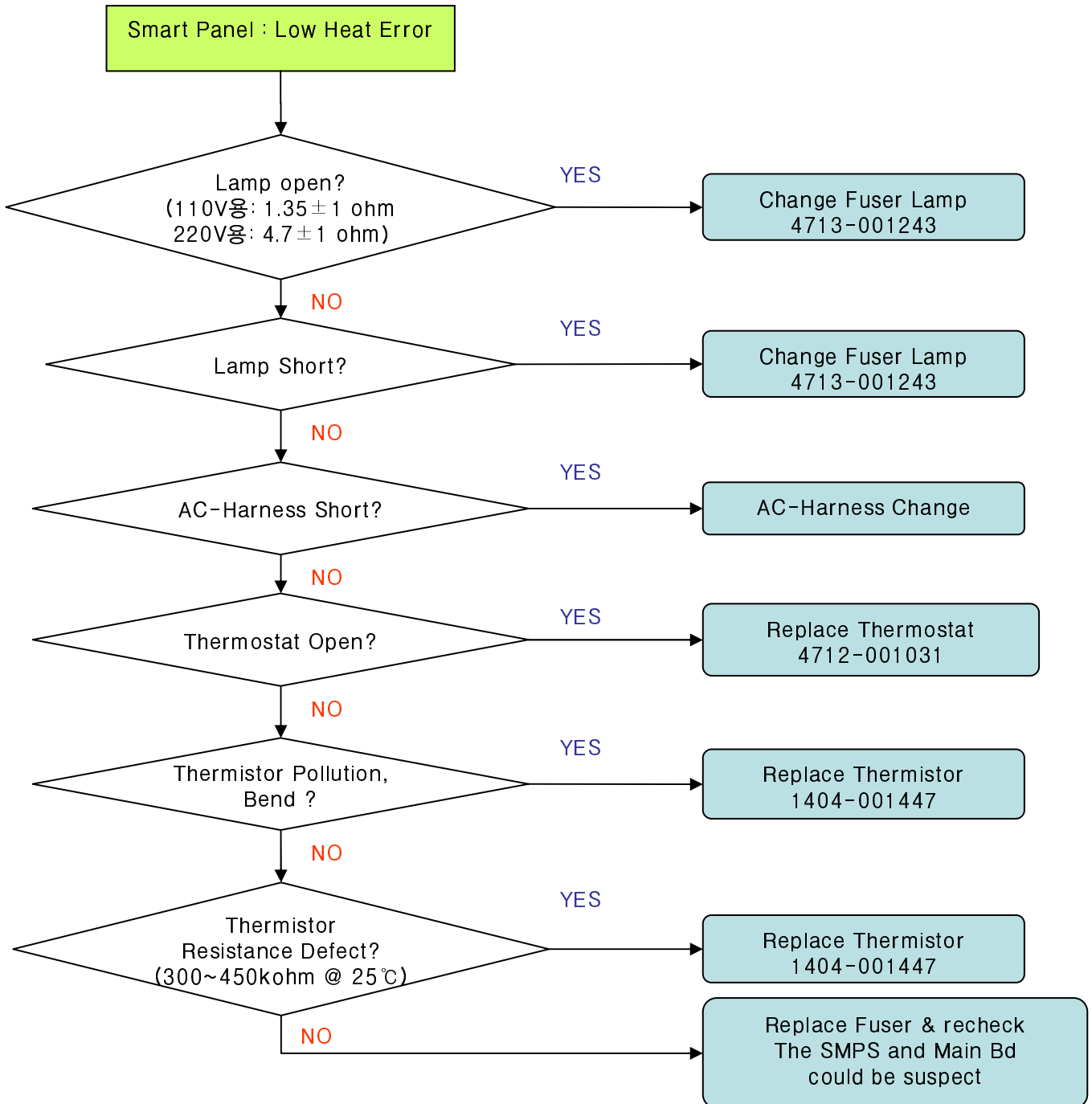


3. Image Defect

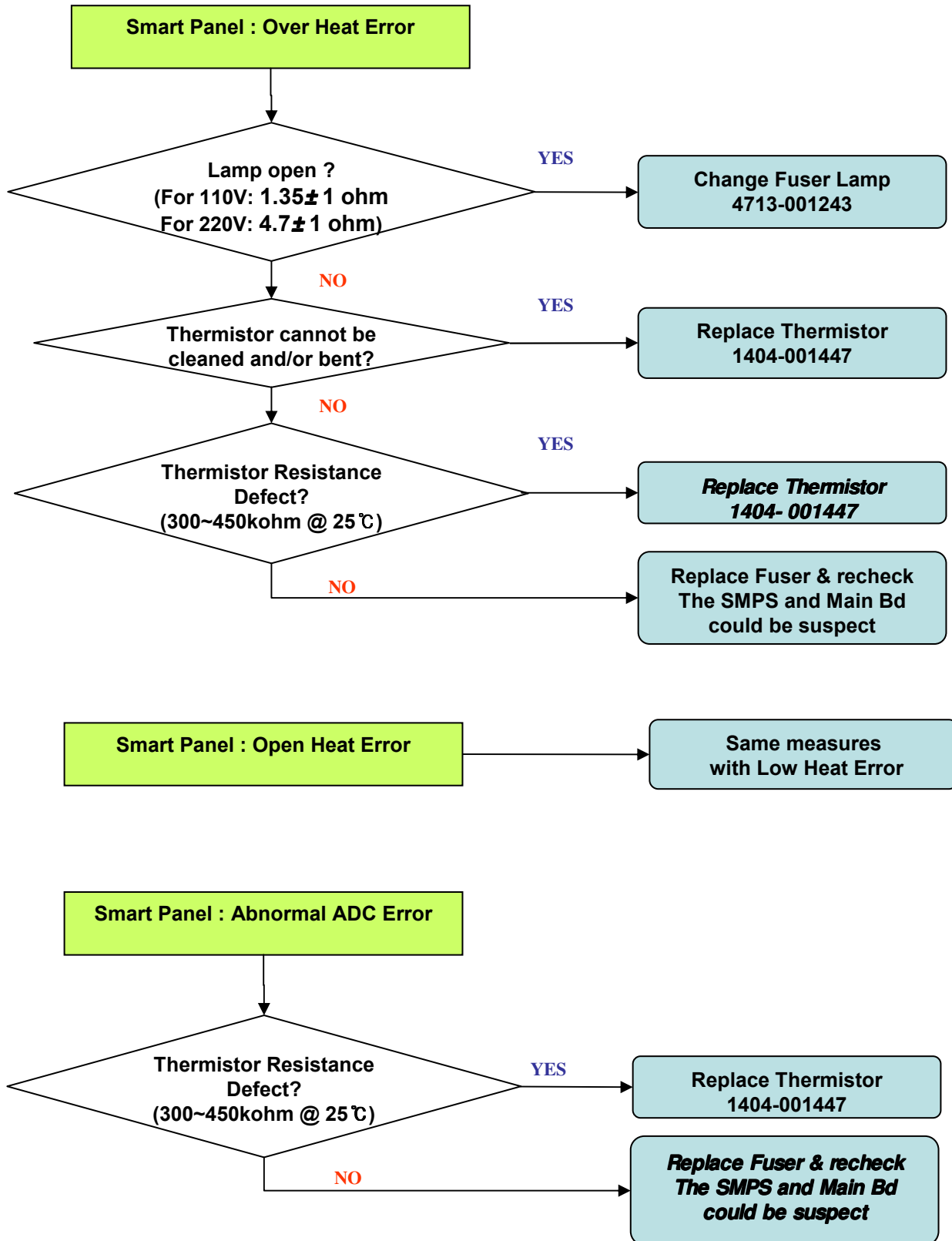


4. System Defect

1) Low Heat Error









2) Except Low Heat Error



3. Component Service parts and Change method

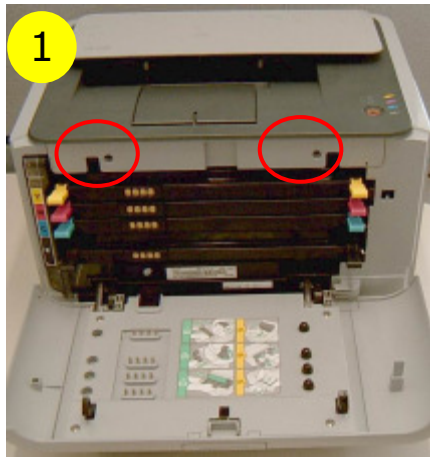
3.1 Main component Service Parts

	Photo	Part Code	Part name
1		JC66-01775A	ACTUATOR-EXIT FUSER
2		4713-001243	LAMP-HALOGEN
3		JC39-00501A	CBF HARNESS-FUSE_LINK1
4		JC39-00907A	HARNESS-FUSER AC
5		JC61-02364A	GUIDE-OUTPUT FUSER
6		JC61-02361A	GUIDE-INPUT FUSER

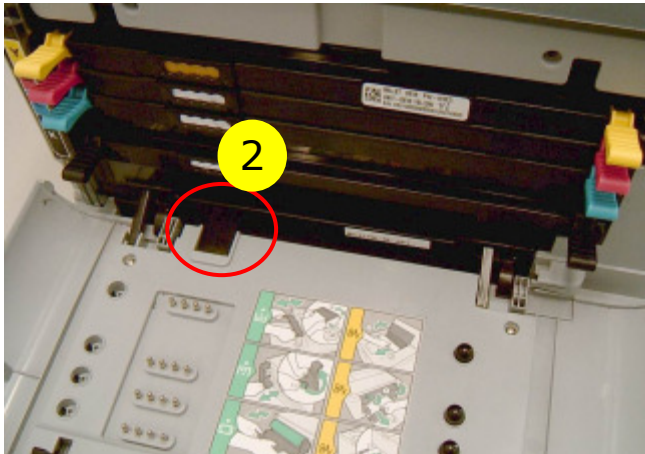
3.2 Fuser Assy Disassemble method

Caution – Do not work on the Fuser Unit if it is hot, as you may get burnt. Please wait until the fuser cools down enough to safely work on it.

1. After open Front Cover open and loose Two screws, disassemble Top cover



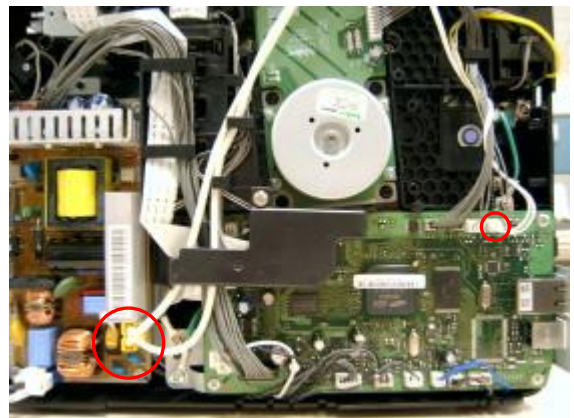
2. After separate the Cover Cable, separate the Connector.
3. Separate Front cover as push the Hook to inside.



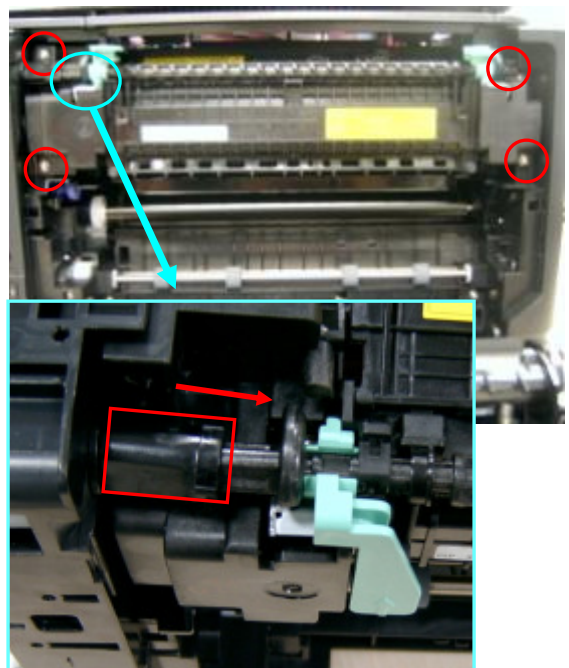
4. Loosen the screw in the red circle, separate the right side cover.



5. Remove the two connector in the red circle.



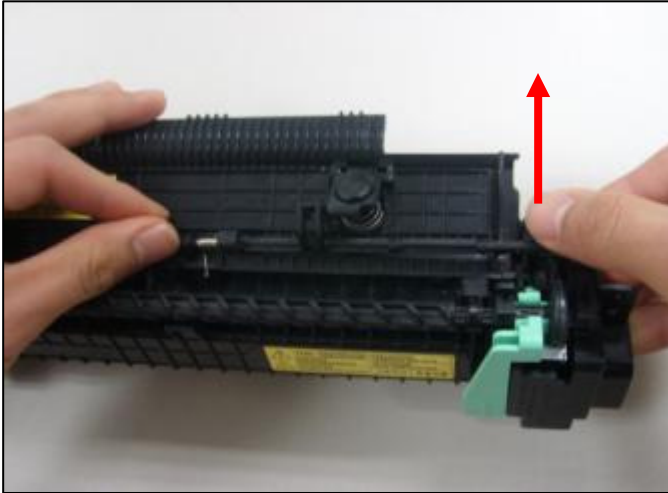
6. After loosen four screws in the red circle, pushing the holder shaft fuser to the right, and then separate the Fuser Assy from Printer.



3.3 Change method of fuser component part

3.3.1 ACTUATOR-EXIT FUSER

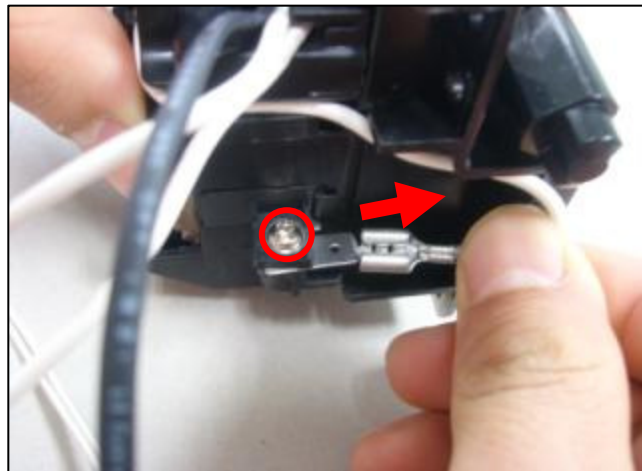
Separate it as take up right side of ACTUATOR-EXIT FUSER like the picture



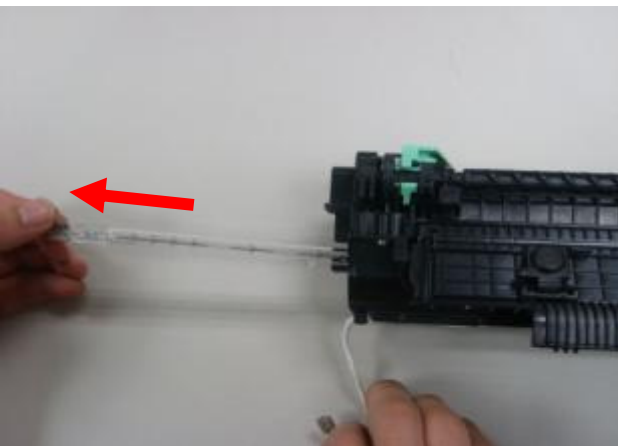
3.3.2. LAMP-HALOGEN

1. Pull out the harness (CBF HARNESS-FUSE_LINK1, HARNESS-FUSER AC) which is connected at Fuser LAMP-HALOGEN.

And loose the two screws (Left side, Right side each one) in the red circle.



2. Pull out the LAMP-HALOGEN like below photo.



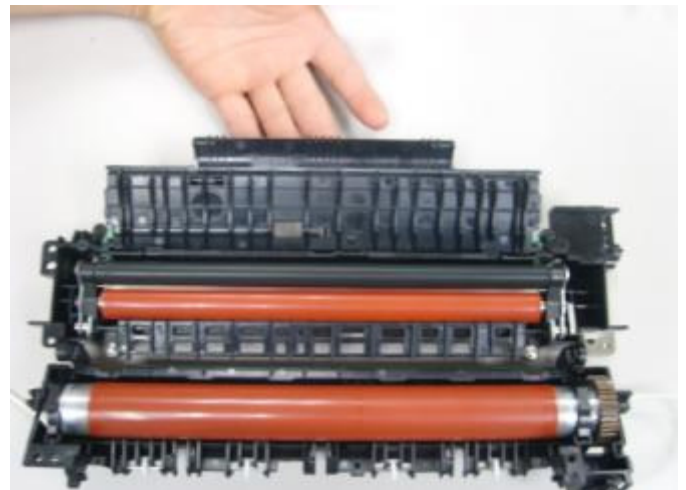
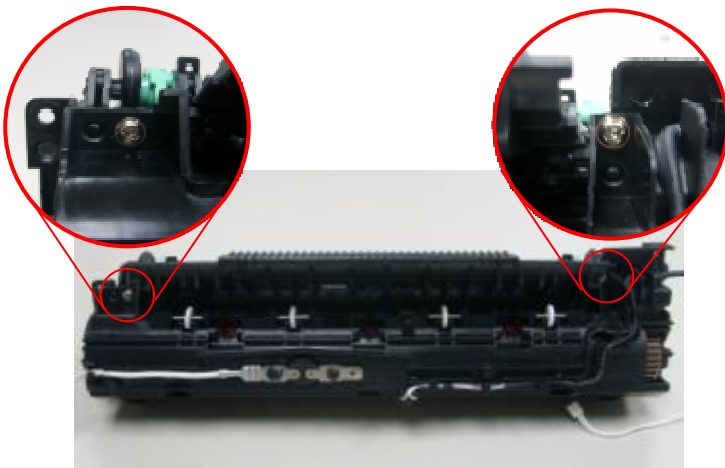
3.3.3. CBF HARNESS-FUSE_LINK1 and HARNESS-FUSER AC

1. Pull out the connected part from LAMP-HALOGEN (Refer to 2. LAMP-HALOGEN disassemble method)
2. Pull out the connected part from THERMOSTAT. And separate the harness from the Fuser.



3.3.4. GUIDE-OUTPUT FUSER

1. Loose the two screws in the red circle.
2. After Open FRAME-LOWER FUSER, Separate the GUIDE OUT FUSER.



Caution – Do not touch the surface of the roller.

3.3.5. GUIDE-INPUT FUSER

After loose the fixed two screws on GUIDE-OUTPUT FUSER, Disassemble



Caution – Do not touch the surface of the roller.