

User's Manual

USB 2.0 PC CAMERA

Table of Contents

Instal

1. Before Install.....	02
2. Start Install	02
3. After Install	05

Uninstall

1. Uninstall from setup program.....	06
2. Uninstall from Add/Remove Programs	08
3. After uninstall.....	08

Application

1. Execute application.....	09
2. Options in the View Screen	10

Install

1 . Before Install

When Windows detects a new PC Camera was added to the system , a new USB Device Found message appears on the screen , and the "**Found New Hardware Wizard**" dialog box appears to ask you to search a new device. Because we have not installed the camera driver, please click the "**Cancel**" button.

2 . Start Install

2-1 : Insert PC Camera Driver CD into your CD-ROM drive, the installer screen will automatically pop-up.(Figure 1)

Note1: If the installer screen does not pop-up automatically, click “Start”, then “Run” and execute the file “launch.exe” on the CD to start the installer program.

Note2: Please “Close” other window programs before start install



Figure 1: The start screen of installer

2-2 : Click the **"INSTALL PRODUCTS"** button to start installing driver .

2-3 : Choose the language you want , and click **"OK"** button , or click **"Cancel"** button to cancel install.(Figure 2)

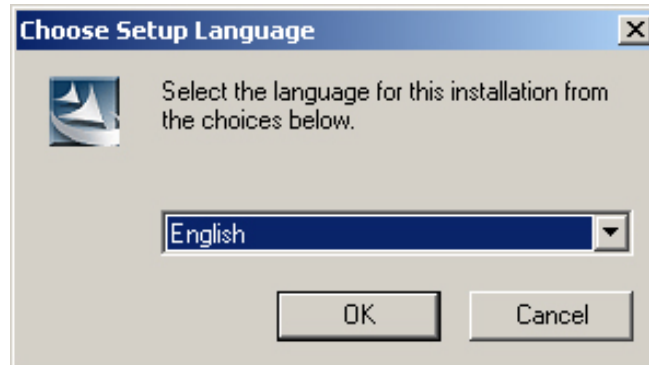


Figure 2 : Choose the language you want.

2-4 : The Welcome dialog box will display. Please click **"Next"** button to continue install , or **"Cancel"** button to cancel install. (Figure 3)

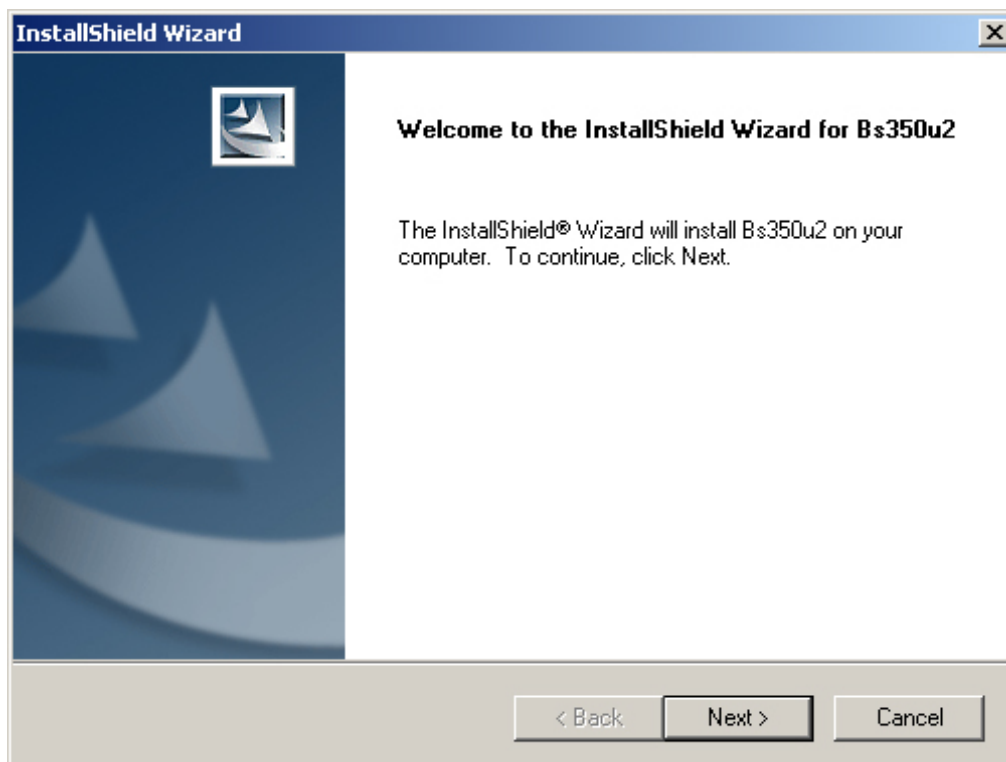


Figure 3 : "Welcome" message box

2-5 : Installer will show the achieved percentage of copy files to system. You can click "**Cancel**" button to cancel install. (Figure 4)

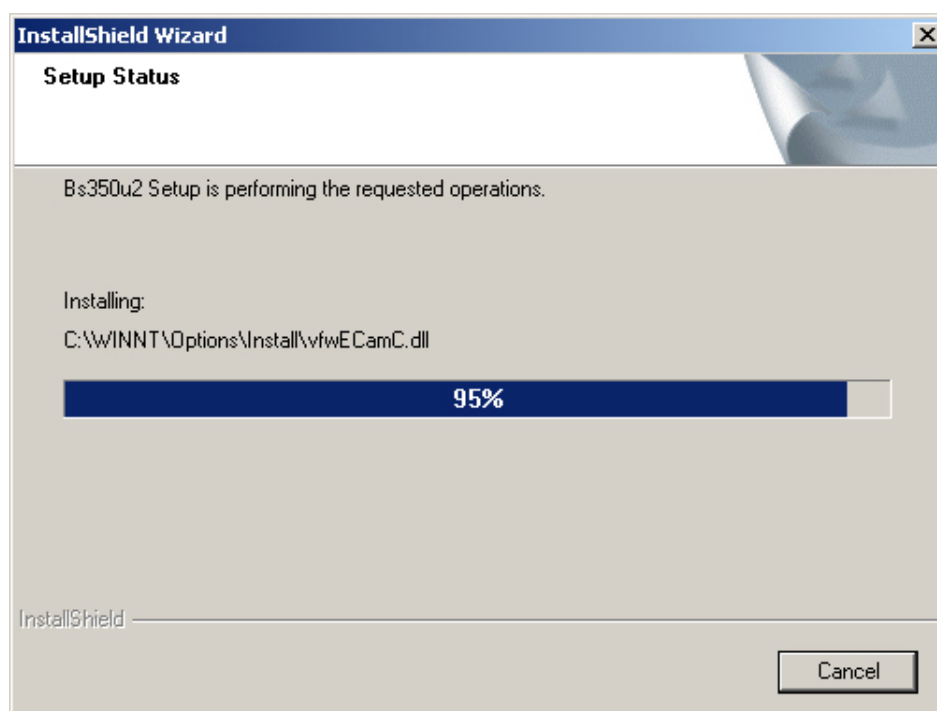


Figure 4 : The status of copy files

2-6 : The install is finished. Please click "**Finish**" button to complete the install.

Note : System will add new hardware. Windows will show the message “Your new is installed and ready to use.” in the System Tray. After this message, web camera is preparing to be used.

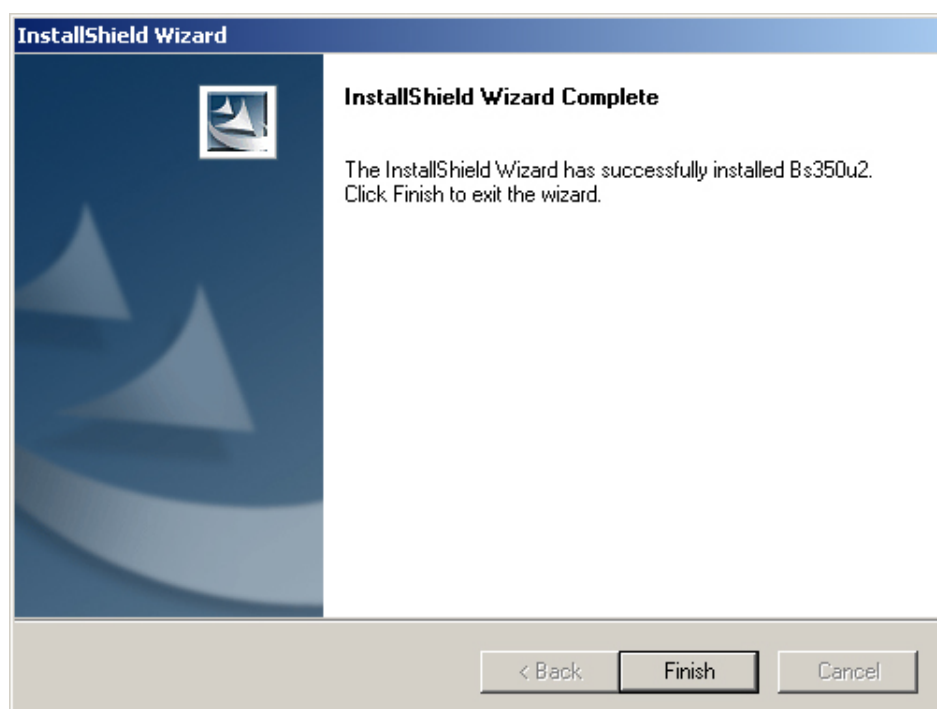


Figure 5 : Install completed

3 . After Install

3-1 : Checking Your Camera Driver

3-1-1 : Click "**Start**" > "**Settings**", and select "**Control Panel**".

3-1-2 : Double-click "**System**" icon in Control Panel and select "**Device Manager**" from the top.

3-1-3 : The screen will display the message "**Imaging devices**". (Figure 6)

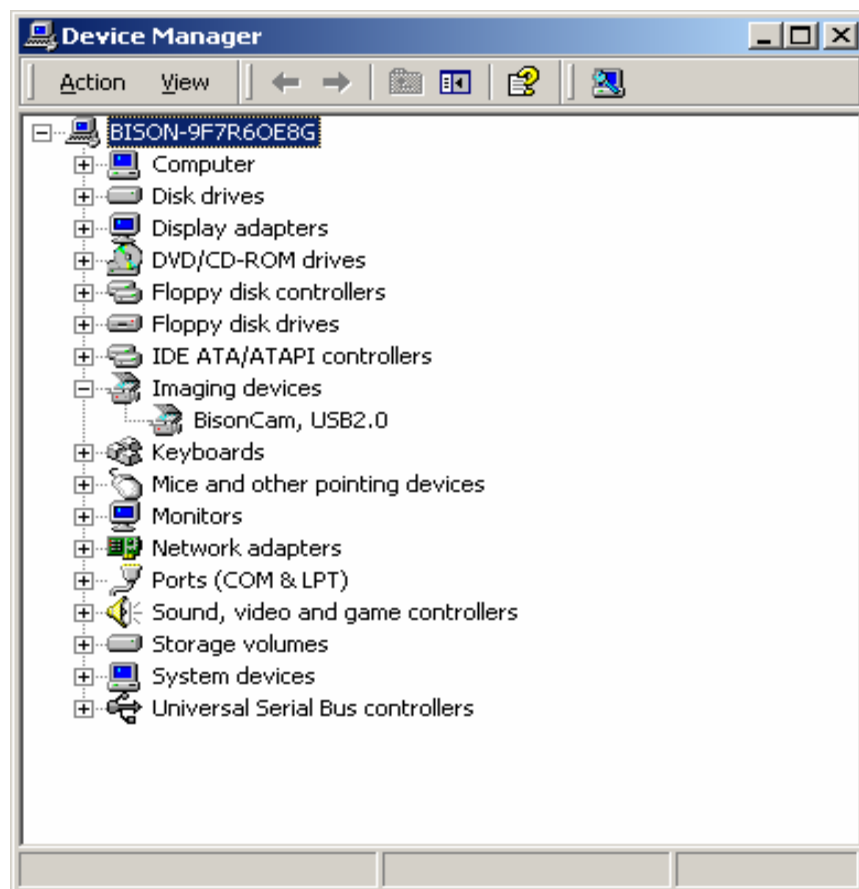


Figure 6 : Checking Camera Driver

Uninstall

1 . Uninstall from setup program

1-1 : Insert PC Camera Driver CD into your CD-ROM drive, the installer screen will automatically pop-up .

Note1: If the installer screen does not pop-up automatically, click “Start”, then “Run” and execute the file “launch.exe” on the CD to start the installer program.

Note2: Please “Close” other window programs before uninstall

1-2 : Then click the same button "**I N S T A L L P R O D U C T S**" to start uninstall driver .

1-3 : A dialog box will show up , and ask you if you want to uninstall Camera driver and all components , please click "**OK**" button to continue uninstall , or click "**Cancel**" button to cancel the uninstall . (Figure 7)

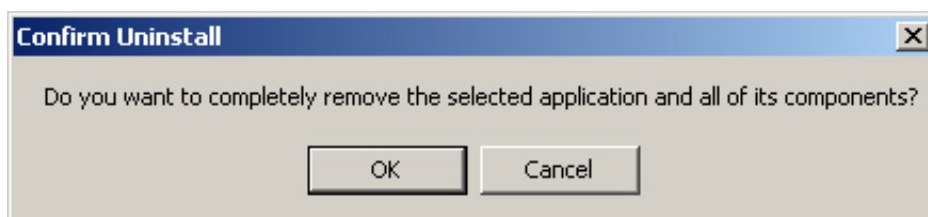


Figure 7 : A dialog box to verify uninstall action .

1-4 : Prepare to uninstall driver , you can interrupt by click "**Cancel**" button .(Figure 8)

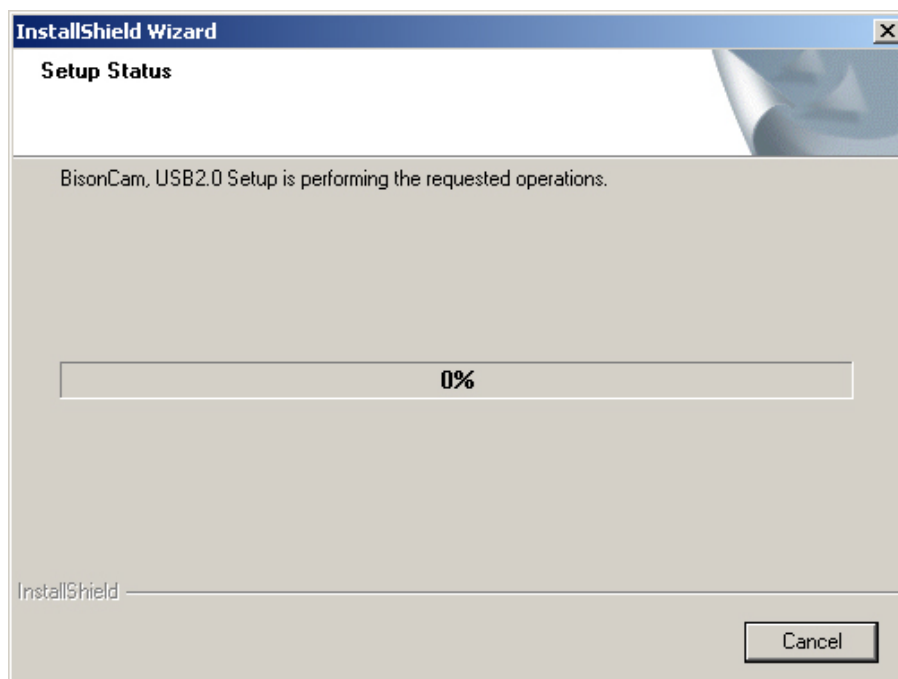


Figure 8 : Prepare to uninstall driver .

1-5 : Complete uninstall (Figure 9), the program will restart Windows .

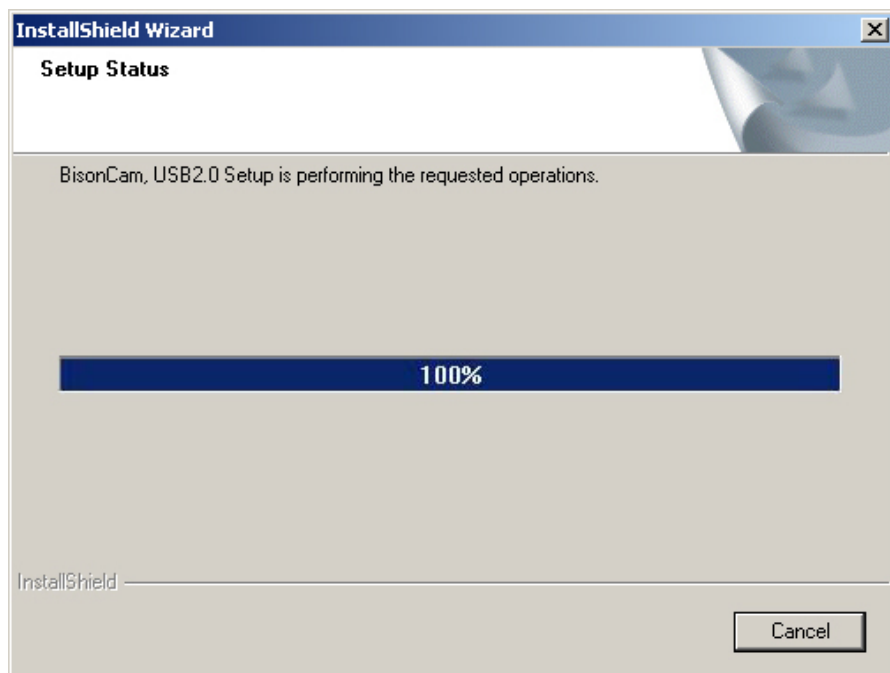


Figure 9 : Complete uninstall .

2 . Uninstall from Add/Remove Programs

2-1 : Click "**Start**" > "**Settings**" > "**Control Panel**" , and double click "**Add/Remove Programs**" to uninstall driver . Choose program name "**Bison Cam, USB2.0**" , and click "**Change/Remove**" button to uninstall . (Figure 10)

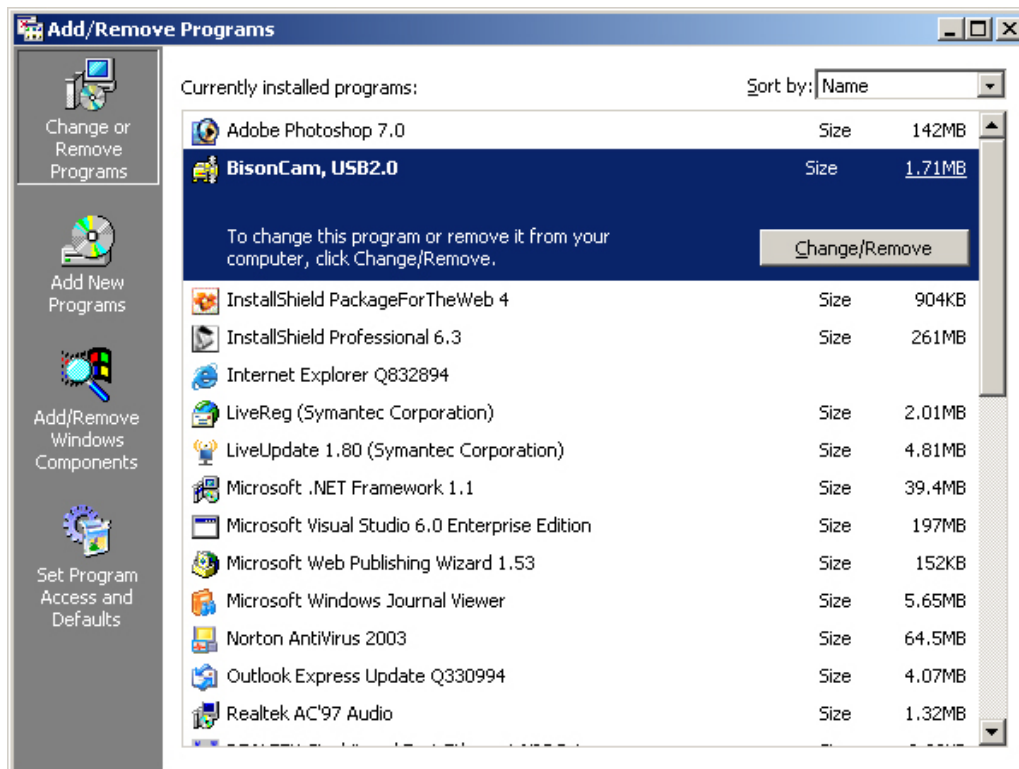


Figure 10 : Uninstall from Add/Remove Programs .

2-2 : Do the same steps as 1-3 ~ 1-5 .

3.After uninstall

Please Restart your computer to complete uninstall driver.

Application

After install PC Camera driver , there is a shortcut in desktop which named "**Bs350u2**" , and a folder "**Bs350u2**" in "Programs" .

1 . Execute application

1-1 : Click "**Bs350u2**" shortcut in **desktop** , or click "**Start**" > "**Programs**" > "**Bs350u2**" > "**Bs350u2**" . (Figure 11)

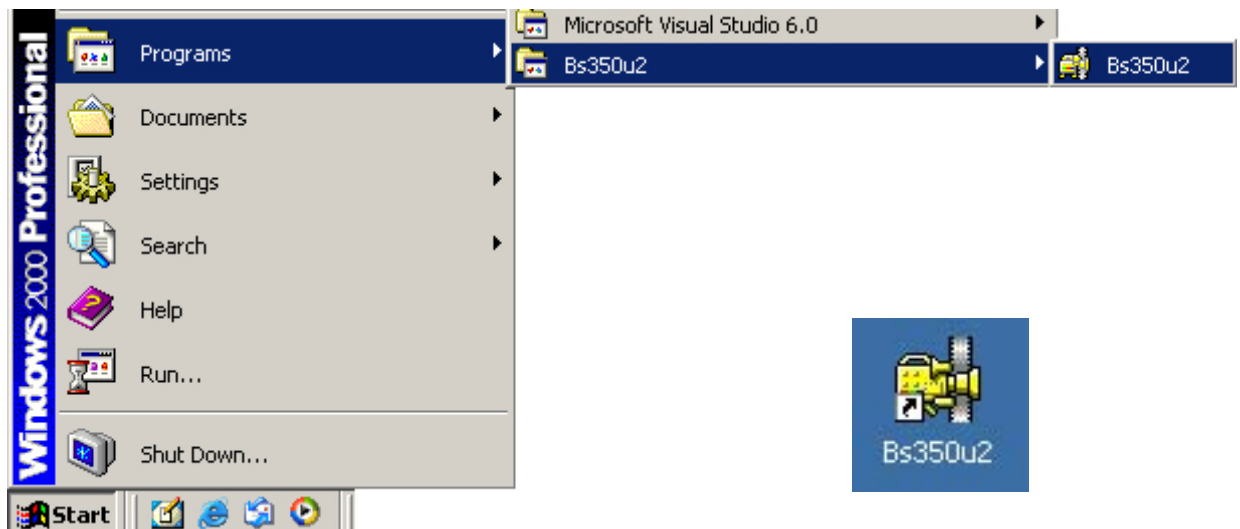


Figure 11 : Execute application .

1-2 : The application screen will display as below . (Figure 12)

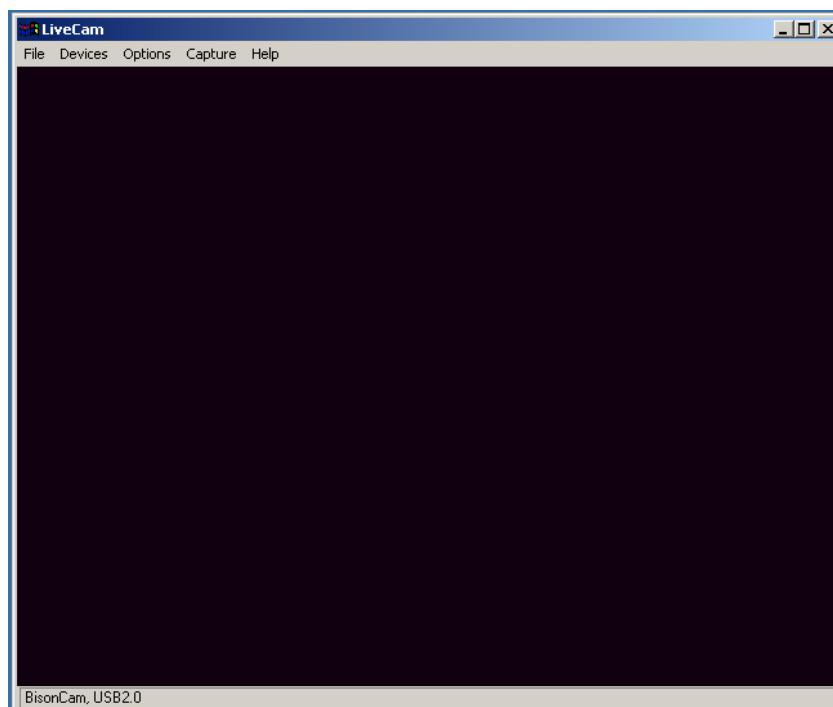


Figure 12 : The application screen .

2. Options in the View Screen

- 2-1 : **"File"** > **"Set Capture File..."** : set save directory and video file name . (Figure 13)
 "File" > **"Allocate File Space..."** : allocate free space for video file . (Figure 13 & 13-1)
 "File" > **"Save Captured Video As"** : save as video file . (Figure 13)
 "File" > **"Exit"** : exit the application . (Figure 13)

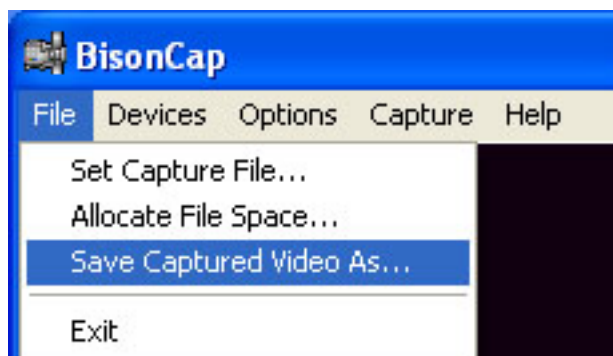


Figure 13 : File .

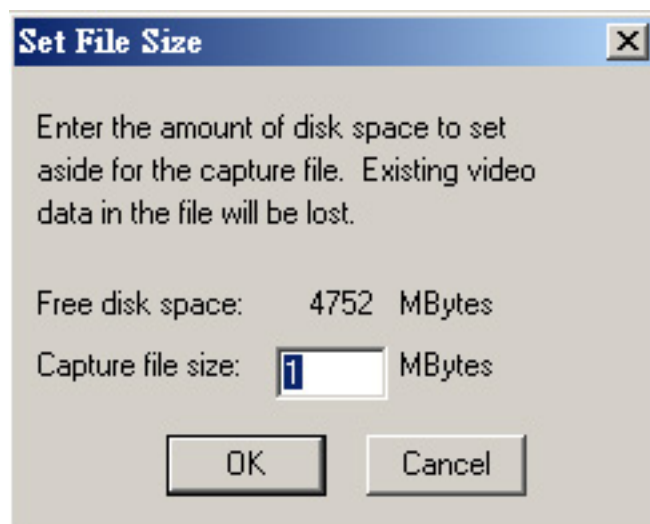


Figure 13-1 : Allocate File Space

- 2-2 : **"Devices"** : set camera device . (Figure 14)
 please choose **"BisonCam, USB2.0"** device.
 the item **"Realtek AC97 Audio"** is for audio, please don't choose.



Figure 14 : Develop .

- 2-3 : **"Options"** > **"Preview"** : set preview in screen or not . (Figure 15)
 "Options" > **"Video Capture Filter"** : set option of data stream . (Figure 15&15-1-2-3)
 "Options" > **"Video Capture Pin"** : set video source and property . (Figure 15&15-4)

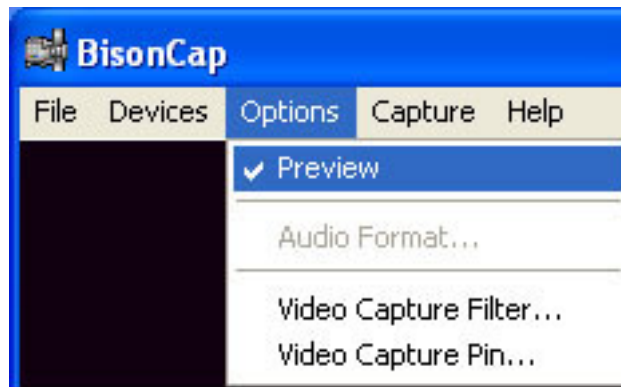
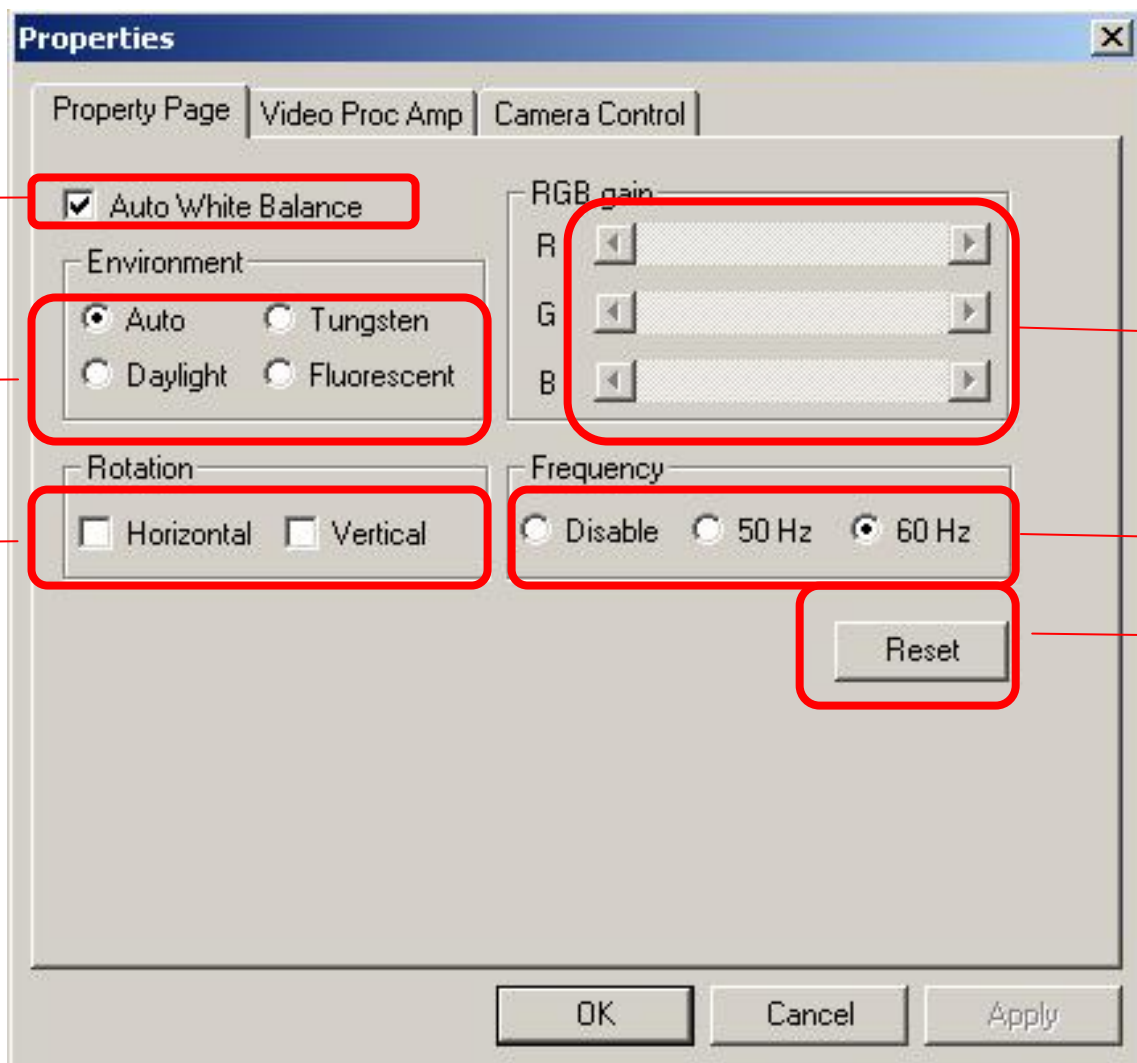


Figure 15 : Option .



Choose if you want Auto White Balance

Change RGB value as you want

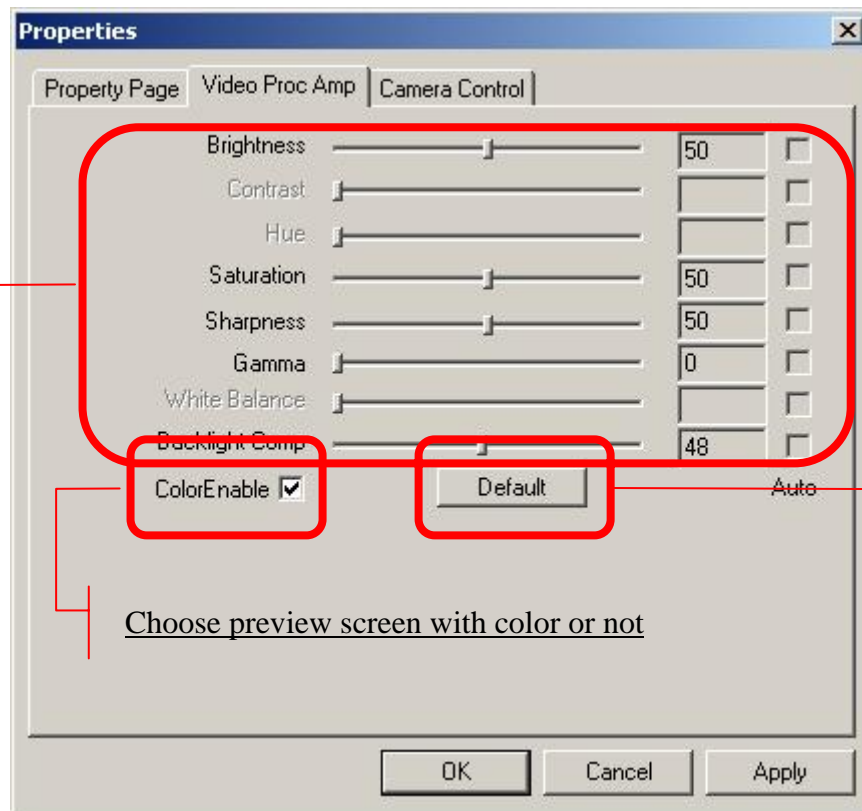
. Set camera work environment .

Set the frequency

Horizontal rotation & vertical

Reset all settings in this page to default.

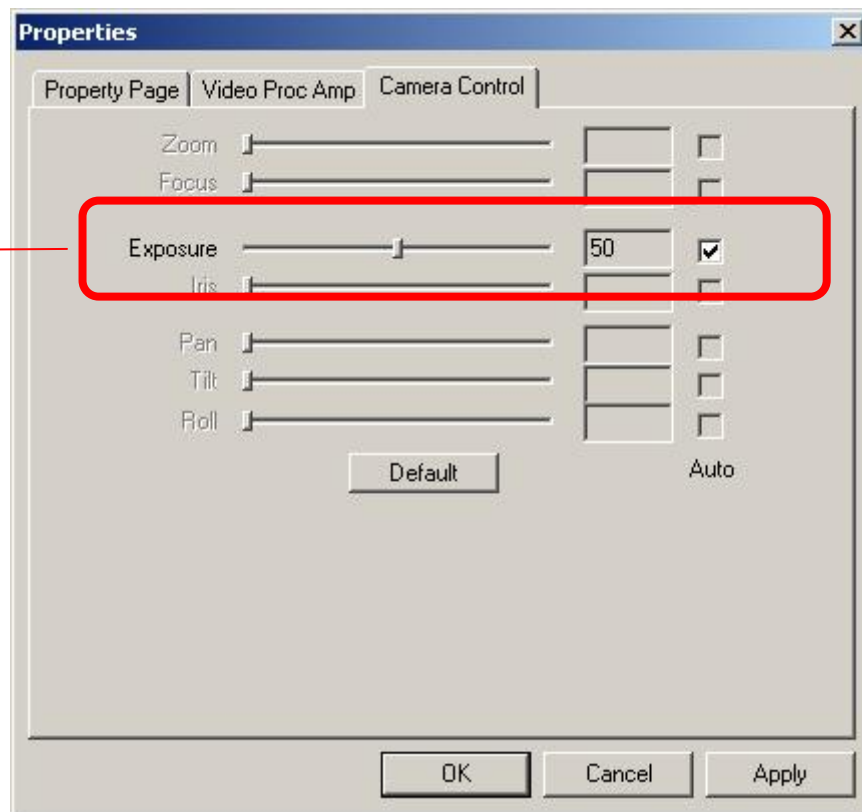
Figure 15-1 : Property page



To adjust video settings and show value.

Reset all settings in this page to default..

Figure 15-2 : Video Proc Amp



Exposure : if you want to change the value , please don't click the box.

Figure 15-3 : Camera Control

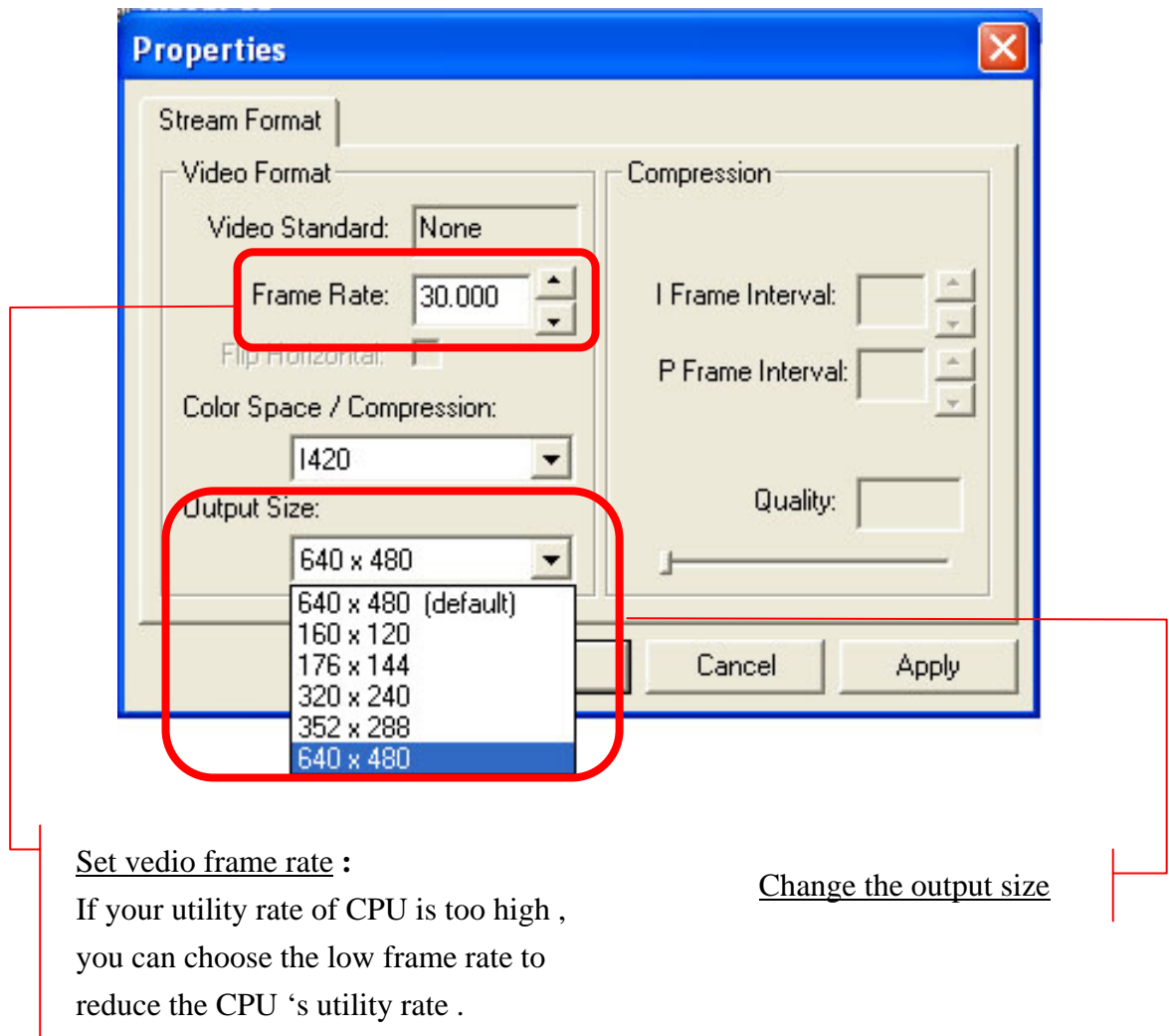


Figure 15-4 : Stream Format

- 2-4 : "**Capture**" > "**Start Capture**" : start capture video stream . (Figure 16)
- "**Capture**" > "**Stop Capture**" : stop capture video stream , (Figure 16)
or press **ESC** to stop.
- "**Capture**" > "**Set Time Limit**" : set time limit of capture stream . (Figure 16&16-1)

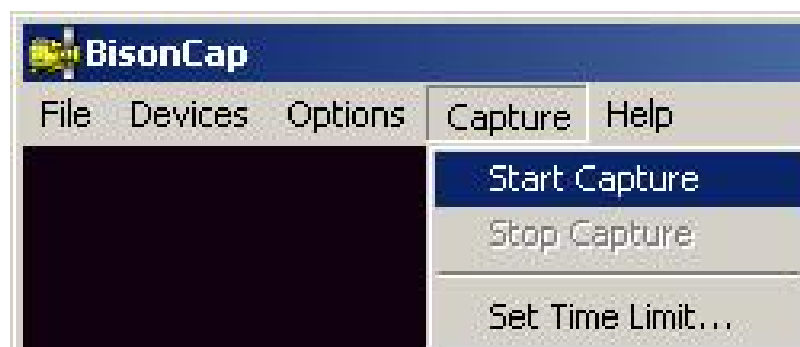


Figure 16 : Capture

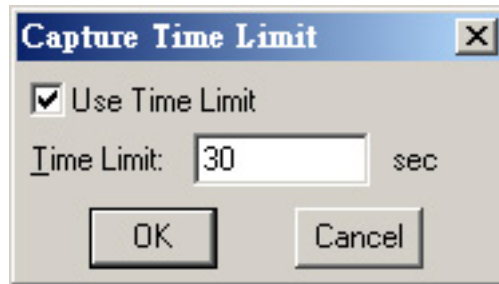


Figure 16-1 : Set Time Limit

2-5 : "**H**elp" > "**A**bout..." : application name and version . (Figure 17)

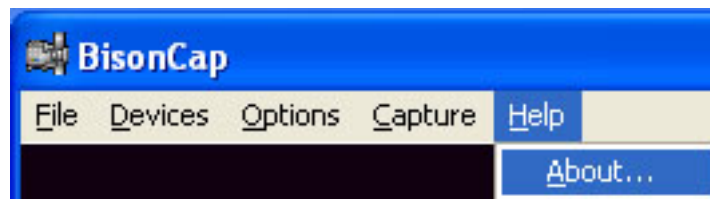


Figure 17 : Help

