

**1080P FULL HD
SCOUTING CAMERA**

HC-800 Series (HC-800A/M/G/LTE)

Support 4G LTE /3G WCDMA / 2G GSM &GPRS Network



**USER'S MANUAL
Hunting Trail Camera**

Table of Contents

1. General Information.....	3
1.1 Applications	4
1.2 Main Features	4
1.3 Power Supply	5
1.4 Memory card Selection	6
1.5 Transmitting picture of 4G /3G/ 2G camera	6
2. Whole View and Details of camera	7
2.1 Front View of Camera	7
2.2 Internal, Side View of Camera	8
3. Quick Start	9
3.1 Insert SIM Card	9
3.2 Load Batteries or Connect to External power	9
3.3 Enter to TEST Mode	10
3.4 Enter to ON Mode	12
4. Advanced Setting	12
4.1 How to set camera menu	12
4.2 Setup Camera on PC	22
4.3 Camera to ON mode	28
5. SMS Command Code	29
6. Trouble shooting	29
6.1 Camera Doesn't Capture Subject of Interest	29
6.2 Camera stops Taking Images.....	30
6.3 Night Vision Flash Range Doesn't Meet Expectation	30
6.4 Camera Take Images but won't send them to mobile phone /E-mail.....	31
7. Specifications	31
8. Packing info	33
9. Warranty	33

1. General Information

Thank you for choosing HC-800LTE scouting camera, one of HC800 series camera, which are easy operation and highly qualified products.

This 1080P FHD digital camera was totally R&D by our diligent and smart engineers based on feedbacks and requirements from customers globally, with her highly sensitive Passive Infra-Red (PIR) sensor, HC800LTE can send original size pictures of 16MP & 1080P FHD video file to your mobile phone and E-mail via high communication speed 4G LTE network, Furthermore, the latest version HC800LTE supports FTP function, is able to upload the videos & pictures to the FTP space, so you can download & watch the videos & pictures via FTP software.

This manual also applies to basic model HC-800A (Basic model) / HC-800M (2G GSM model) and HC-800G (3G Model).

Please read the user's manual in details before you start the operation of HC-800 series scouting camera.

Ordering information

Version for **Europe** Market

HC-800LTE-E

Version for **U.S.** Market

HC-800LTE-A

Version for **Canada** Market

HC-800LTE-CA

Version for **Australia** Market

HC-800LTE-AU

Version for **Russia** Market

HC-800LTE-RU

The network frequency bands list in below:

Version for Europe & Australia

4G FDD-LTE frequency: **B1 / B3 / B5 / B7 / B8 / B20**

3G WCDMA frequency: **B1 / B5 / B8**

2G GSM Network: **850 / 900 / 1800 / 1900**

Version for U.S. & Canada

4G FDD-LTE frequency: **B2 / B4 / B5 / B12 / B17**

3G CDMA frequency: **B2 / B4 / B5**

1.1 Applications

This digital camera can be used to take photographs and short time videos automatically, is an ideal product for **wildlife hunting & trail, wireless home & outdoor monitoring, property's security** etc., with its stealth appearance and mini shape. It is easy to deploy but hard to find out.



1.2 Main Features

- ▶ MMS/SMTP: HC-800LTE supports sending 5~30 seconds 1080P video & 16MP/12MP/8MP original size photos to your mobile phone or E-mail account by 4G FDD-LTE network.
- ▶ FTP function, you can download & watch the videos & full-size pictures of camera via FTP software.
- ▶ Wide lens (120-degree FOV lens), 3PIRs up to 120-degree detection angle.
- ▶ 0.3 Second fast trigger time, easy to capture every amazing moment.
- ▶ 3 working modes to choose: Camera, Video and Camera+Video.
- ▶ 42pcs infra LEDs, provide up to 20 meters/65 ft night vision range.

- ▶ Tough and water-resistant body design.
- ▶ Low power consumption, extremely long time standby life (up to 4~6 months with 8X AA batteries.)
- ▶ Time-lapse recording, period time shooting, with timer setting on, the camera can be programmed to only work on specified period time every day.
- ▶ Built-in 2.0" TFT color display and 8 key control panel.
- ▶ 12 Languages of menu (default is English).
- ▶ Date, Time, Temperature and Moon phase stamped on the bottom of pictures and Videos.
- ▶ Lockable and 4 digit password protection.
- ▶ SMS code remote control camera to wake up camera or send MMS/SMTP

1.3 Power Supply

HC-800 series need 4X or 8X AA alkaline batteries, also work with NIMH or Lithium rechargeable batteries.

- ▶ Batteries should be inserted as indicated inside of battery case, upside down batteries electrode may cause device malfunction, Also, we strongly recommend you to change the batteries when power icon on camera screen or photo stamp is empty.
- ▶ Don't mix batteries types, Different batteries used in camera may cause permanent damage which also violates warranty policy.
- ▶ If you are not using the camera for an extended period of time, it is highly recommended to remove the batteries from camera to avoid possible acid leak that may damage the camera and void the warranty.
- ▶ Due to different settings, objects activities within camera detection zone, different brands and quality of batteries, and working environment, we are not able to list out exact number of photos or videos that camera can take with 8X AA alkaline batteries, better performance can be given by 8 AA rechargeable NIMH and Lithium batteries.

To bring you better experience, this camera is able to work with most standard 9V/1~2A Lithium battery built-in solar panel (solar panel can't charge the rechargeable batteries of camera).

1.4 Memory Card Selection

A memory card(Micro SD card) is required to operate the camera, when the camera switch is at “TEST” and no memory card is used, the screen will display “no File” . The memory card slot of camera has 32GB memory capacity. Before insert or remove the memory card, the camera must be turned to “OFF” . Failing to do so may causes loss of files or damage the pictures that already recorded in the memory card. When memory card is full, the screen will indicate “Memory Full” , the following data shows an approximate quantity of photos which can be recorded by the camera depending on the memory card capacity.

- ▶ The camera has not built-in memory, it only works if a memory card is inserted. Before memory card inserted, please format the memory card to improve the battery life and shutter speed.
- ▶ The camera max memory cards capacity is 32 GB, 64GB or higher memory card can't be recognized by camera.
- ▶ To avoid malfunctions, keep the memory card away from moisture and avoid strong vibration, dust, heat sources and direct sunlight.
- ▶ Insert the memory card as indicated by the icon on the slot. don't force the memory card into the slot, or bend /twist the memory card.
- ▶ After transport, wait until the memory card has reached ambient temperature before you use it for the first time.
- ▶ Major fluctuations in temperature or humidity can lead to condensation which could cause an electrical short-circuit.
- ▶ When the memory card is full, it will automatically stop taking pictures and videos, camera doesn't support cycle recording.
- ▶ To insert a memory card into the memory card slot of the device, push it into the slot until it clicks into place.
- ▶ To remove the memory card from the memory card slot of the device, press the protruding edge of the memory card in a little way until it pops out, then remove the card.

1.5 Transmitting picture of 4G /3G/ 2G camera

	MMS	SMTP	FTP	SMS
4G	<100kb(default) Options: 200kb/100kb/50kb (depend on the limit of the mms server)	<40MB (Picture or Video)	<40MB (Picture or Video)	√
3G		<1MB (Picture only)	X	√
2G		<100KB (default) (Picture Only) Options: 200kb/100kb/50kb	X	√

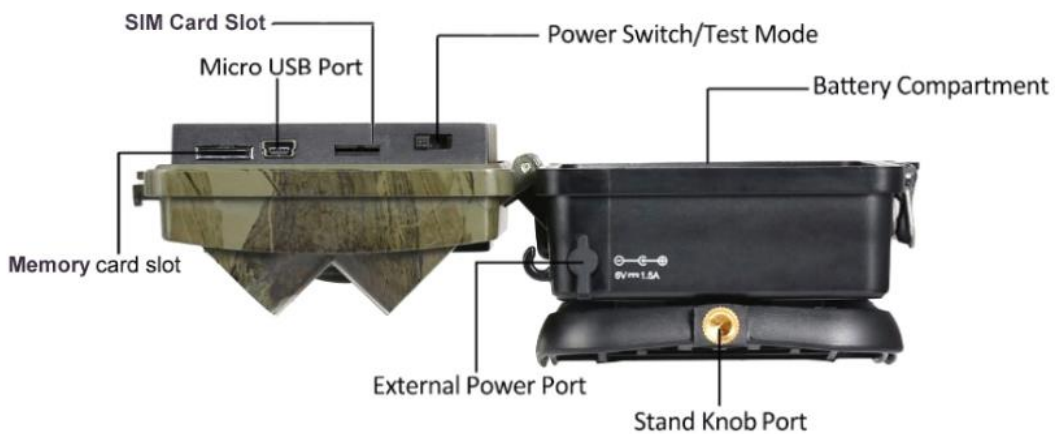
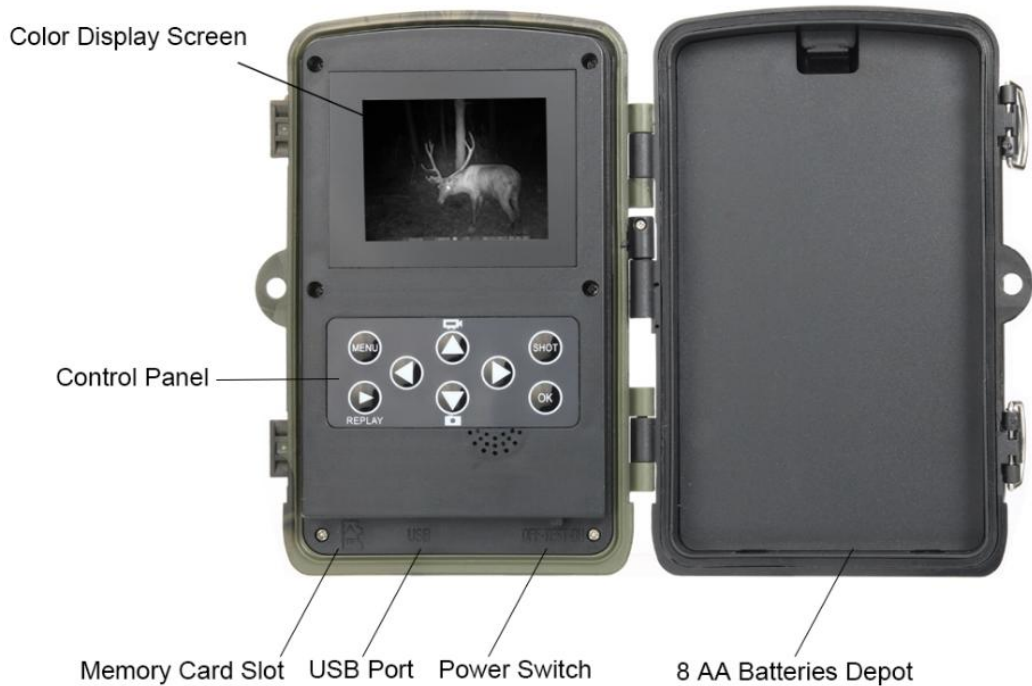
2. Whole View and Details of Camera



2.1 Front View of Camera



2.2 Internal, Side View of Camera



3. Quick Starting

3.1 Insert SIM card

A SIM card is needed for HC800LTE (basic model HC800A, does not need SIM card) Make sure your SIM card supports **Short Messaging Service (SMS)**, **Multimedia Messaging Service (MMS)** and **data traffic service**.

When SIM card recognized by camera, the camera display will show carrier's icon.

3.2 Load Batteries or Connect to External power

- ▶ 4X or 8X AA batteries



8X AA Batteries

- ▶ External power DC 9V/1.5A, we have a solar panel (optional), which can power camera 7X24 hours, is very convenient for long-time working.



3.3 Enter to TEST Mode


After camera connect a power supply, switch camera to the "TEST" position and its display will light up.




Cautions: Please don't switch from OFF to ON directly, only from Off to TEST, will the camera display light up.

There is a control panel with 8 buttons when you open the camera.




Press the key  to choose the system menu or Exist from system menu.

Press the key  to choose the next option.

Press the key  to manually trigger the shutter. A photo or video (depending on the mode) will be taken and saved to the memory card.


Press the key  to save the menu setting.

Press the key **REPLAY** to review photo or video, press  to start and stop Video.

In the Test mode, you can test the working area of PIR (Passive Infrared) sensor, specifically the sensing angle and distance. To perform the test:

1. First position the camera at properly height and aim at the region of interest (ROI).
2. Walk slowly from one side of the ROI to the other side parallel to the camera. Try different distances and angles from the camera.
3. If the Motion Indicator flashes RED, it means that the position you located is detected by PIR sensors.

The best position to place the camera could be found through this TEST mode. Generally, it is recommended to place the camera at the height of 3 to 6 feet (1 to 2 meters) to the ground.

Press  directly to get the IMEI (in the TEST mode).



3.4 Enter to ON Mode

After finish or check all the setting, switch power button to the ON to enter to the ON mode. The motion indicator will flash red for about 5 seconds and the camera starts working after flash. It will immediately take pictures or record videos when person or animal enters the area of the PIR sensor.

Cautions: To avoid potential false triggers due to temperature and motion disturbances, please do not aim the camera at a heat source (e.g.: the sun, heated stone or metal) or nearby tree branches and twigs. The ideal direction to aim at is the north and the open place without heat source. Also, remove any twigs close to the front of the camera.

4. Advanced Setting

4.1 How to set camera menu

4.1.1 camera capture mode

There are 4 capture modes in the system menu.



- ▶ Camera, when you choose **Camera** mode, your camera will take pictures only.
- ▶ Video, when you choose **Video** mode, your camera will take videos only.
- ▶ Camera & Video, when you choose **Camera & Video** mode, your camera will firstly take picture then take a video.
- ▶ **Time lapse**, when you choose Time-lapse mode, PIR function will not work, camera will take picture or video every selected time (30/60/240 minutes).

4.1.2 Language

Camera menu languages include **English / Français / Deutsch / Español / Nederland / Polish / Português / Svenska / Italiano / Suomi**, you can choose your interested language for better operation.



4.1.3 Image size

Select a photo size: 16 MP, 12 MP (preset) or 8 MP. The larger the file size, the more detailed the image. but the maximum number of high-resolution images that can be stored on the memory card is much fewer.

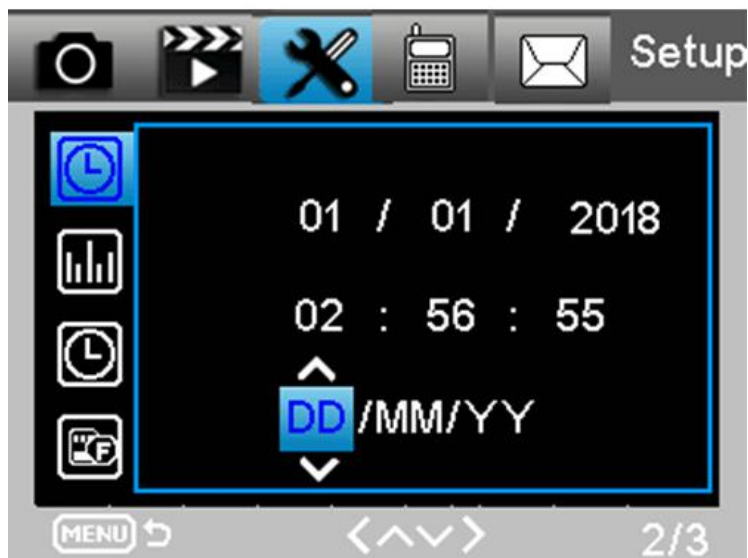
4.1.4 Video resolution

Select the screen resolution: 1080 FHD, 720P, WVGA, VGA. The higher the resolution, the sooner the capacity limit of the memory card will be reached.



4.1.5 Date & time

Use control panel to set up date and time. They will be displayed on the photos and video.



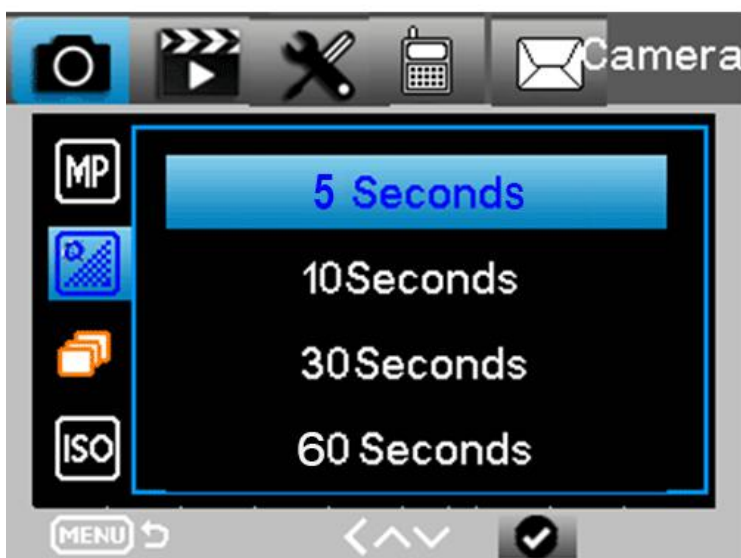
4.1.6 Sequence Shooting

Your camera can take 1/3/6/9 pictures, when the camera is activated in Camera or Camera + Video mode.



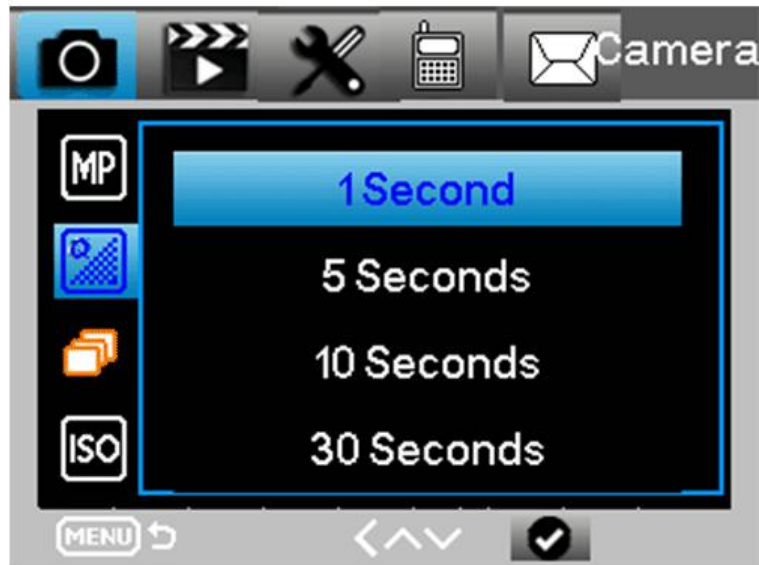
4.1.7 Video length

You can choose Video length 5s / 10s / 30S / 60S / 90s when video recording is activated. The longer the video length selected, the shorter the battery life.



4.1.8 Interval

You can choose 1s / 5s / 10s /30s / 1min / 5min / 10min / 30min, during the selected interval, your camera will not record any images or videos, which prevents the memory card from be filled up with too many pics / videos at same event and save your batteries life and memory capacity.



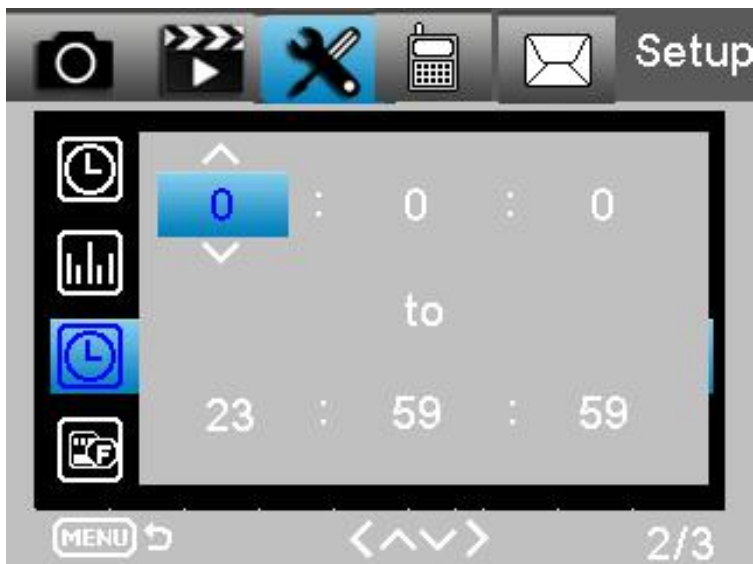
4.1.9 PIR Sensitivity



For interior areas and environments with little interference, such as branches blowing in the wind, select “Low”. Select “Medium” for exterior areas and environments with a normal amount of interference and select “High” for environments with a high level of interference.



4.1.10 Timer.

Select Timer if the camera only need to be active during a certain time period. In the sub-menu, you can set the start and end time for PIR mode and time lapse mode.



Press the key  /  to set the hour for the start of the active phase, then press the right button to the next field.

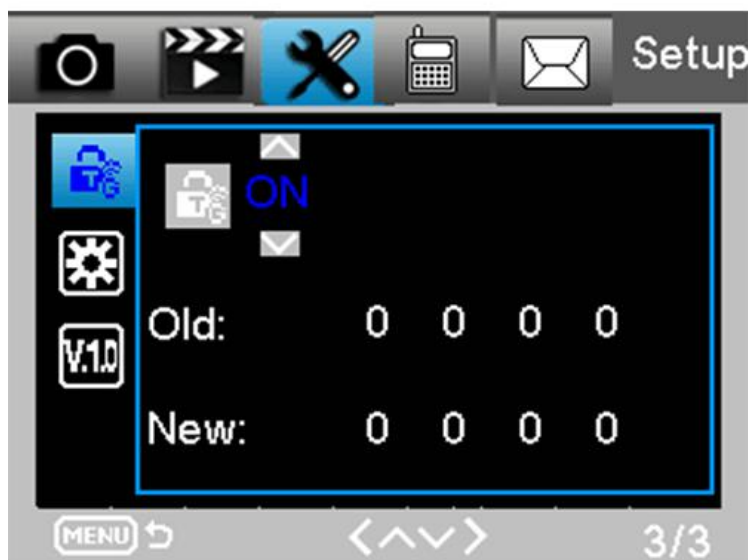
The setting applies every day and the camera will not record any images outside of the



active phase.



Press the key  to exit this sub-menu.

4.1.11 Password Setting

Select “On” if you want to use a password to protect the camera from unwanted access. In the following screen menu, you can set a 4-digit combination:



Press the  /  button to select the first digit between 0–9.

Then press the key  switch to the next field. Press the key  to save the

setting, press the key  to exit this sub-menu.

You can contact the supplier for help if you forget the password.

4.1.12 Time lapse Interval

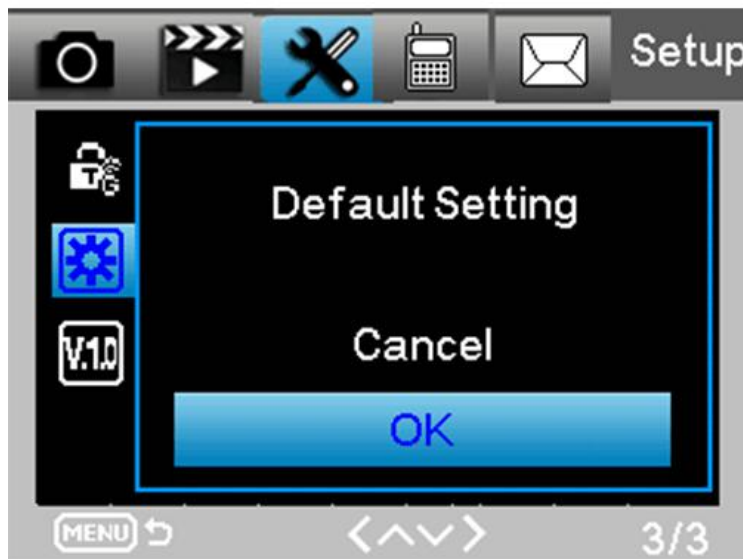
With this function the camera automatically takes pictures at adjustable intervals. This is


useful if you want to observe the blooming of plants.

Menu → Mode → Time lapse

Time-lapse interval → 30/60/240 minutes

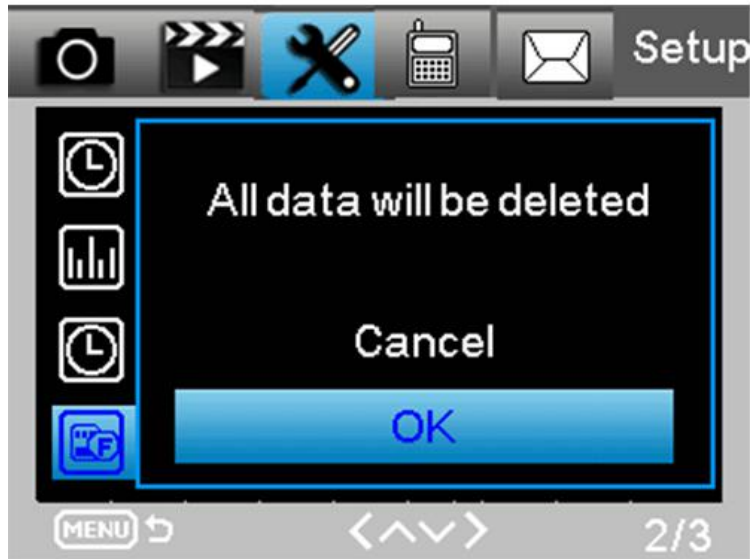
4.1.13 Default Settings




Select Default Setting, switch to “OK” and press the key  , camera will be factory setting and all previously settings including password will be deleted.

Note: the pictures and videos of memory card will not be deleted.

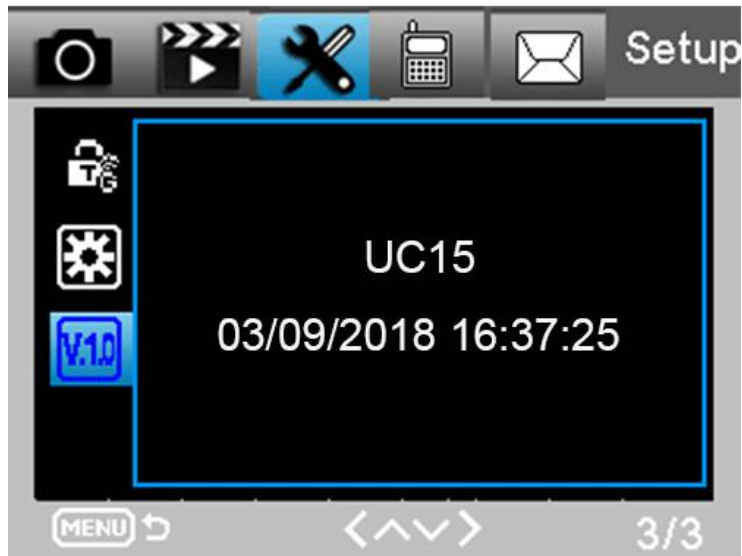
4.1.14 Format




When you use a new memory card or a card that has previously been used in other device, we suggest that you format the memory card. select “Format”, choose “SD card” and

press the key  The formatting process starts. When the card is being formatted, there will be a message “Please wait”.

4.1.15 Version



Select "Version" and press the key , there will be Software Version, which will help manufacturer to find the reason when your camera has problem.

4.2 Setup Camera On PC

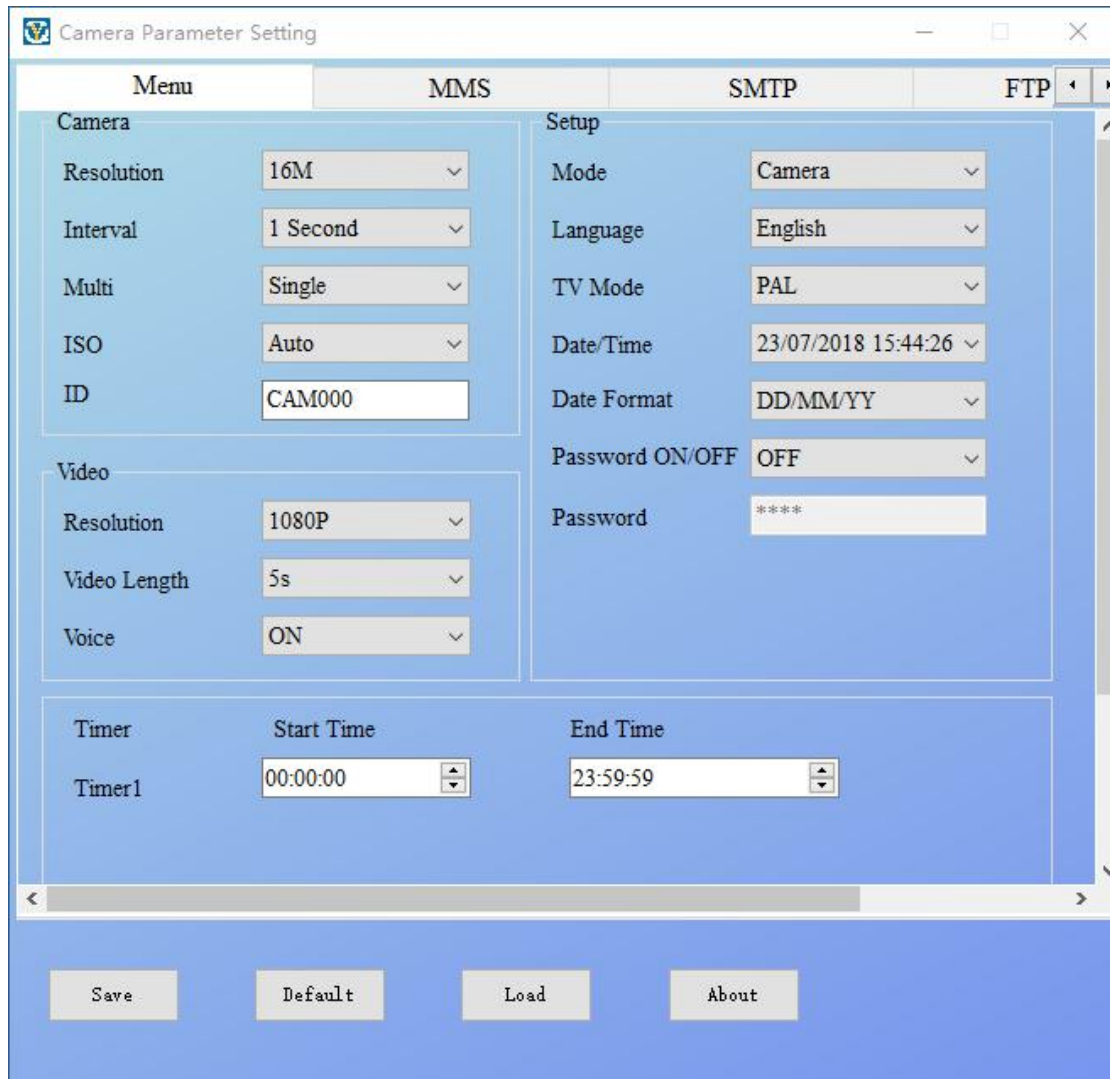
After format the memory card, retrieve the memory card and insert it into PC. The SD card reader is needed if your PC can't read SD card directly. Or you can connect the camera to PC via the USB cable to read memory card file.

Obtain the CD from the gift box and insert into PC, if your PC doesn't have CD drive, contact seller to get MMSCONFIG,

Below is the icon of the **MMSCONFIG** software:



Double click the **MMSCONFIG.exe** icon to enter Setup menu:



► **Menu**

Image Resolution: 16M/12M/8M.

Delay/Interval: 1/5/10/30 seconds, 1/5/10/30 Minutes

Multi-shot: 1/3/6/9

ISO: Auto/100/200/400

Camera ID: CAM000 or set your own camera name

Video: 1080P/720P/VGA

Video Length: 10/30/60/90 seconds

Voice: On/Off

Mode: Camera/Video/Camera &Video/Time-lapse

Language: English / French / German / Spanish / Russian / Portuguese / Italian / Dutch/
Italian / Polish / Danish /Swedish / Finnish

Motion Detection: High / Normal / Low

TV mode: PAL / NTSC

Date/Time: will automatic timing from computer system

Date Format: DD/MM/YY, MM/DD/YY, YY/MM/DD

Password: ON/OFF

The screenshot shows a web-based configuration interface for a camera, titled "Camera Parameter Setting". The "MMS" tab is selected, and the interface is divided into several sections for configuring MMS settings:

- Mms Setting:** Includes dropdown menus for "MMS ON/OFF" (set to OFF), "MMS MODE" (set to Auto), "Country" (set to Argentina), and "Operator" (set to Movistar). It also features a spinner for "Picture No./day" set to 99.
- Phone Setting:** Contains four text input fields labeled "Phone1", "Phone2", "Phone3", and "Phone4", all of which are currently empty.
- Gprs Setting:** Includes text input fields for "APN" (mms.gprs.unifon.com.a), "Account" (mms), and "Password" (mms).
- Server Setting:** Includes text input fields for "MMSC" (mms.movistar.com.ar), "IP" (200.68.32.239), and "Port" (8080).
- Email Setting:** Contains four text input fields labeled "Email1", "Email2", "Email3", and "Email4", all of which are currently empty.

At the bottom of the window, there are four buttons: "Save", "Default", "Load", and "About".

► **MMS**

MMS ON/OFF: OFF/ON

MMS Mode: Auto/Manual

ON **Auto** mode, we have preset some countries operators and its data such as APN, Server Setting, so you just need to choose your SIM card operator and fill your receiving phone number or E-mail.

Camera Parameter Setting

Menu MMS SMTP FTP

Mms Setting

MMS ON/OFF ON

MMS MODE Auto

Country Germany

Operator E-Plus

Picture No./day 99

Gprs Setting

APN mms.eplus.de

Account mms

Password eplus

Server Setting

MMSC http://mms/eplus

IP 212.23.97.153

Port 8080

Phone Setting

Phone1

Phone2

Phone3

Phone4

Email Setting

Email1

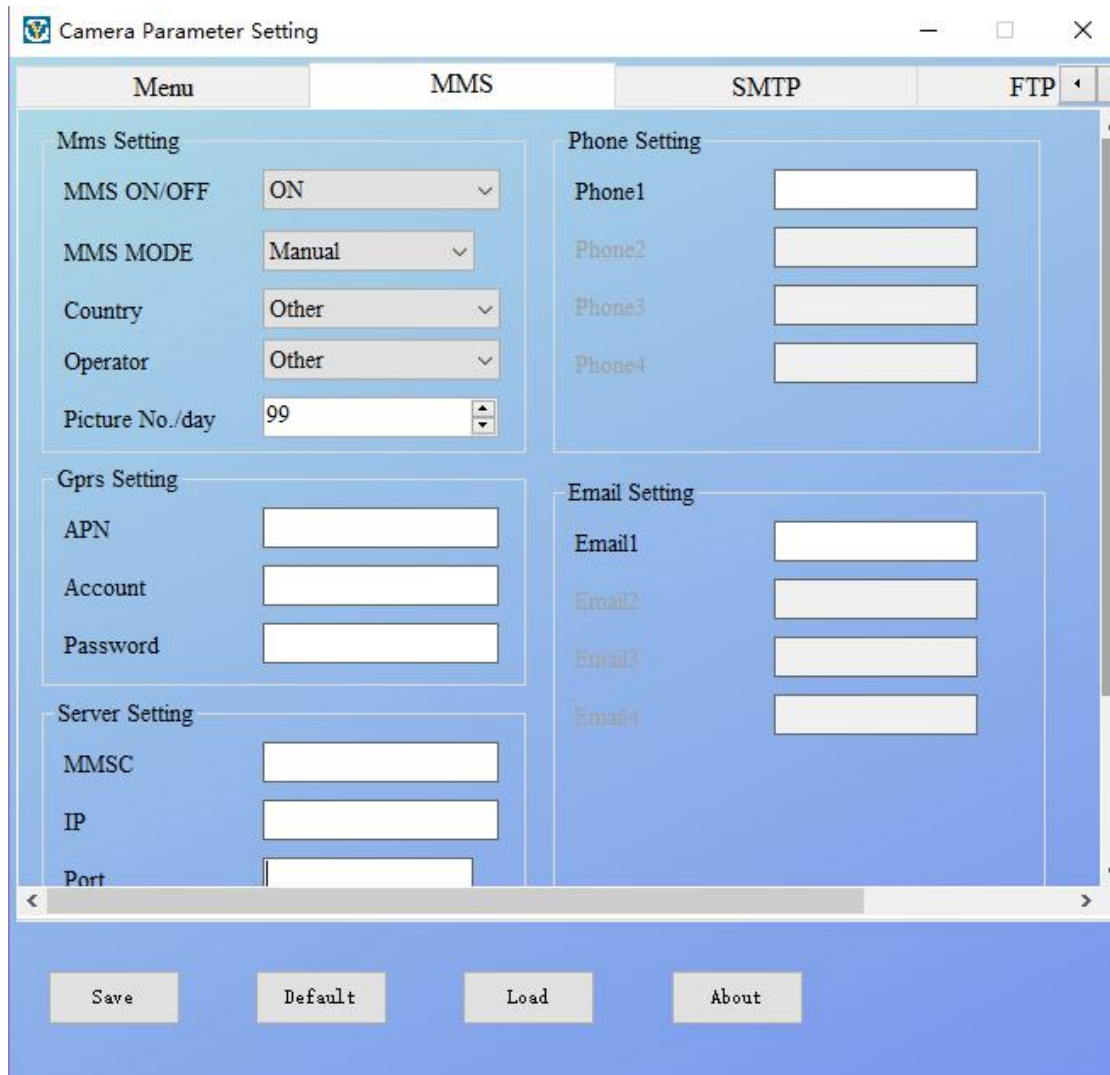
Email2

Email3

Email4

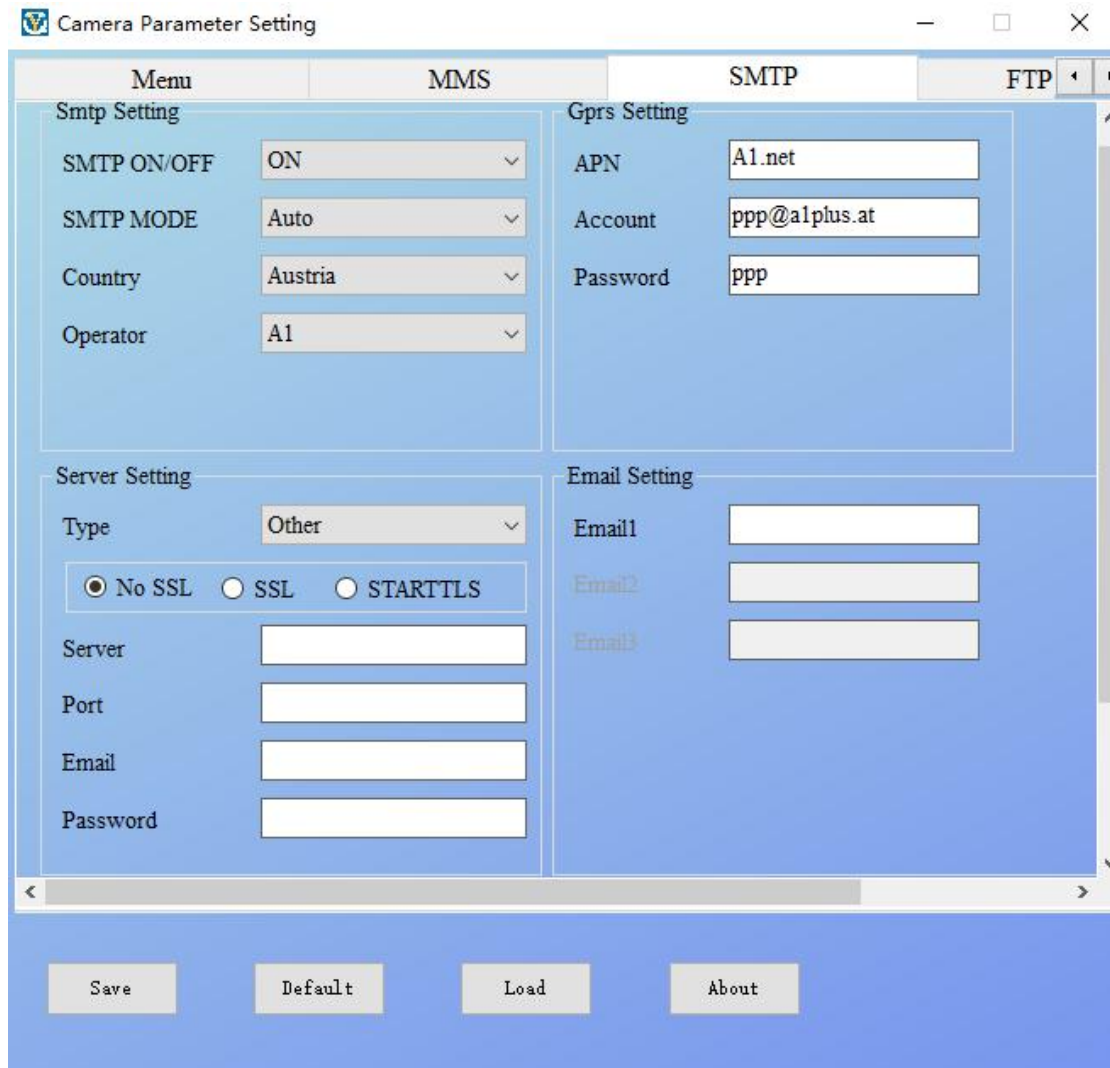
Save Default Load About

If your SIM card operator not in this list, you can choose MMS Mode: **Manual** contact your operator for APN / MMSC / account (Username & Password if required); and fill in the info manually.



Cautions:

- ▶ When you turn on MMS, camera will send photos to your phones/ E-mail. If MMS is with wrong information entered, then phones/ email accounts will not be able to receive photos from camera.
- ▶ Email box also can receive photos by MMS.
- ▶ It's not a must to enter User name and Password of APN, but some operators may require this password access to enable GPRS function, you may need to contact your local operator to confirm that.



► SMTP

SMTP sub-menu is similar with MMS sub-menu.

There are also 2 modes when you turn on SMTP sub-menu: **Auto / Manual**

On **Auto** mode, we have preset some countries info, you just need to choose your SIM card operator and fill your receiving E-mail.

You can choose **Manual** mode if your SIM card operator not included and fill in your SIM card operator info manually.

Cautions:

1. Please don't use email with dot between letters, for example john.smith@gmail.com, otherwise you may can't receive E-mail from camera.

2. On Manual mode, if you are not sure SIM card specifications, please contact your SIM card operator to get APN/ Server/ Port.

The screenshot shows the 'Camera Parameter Setting' application window with the 'FTP' tab selected. The window has a title bar with standard minimize, maximize, and close buttons. Below the title bar is a navigation bar with tabs for 'Menu', 'MMS', 'SMTP', and 'FTP'. The main content area is split into two panels: 'FTP Setting' on the left and 'Gprs Setting' on the right. The 'FTP Setting' panel contains a dropdown for 'FTP ON/OFF' set to 'ON', and text input fields for 'Server', 'Port' (containing '21'), 'Path' (containing '/myfolder/'), 'Account', and 'Password'. The 'Gprs Setting' panel contains dropdowns for 'Country' (set to 'China') and 'Operator' (set to 'China Mobile'), and text input fields for 'APN' (containing 'cmnet'), 'Account', and 'Password'. At the bottom of the window, there are four buttons: 'Save', 'Default', 'Load', and 'About'.

► FTP

Please fill in your FTP address, port, account and password, the original video or pictures will be upload to your server automatically.

Note: The GRRS data setting of FTP will Synchronize with SMTP data.

4.3 Camera to ON mode

When you finish all the configure, press “save” and save the parameter.dat to memory card. Then put the memory card back to camera card slot.

Switch to TEST mode, when camera display light up, you can check the configure by key panel, and switch to “ON “mode, after Red flash for 5 seconds, then the camera will start to work.

Cautions: camera display and control panel will be useless when camera at “ON” mode, you can switch back to “TEST” mode to review the configure.

5. SMS Command Code

This camera support SMS remote control, you can control your camera by sending SMS code in below:

Code	Function	Description
530	Enable the detection function	Start to work from sleeping mode
531	Disable the detection function	Stop to detect the movement of the PIR
500	Capture (MMS or SMTP)	Camera takes a picture, then send it to the configured phone number or E-mail of mmsconfig
505	Capture and get pic (only MMS mode)	Camera take a picture, then sends it to phone number which send this SMS code
520	Get Camera information	Camera send a text to phone or email with pictures quantity, memory card capacity, battery lever.

6. Trouble Shooting

6.1 Camera doesn't Capture Subject of Interest

1. Check the PIR sensitivity. For warm environmental conditions, set the Sensor Level to “Low” and for cold weather use, set the sensor for “High”.

2. Try to set your camera up in an area where no heat resources are in the camera's field of view.
3. In some cases, set the camera near to water will make the camera take images with no subject in them.
4. Try to aim the camera over ground.
5. Try to set camera on stable and immovable objects, i.e.: large trees.
6. At night, motion detector may detect beyond range of the IR illumination, reduce distance setting by adjusting sensor sensitivity.
7. Rising sun or sunset can trigger sensor. Camera should be reoriented.
8. If person/animal moves quickly, it may move out of the camera's field of view before photo is taken. Move camera further back or redirect camera.

6.2 Camera Stops Taking Images

1. Please make sure that the memory card has enough memory storage. If the card is full, camera will stop taking images.
2. Check batteries to make sure that alkaline, NIMH or lithium AA batteries left power is enough for camera to work.
3. Make sure that the camera power switch is at the "On" position and not at the "Off" or "Test" modes.
4. When MMS/SMTP function is on, there will be around 1minute interval for camera to send out photo before camera take the next photo.
5. Please format the memory card when you first time to use it or change to use another memory card.

6.3 Night Vision Flash Range Doesn't Meet Expectation

1. 4pcs AA batteries is not able to support camera night vision ability, please install 8 pcs AA batteries for better battery life.

2. make sure that batteries are fully charged or left power is enough.
3. High-quality 1.5V NIMH or Lithium rechargeable AA batteries can offer much better Infra flash range than alkaline batteries.
4. To ensure accuracy and quality of night image, please try to mount camera on dark environment without obvious light sources.
5. To ensure accuracy and quality of night time image, please mount camera to dark environment without any obvious light sources;
6. A certain surroundings (like trees, walls, ground, etc.) within flash range can get you better night time images; please do not aim camera to total open field where there is nothing within IR flash range to reflect flash back, it's like shinning a flashlight into sky in night, you just can't see anything, same does camera.

6.4 Camera Take Images but won't send them to mobile phone /E-mail

1. If you choose manual mode, the info you fill in may has problem, Contact SIM card carrier to confirm all the info such as Apn, server, port is correct.
2. When you turn on MMS function, it doesn't need to add international phone zone number before the phone number, just fill in your mobile phone number.
3. When you turn on SMTP function, please make sure that your email's server and port is correct, some email server will reject email as SPAM, you can try to find your email at SPAM box or contact seller to get test email and have a try.
4. Don't rename parameter.dat, you can check your phone number or E-mail by camera menu, please save parameter.dat at the boot of memory card, otherwise camera can't recognize the parameter.dat

7. Specifications

Image Sensor	5 Mega Pixels Color CMOS
Memory	Micro SD Card up to 32GB
Lens	F=3.1; FOV=120 °
Size	135mm * 90mm * 86 mm
TFT Display Screen	2.0 inch
LED	Black 940nm
PIR Distance	High/Normal/Low
PIR Sensor Sight Angle	120 Degrees
Number of IR LED	42LEDs
Max Night Vision Lighting Distance	65ft/20 meters
Trigger Speed	0.3second with 3 PIRs
Triggering Interval:	1/5/10/30sec/min (default 1 sec)
Selectable Image Resolution:	16MP/12MP/8MP
Multiple Photo on one detection	1/3/6/9
Video Resolution	1080P/720P/VGA
Full Size Photo Transmission	Yes
Video sending	Yes (5s-30s video send by SMTP/FTP)
Date Time Imprint	Yes
Time lapse	Yes
GPS Location	Longitude and Latitude stamped
Password Security	4 digital PIN codes
Frequency Bands	FDD-LTE: B1/B3/B5/B7/B8/B20 (Europe) FDD-LTE: B2/B4/B5/B12/B17(U.S.& Canada) WCDMA: B1/B5/B8 (Europe) CDMA: (B2/B4/B5(U.S.& Canada) GSM: 850/900/1800/1900
Remote Control	SMS
Video Transmission	5~30s to E-mail address
MMS to phone	1-3 phone number
MMS to E-mail	1-3 E-mail address
Stand-by current	0.1mA
Stand-by time	Max 6 Months (8X AA batteries)
Power Supply	4x or 8x AA batteries, external 6V/1A DC
Water proof	IP65
Security authentication	CE, FCC, RoHS

8. Packing Info



9. Warranty

With great pride and full confidence in products, we always keep our words which are given to our customers as specified warranty terms and services below. Based on a strict QC system, we initially offer all our customers **one-year long time limited warranty**. Our products are warranted against defects in materials and workmanship for a period of one year from the date of original purchase. If a defect exists, we will, at our option and to extent permitted by law will

- (1) repair the product at no charge using new or refurbished parts;
- (2) exchange the product with a functionally equivalent product that is new or refurbished.

This warranty excludes damage from abuse, accident, modifications or others that are not defects in materials and workmanship. This warranty only covers failures due to defects in materials or workmanship under normal usage. To obtain warranty service, please contact us to determine the nature of problem before return the product under this warranty (with a written description of the problem and print samples) for repairing or exchanging.