

User Manual

HT-001



1.Introduction.....	3
1.1 Application.....	3
1.2 Power Supply.....	3
1.3 Caution.....	3
1.4 Key Features.....	4
2.Whole View and Details of Camera.....	4
2.1 Front View of Camera.....	5
2.2 Back View of Camera.....	5
2.3 Bottom View of Camera.....	5
3. Operation.....	6
3.1 Load Battery.....	6
3.2 Insert TF Card.....	6
3.3 Remoter.....	6
3.4 Power On.....	7
3.4.1 Test.....	7
3.4.1.1 Menu Setting.....	10
3.4.2 ON.....	10
4.Firmware Upgrade.....	10
5.Specification.....	11
6. Packing List.....	11

1. Introduction

Thank you for choosing our hunting camera, we have full set copyright of HT-001 both in hardware and software.

Please read this introduction carefully before the camera using.

1.1 Application

- a. Instant surveillance camera for home, office, construction site, and warehouse, etc
- b. Animal observation and hunting;
- c. Plant observation

1.2 Power Supply

a. AA Alkaline batteries

4 X AA batteries.

Please note that the voltage of rechargeable AA batteries (1.2V) is insufficient to power this device.

b. Solar Panel

Original 6V lithium battery solar panels for optional.

c. Power Adapter

This camera can also be powered by an external 6V DC adapter.

1.3 Caution

- a. Please insert the TF-card when the camera Power off.
- b. Please do not insert or take out the TF-card when the camera Power On.
- c. Recommended to format the TF-card by the camera when used at the first time.
- d. The camera will be in USB mode when connected to a USB port of a computer. In this case, the TF-card functions as a removable disk.
- e. Please ensure sufficient power when having firmware upgrade, otherwise the upgrade process could be interrupted incorrectly. If any fault occurs after improper upgrading process, the camera may stop function properly.

1.4 Key Features

1	30pcs IR LEDs for flash range as 20 meters
2	12MP/8MP/5 MP resolution optional
3	Color pictures during daylight; black and white at night
4	trigger time:1.1s
5	Multi-shot pictures; 1,3,6,9
6	1/5/10/30 seconds/minutes Interval between motions optional
7	video length: 10/30/60/90 seconds optional
8	With 4 AA alkaline batteries, the longest standby time is up to 3 months
9	operation temperature: -10°C to 60°C
10	With specified Timer, camera can be programmed to work only during preset time period every day
11	Stamp the date, time, temperature on each picture
12	Sound Recording

2. Whole View and Details of Camera

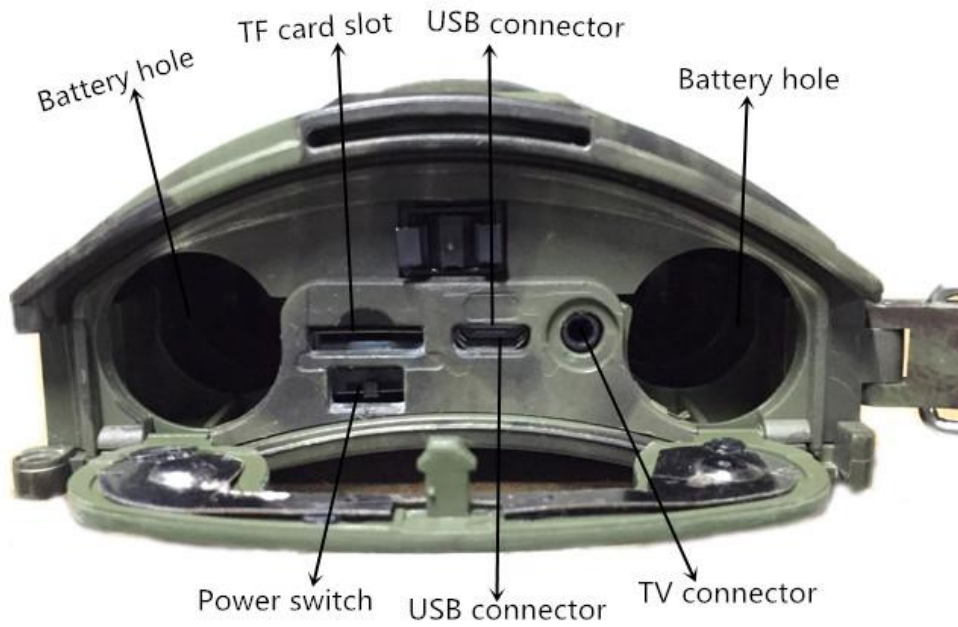
2.1 Front View of Camera



2.2 Back View of Camera



2.3 Bottom View of Camera



3. Operation

3.1 Load Battery



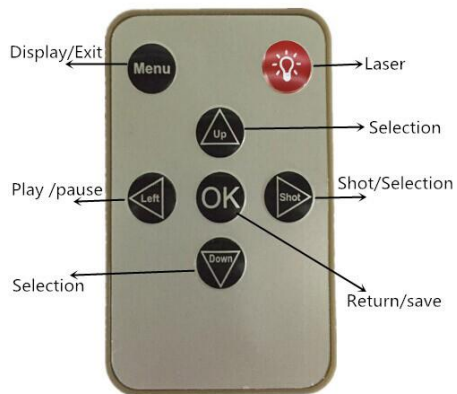
4 X AA Batteries

3.2 Insert TF Card (8MB~32GB)



3.3 Remoter

The infrared remote is an input device of the camera and primarily used for customer settings. Its maximum remote distance is 9 meters.



Press the punctuation “” for laser light.

Note (Under TEST mode):

1. Press “Shot” directly, the camera will take picture or video directly.
2. Press “OK” directly; the picture or video recorded can be viewed.
3. Viewing picture, press “Up” or “Down”.
4. Viewing video, press “Left” to start, again to stop, press “OK” to return.

3.4 Power on

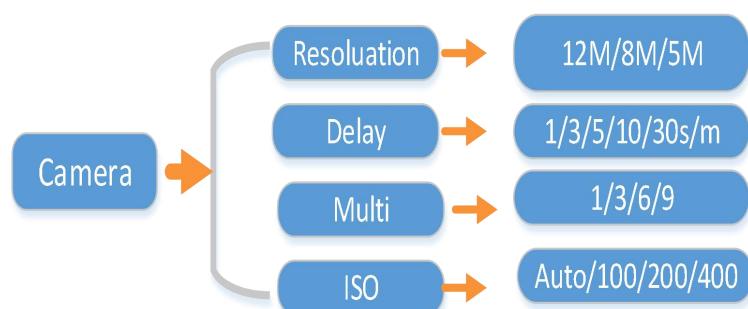


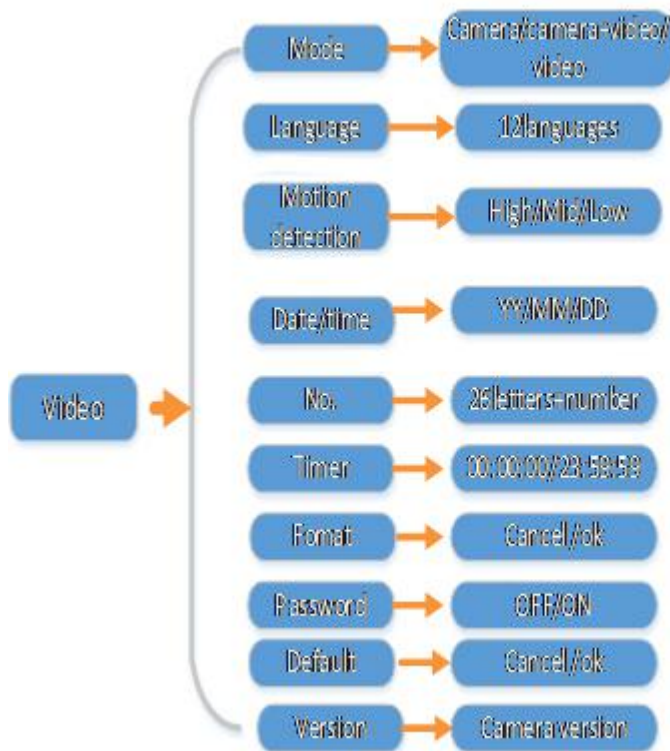
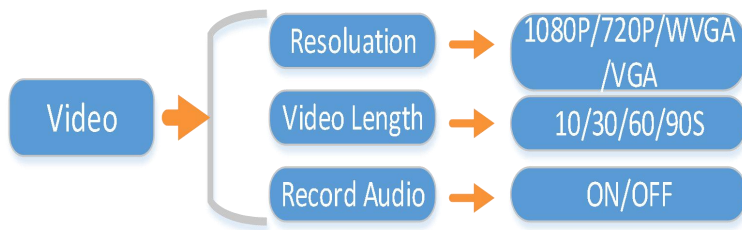
Slide Power Switch from OFF to Test (for setting) then to ON position, the camera powers on. (Please don't slide the power switch from OFF to ON directly)

3.4.1 TEST

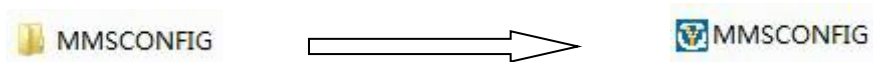
In TEST mode, there are two ways to set the menu:

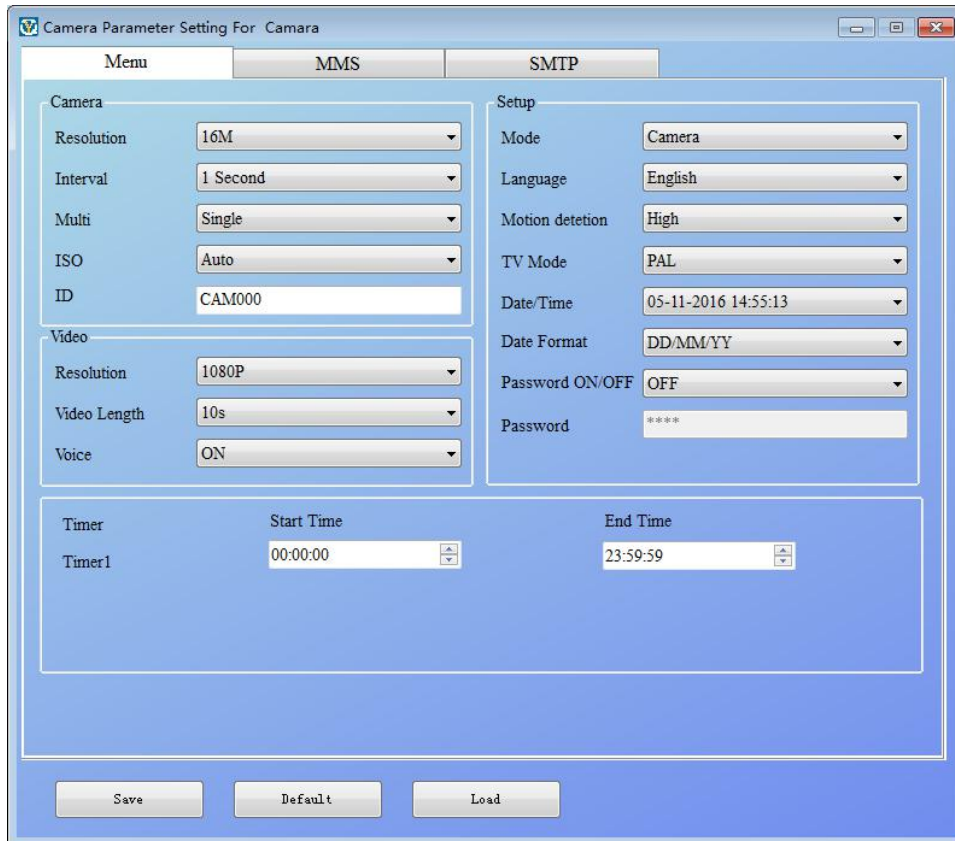
- 1). Connect the camera with TV via TV cables to set the menu by remoter.
 - a. Setting Camera Menu, Working mode includes Camera, Video and System setting
 - b. Take picture or video (press Shot)
 - c. View picture or video (Press Right)





2) Set via MMSCONFIG software in CD

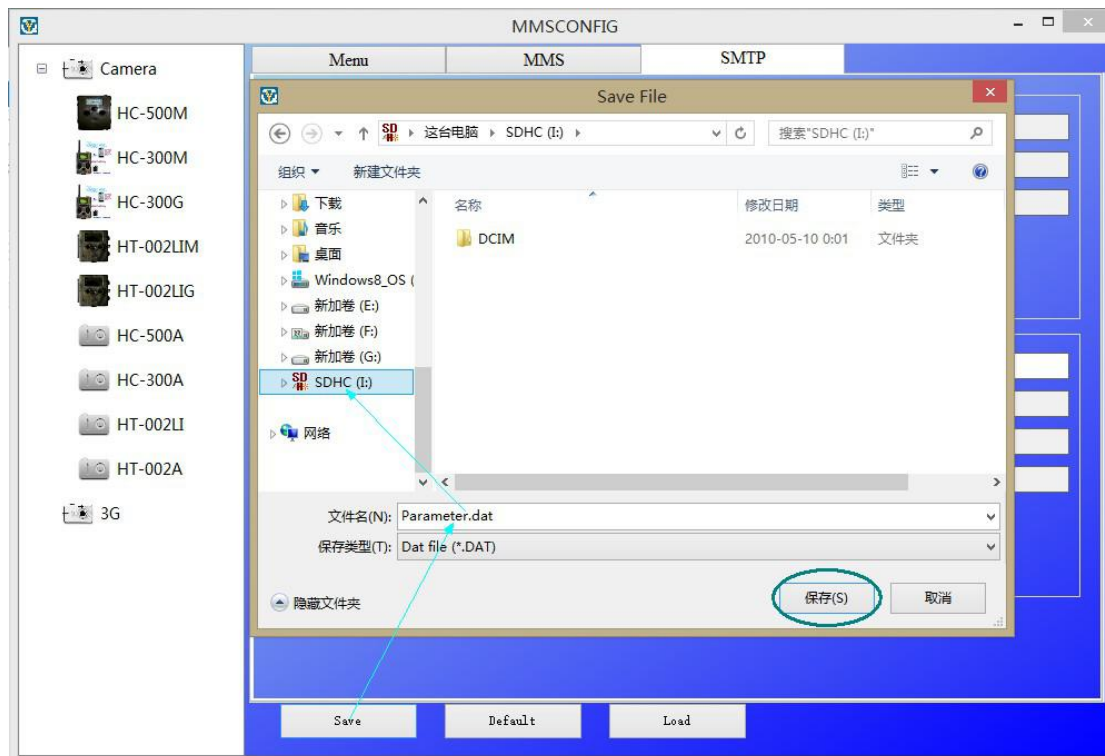




- a. After you inserted the TF to camera, connect with the computer by USB cable, and then the camera will be a removable disk.

- b. Open the MMSCONGIF software, you can change the Language, Working mode (Camera/Camera&Video/Video), resolution(12/8/5MP/1080P/720P/VGA), Multi(1/3/6/9), Camera ID (26alphabet +number), Date/time, Timer etc. in it.

- c. After you done the menu setting, please click “save”, then there is a file named ”parameter.dat” produced, please save this file to TF card . (**Don't rename**)



3.4.2 ON

In this mode, remoter is useless. The camera works automatically. Will capture if detected any motions by PIR.

4. Firmware Upgrade

This camera is equipped with an automatic upgrade function for you. Upgrading is needed only when an improved firmware is available. The operations are as following:

1. Unzip the update file
2. Copy the FWR801.bin to TF card.
3. Insert the TF card into the camera.
4. Power on the camera (Test Mode) .
5. The camera will read it and update itself automatically. When updating the camera, its screen is black and the indicator light will flash approx 10s.
6. It will come to the menu surface after upgrade successfully.
7. Delete the firmware from the TF card.(If you don't do this, the camera will upgrade every time when power on).
8. Insert the TF card into the camera for its working.

5. Specification

Image Sensor	3 Mega Pixels Color CMOS
Memory	TF Card to 32GB
Lens	F=3.1; FOV=90 °
Size	129mmx93mmx39mm
LED	Black Invisible 940nm
Motion Detection	High/Normal/Low
PIR Sensor Sight Angle	90 Degrees
Number of IR LED	30LEDs
Max Night Vision Lighting Distance	65ft/20 meters
Trigger Speed	1.1 second
Delay	1/5/10/30sec/min (default 1 sec)
Selectable Image Resolution:	12MP/8MP/5MP
Multiple Photo on one detection	1/3/6/9
Video Resolution	1080P/720P/VGA
File Format	JPEG/AVI
Date Time Imprint	Yes
Password Security	4 digital PIN code
Stand-by current	0.2mA
Stand-by time	3Months
Power Supply	4×AA battery
Water proof	IP54
Security authentication	FCC, CE, RoHS ,Reach ,RTTE

6. Packing List

